

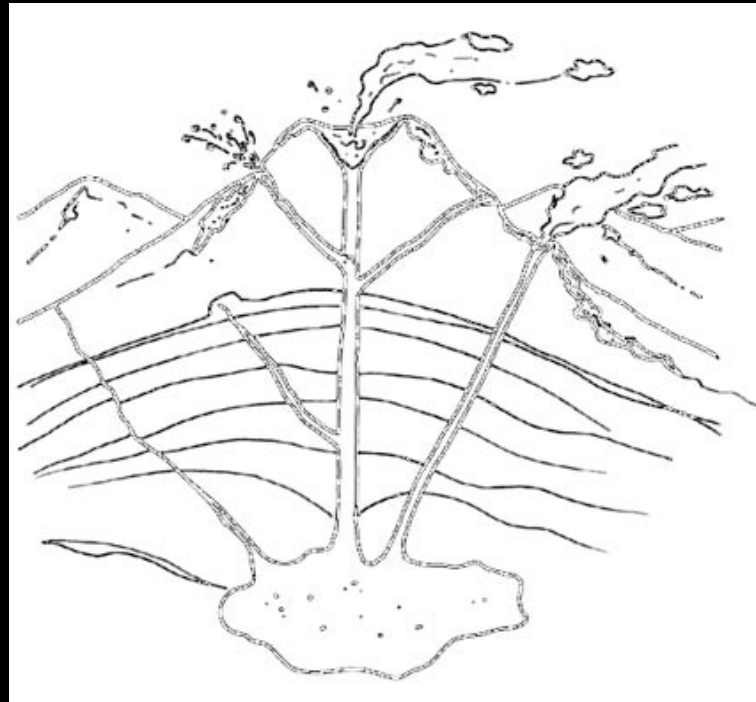
S. Dalì, *Nude from the back*

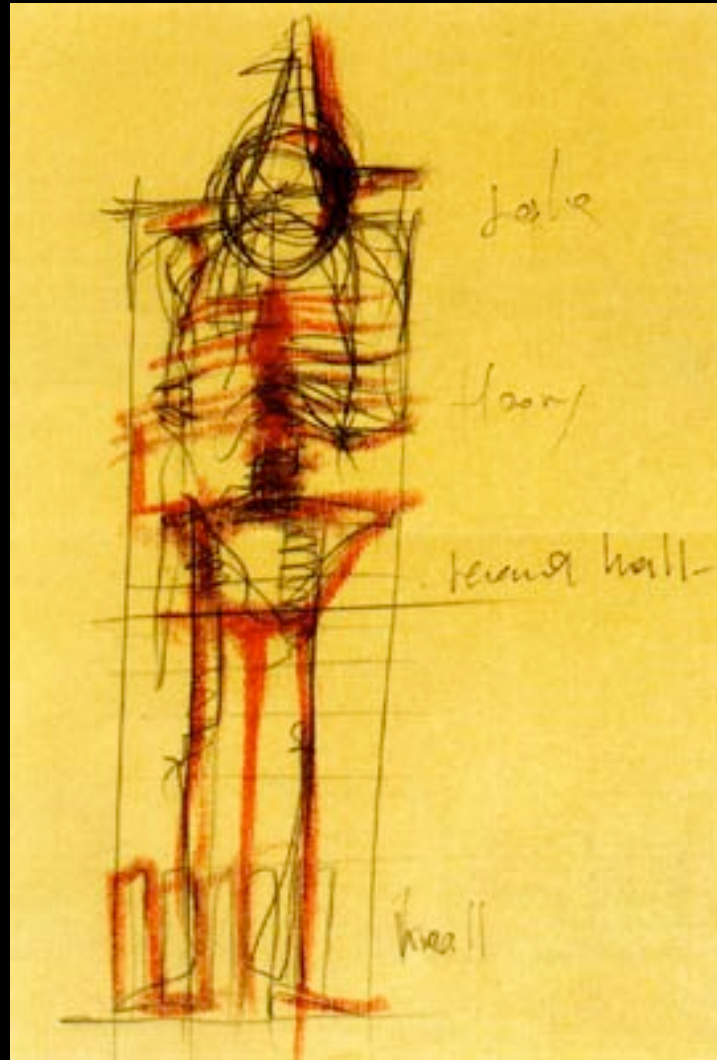
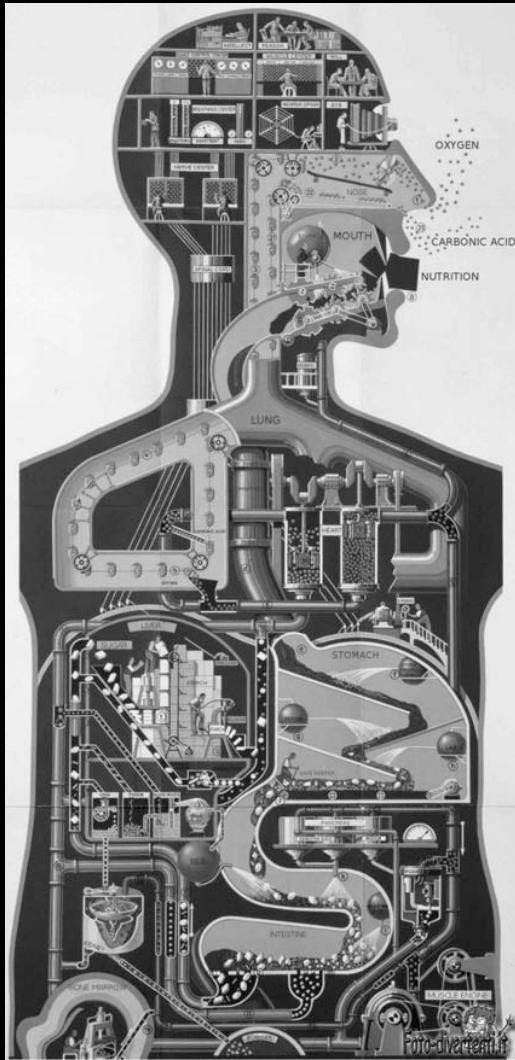


La sezione

Università *Mediterranea* di Reggio Calabria _ Facoltà di Architettura _ Corso di Progettazione 1c – prof. arch. rita simone

*sezione
come
interna*





Aldo Rossi, 1994,
Torre per Uffici, Città del Messico



Amaldo Pomodoro, Sfera





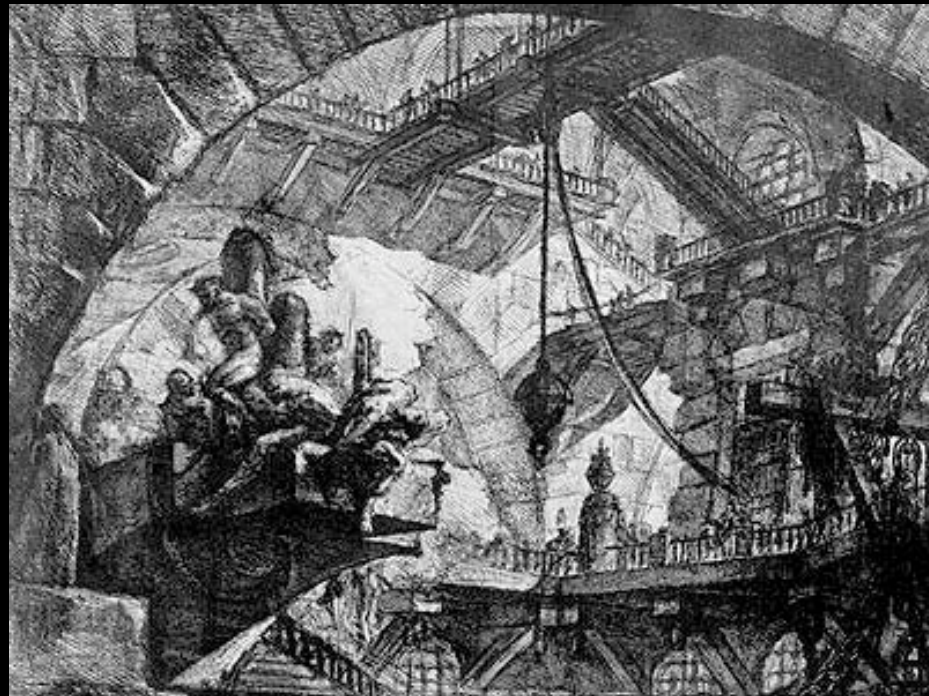
Arnaldo Pomodoro, 1973, Urbino, Cimitero



*sezionare volumi:
la rappresentazione
dell'interno*

Wim Wenders, 1987, Il cielo sopra Berlino

G. B. Piranesi, 1745-50, Carceri





Dolls House



*J. Soane, 1823-24,
progetto per la propria casa*





Aldo Rossi, 1986, Triennale di Milano, Teatro domestico

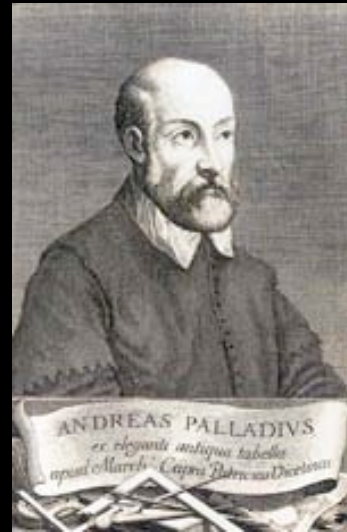


*Aldo Rossi e Ignazio Gardella,
1983, Genova, Teatro Carlo Felice*



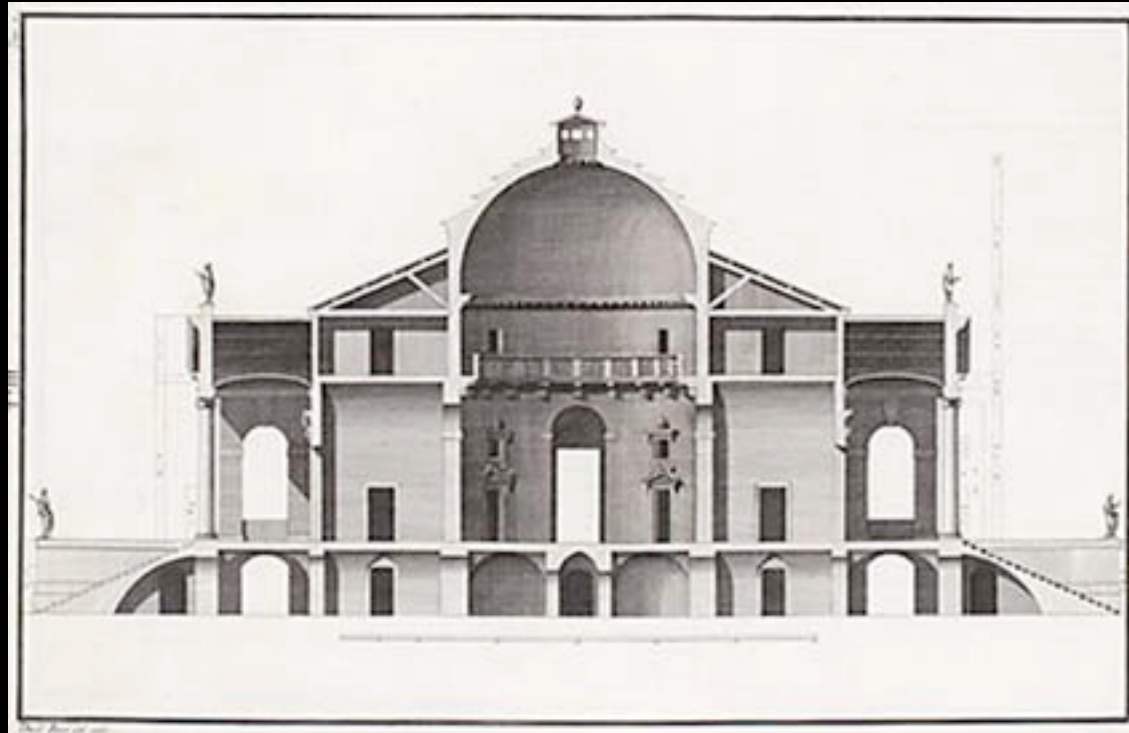


Grafton Architects

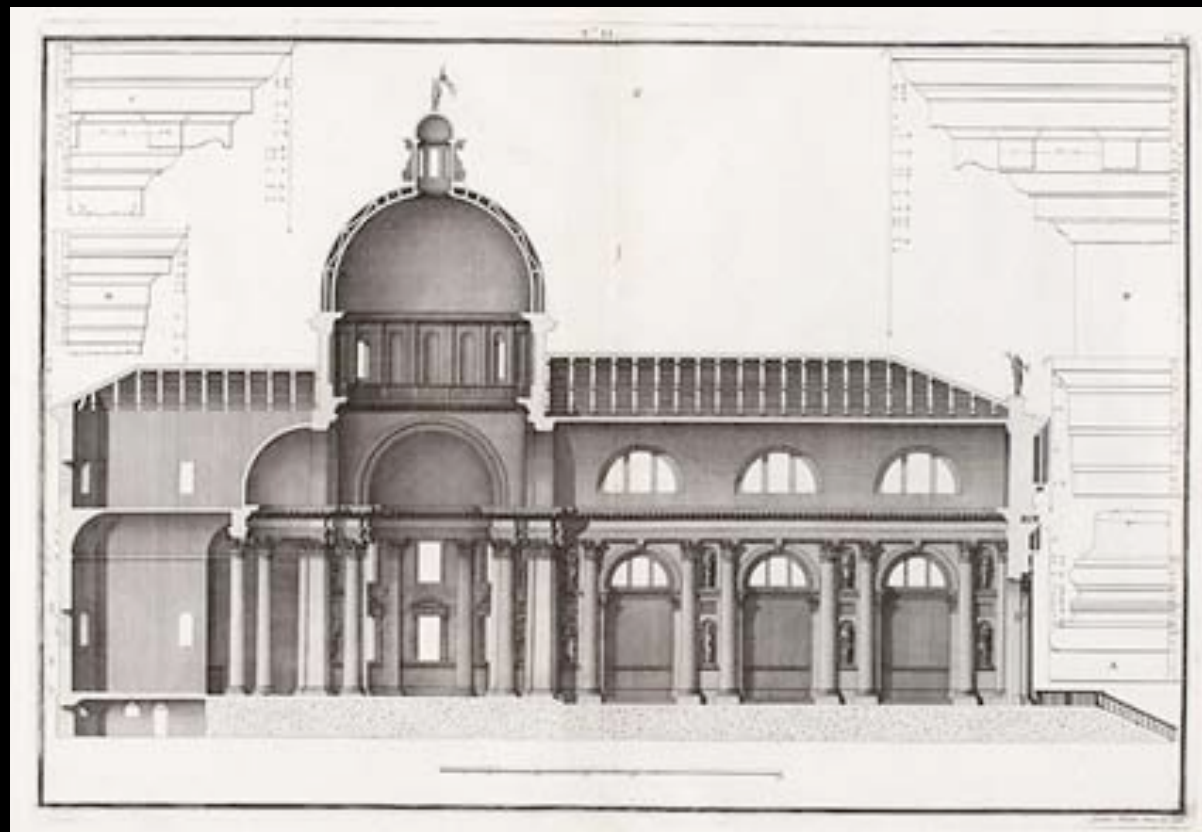
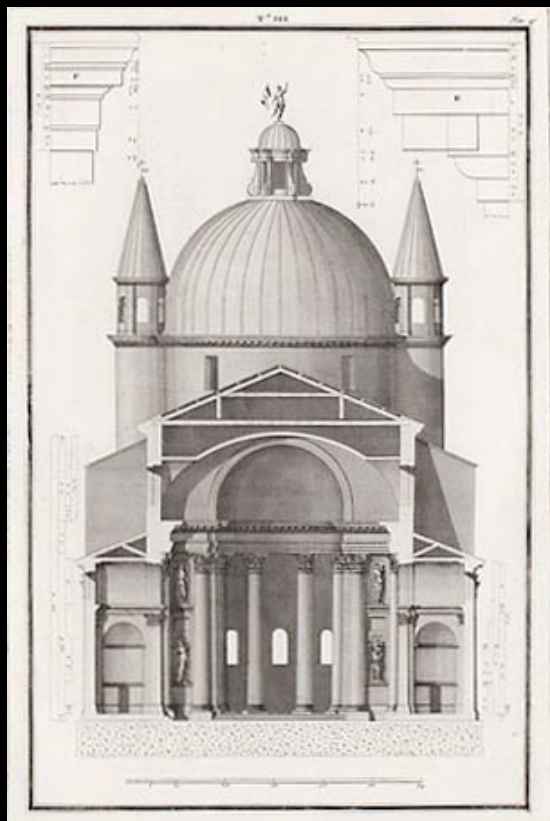


*sezionare
per
descrivere*

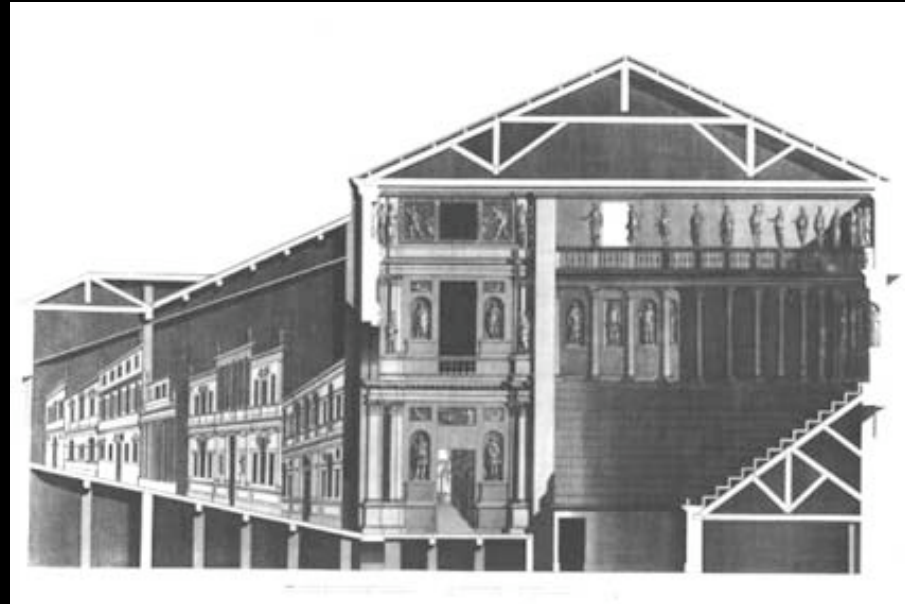




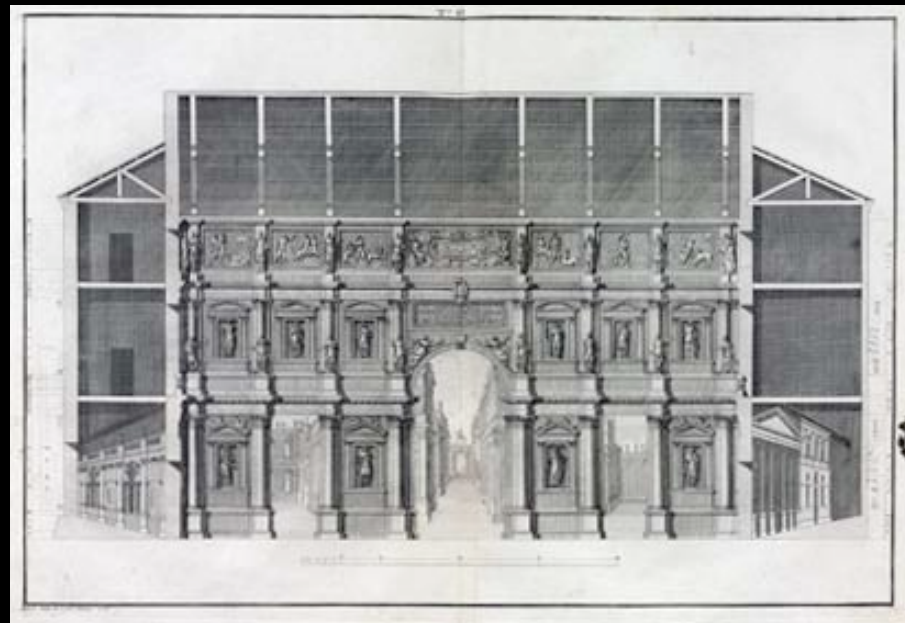
Scamozzi, 1778, Sezione della Rotonda

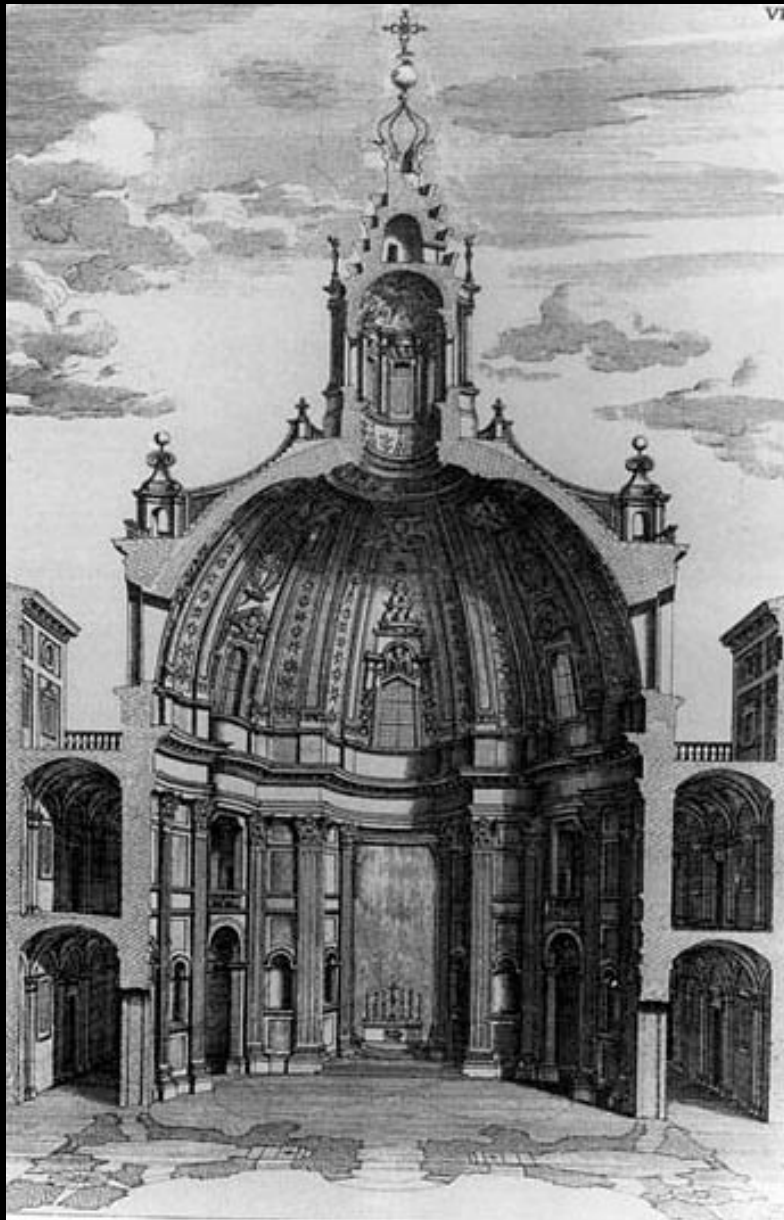


Scamozzi, 1783, Venezia, Chiesa del Redentore (A. Palladio)



Scamozzi, 1776, Teatro Olimpico

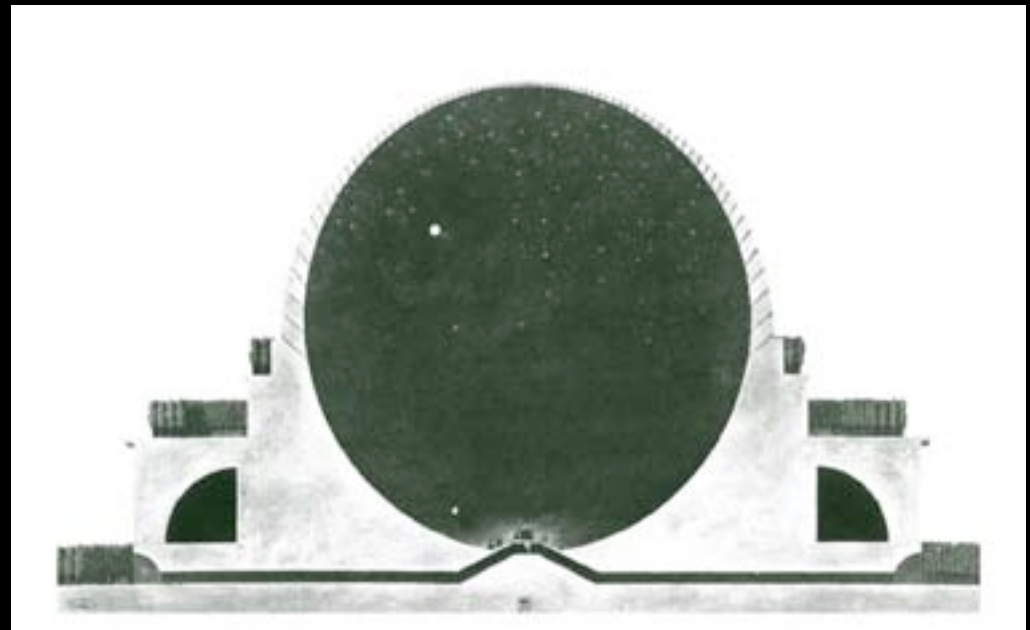
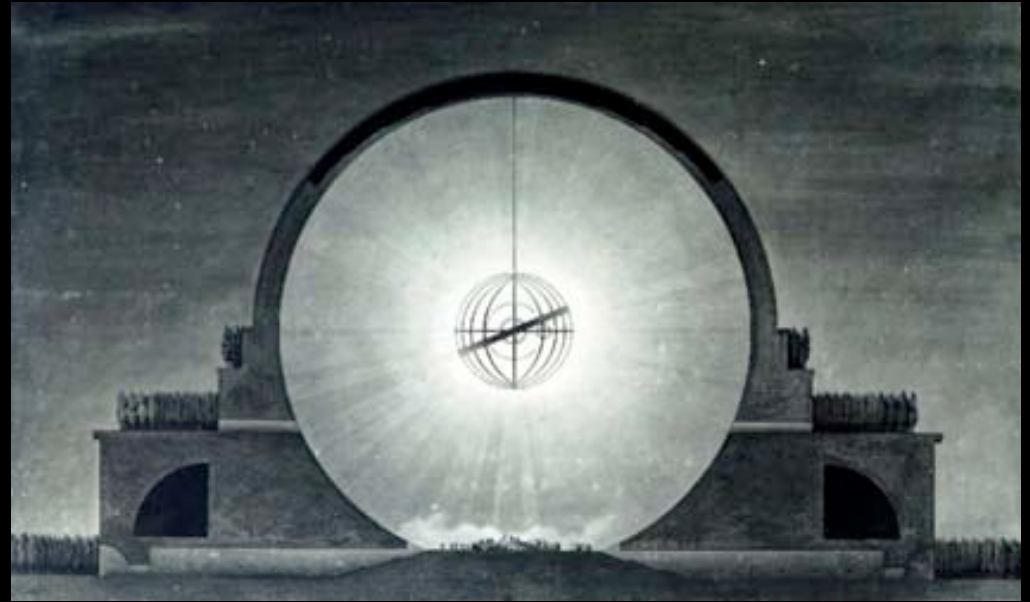




Borromini, Sant'Ivo alla Sapienza



C. Tyrel, Illustrazione di una lezione di J. Soane

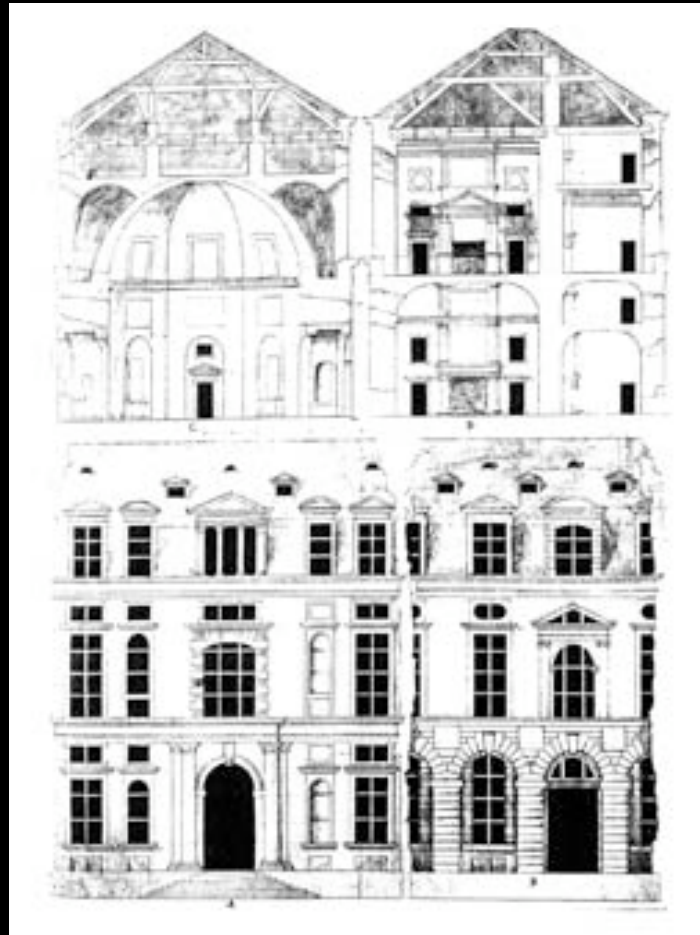
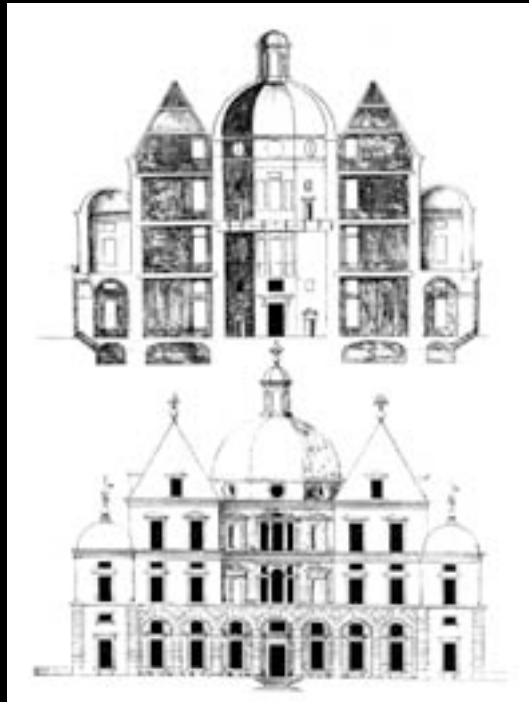


Etienne Louis Boullè, 1784, Cenotafio di Newton

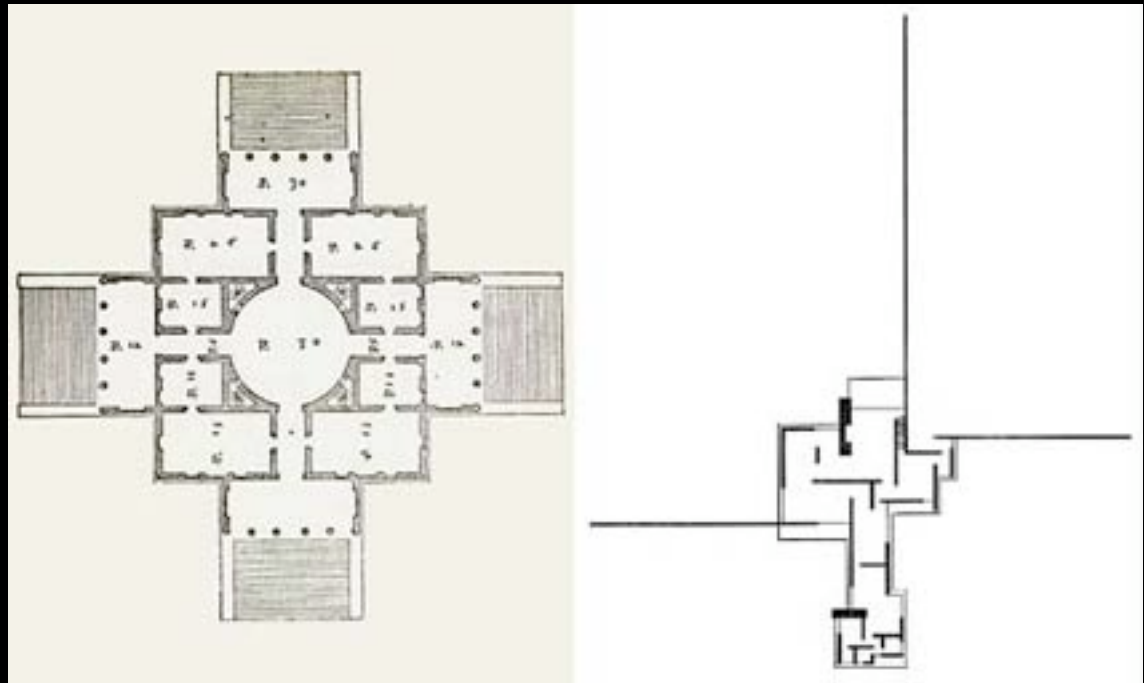


*Sezione
e
Costruzione*



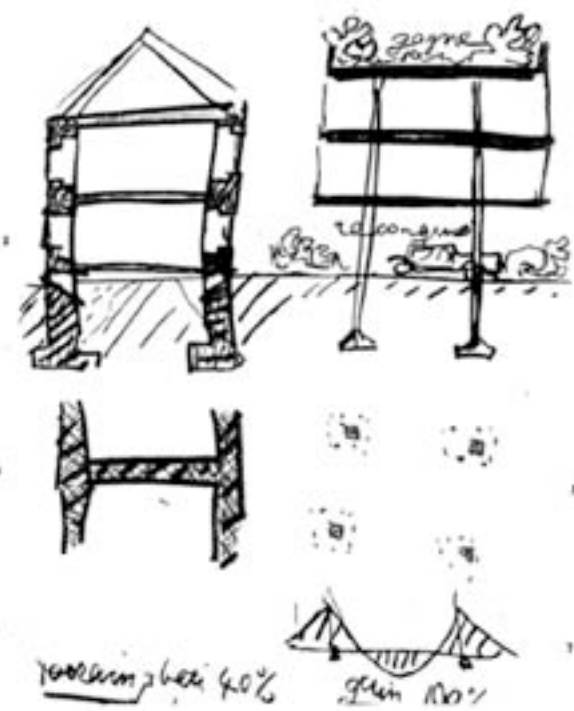


Sebastiano Serlio, 1537, Regole generali di architettura



Palladio / Mies

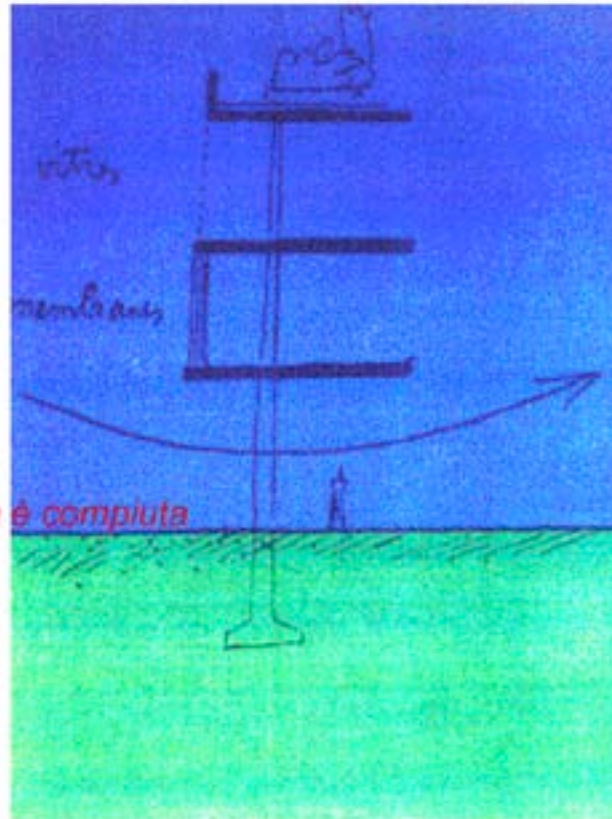
La sezione



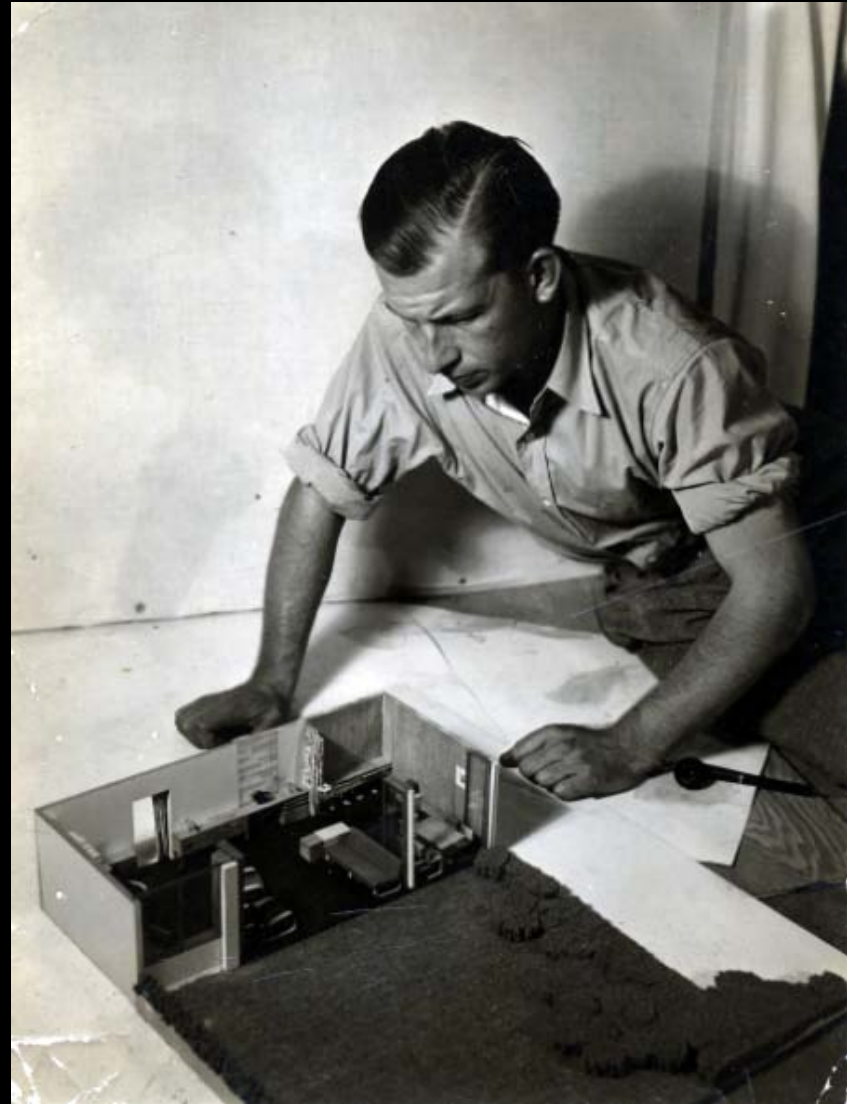
Le Corbusier

La rivoluzione architettonica è compiuta

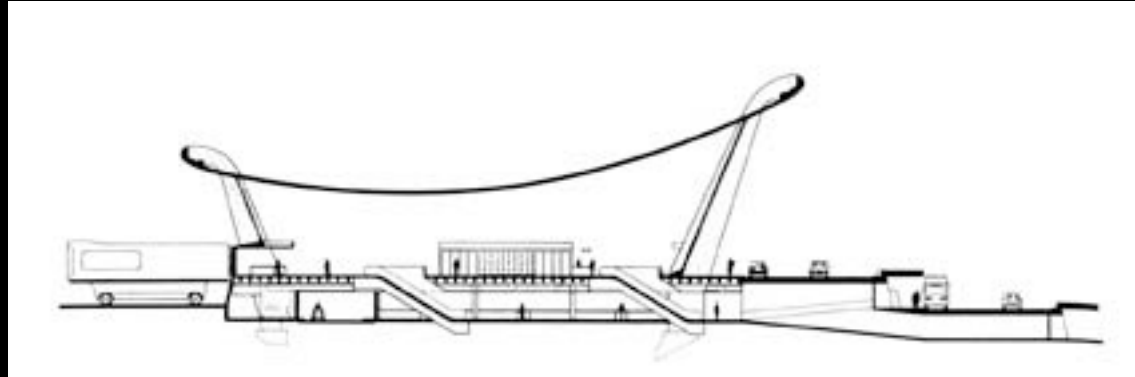
Le Corbusier, schizzo della
sezione tipo della "nuova architettura"



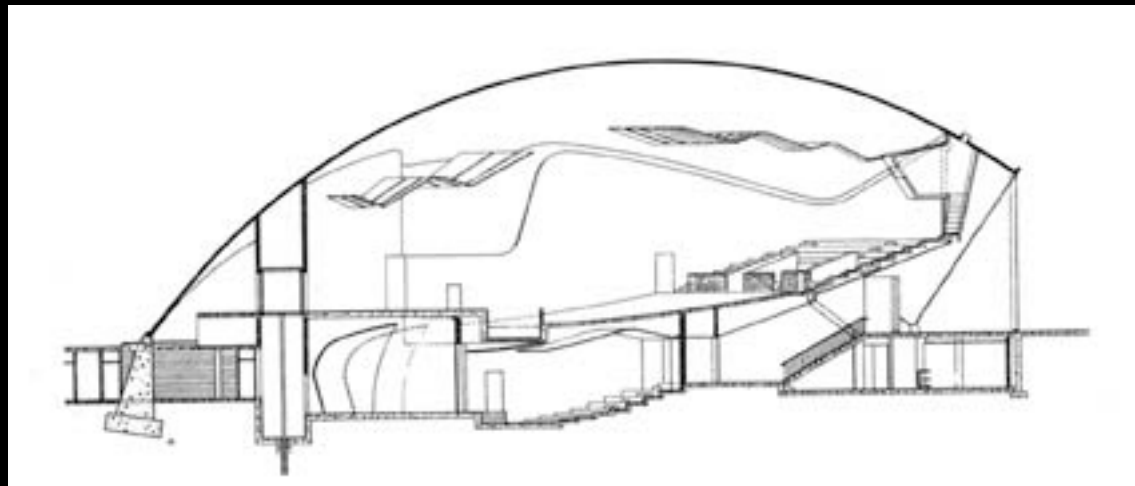
*la
Liberalizzazione
della
Sezione*



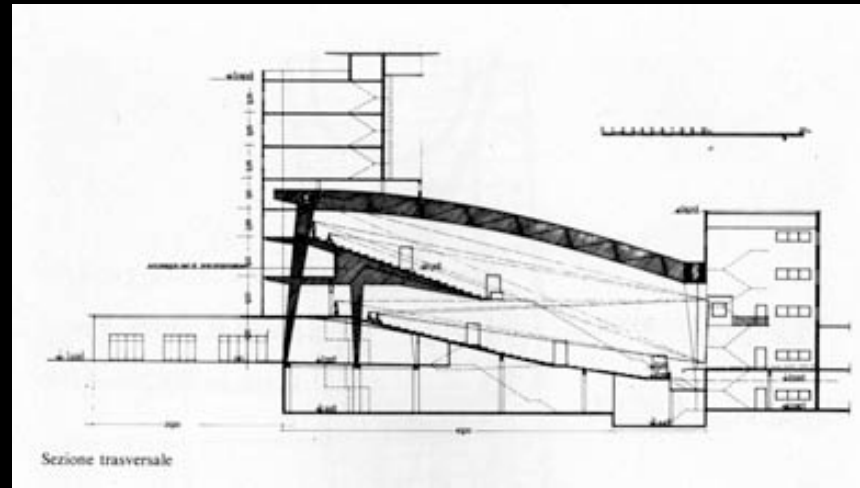
Eero Saarinen



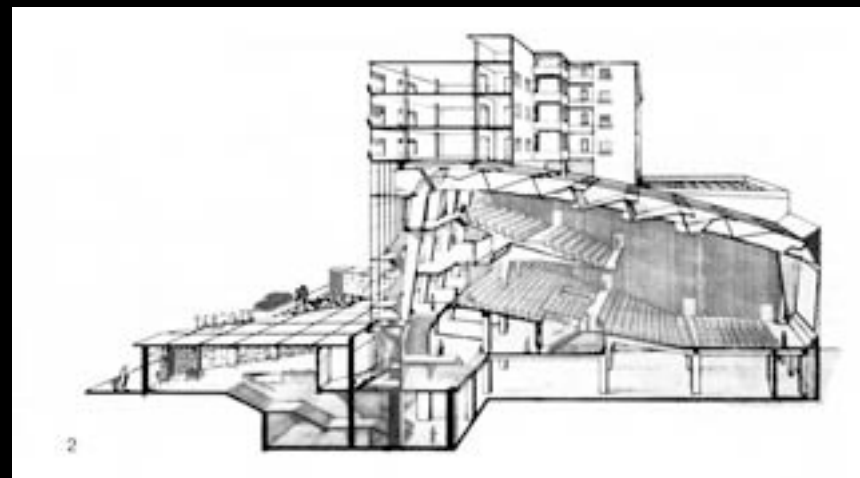
E. Saarinen, 1958/62, Dulles International Airport

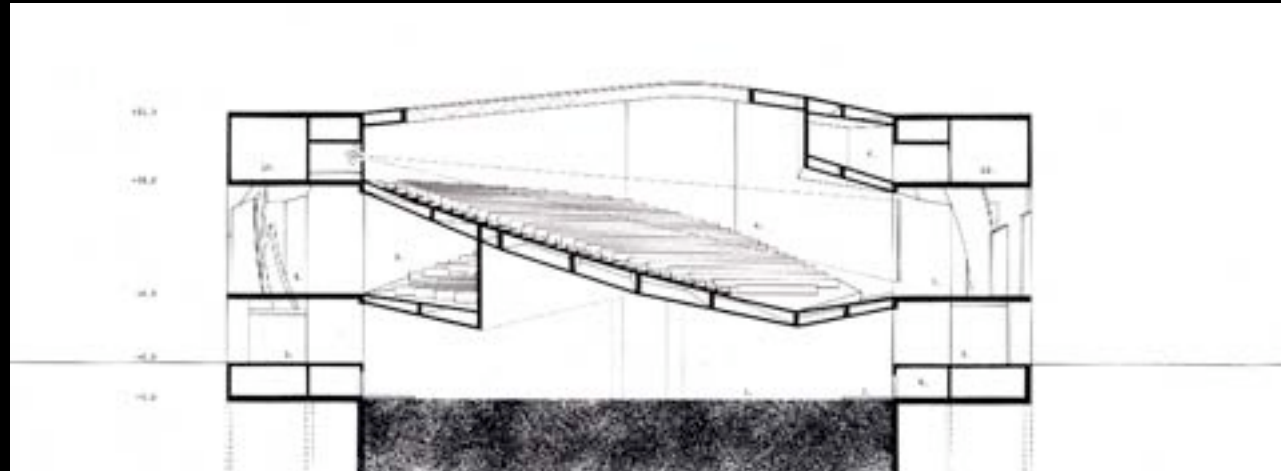


E. Saarinen, 1950/'55, MIT, Kresge Auditorium

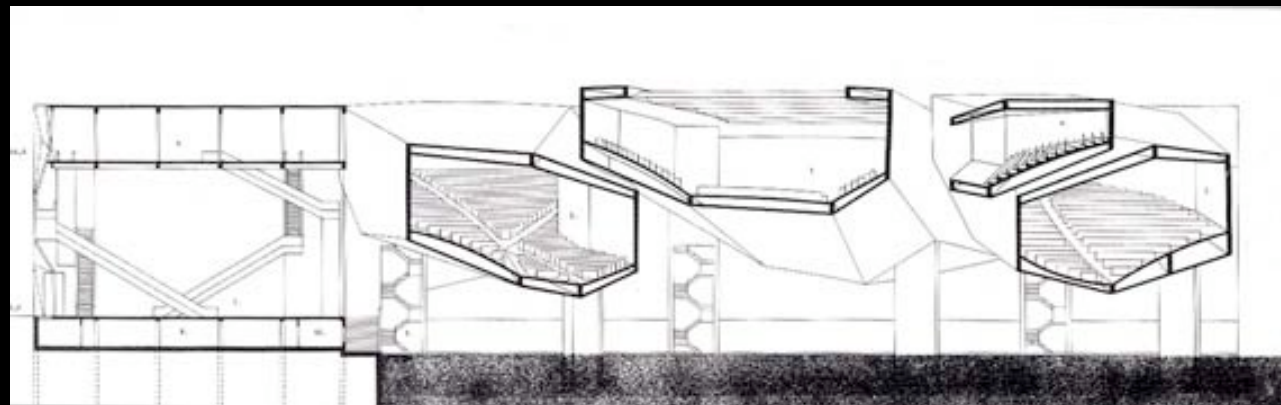


Riccardo Morandi, Cinema Maestoso



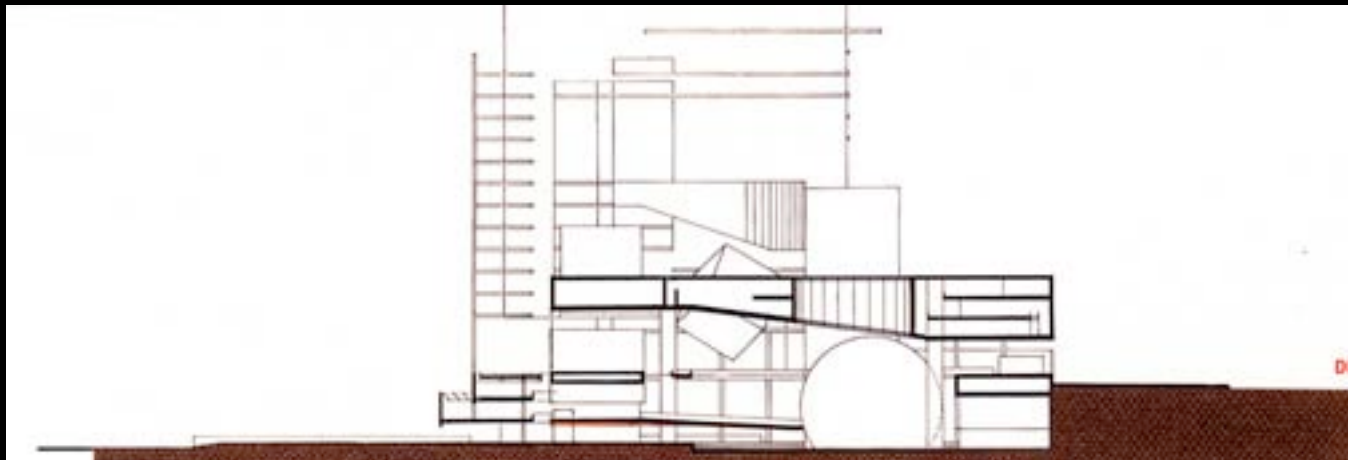


Steven Holl, Venezia, Concorso per il palazzo del cinema

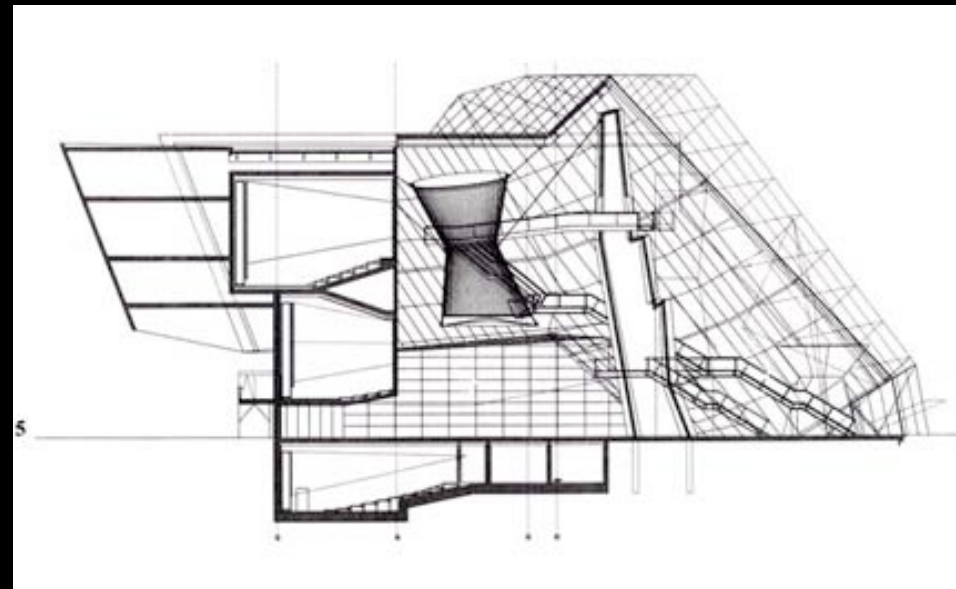
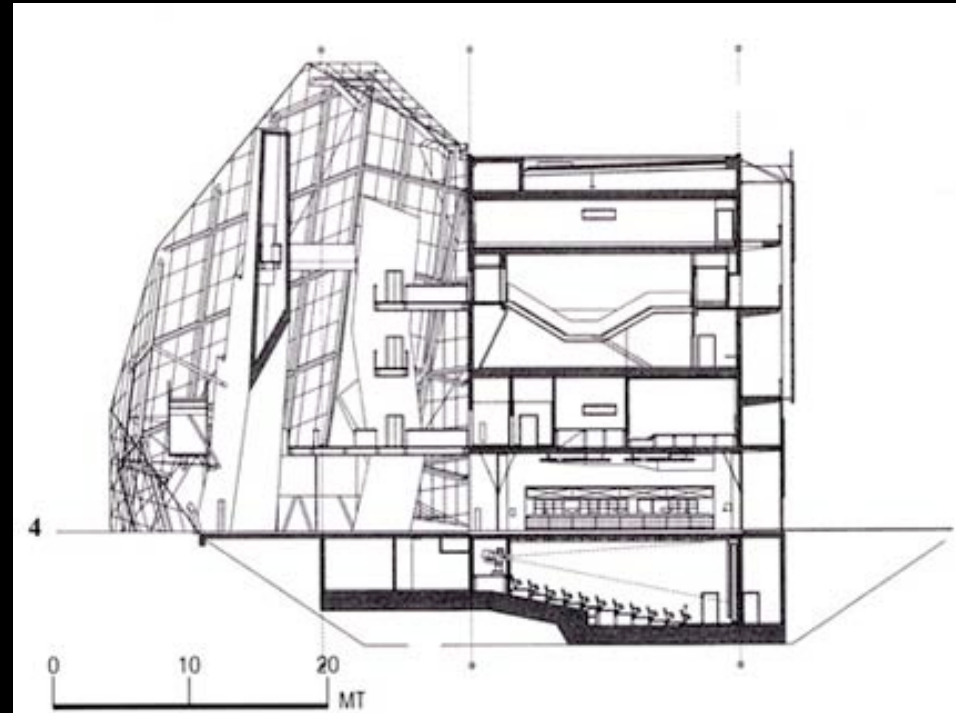




Chauvet e Vollenweider, Marsiglia, Centro Arti Cinematografiche



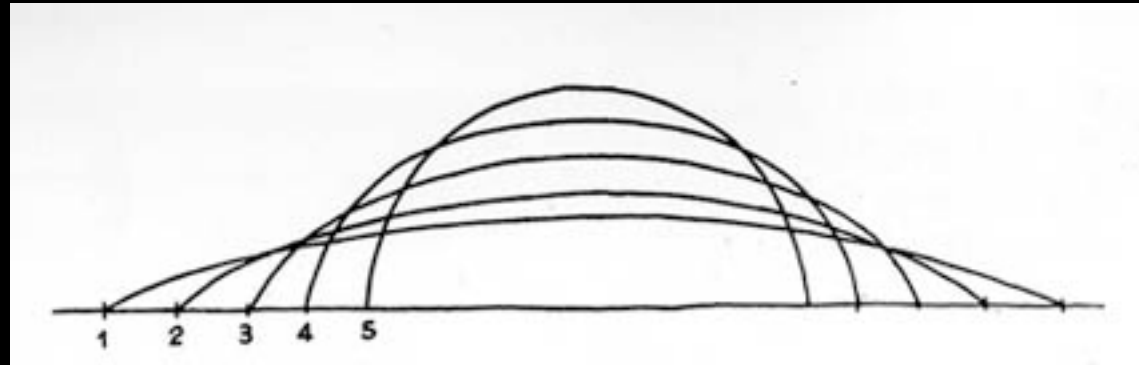
*Coop Himmelblai, Dresda,
Cinema Multisala Ufa*



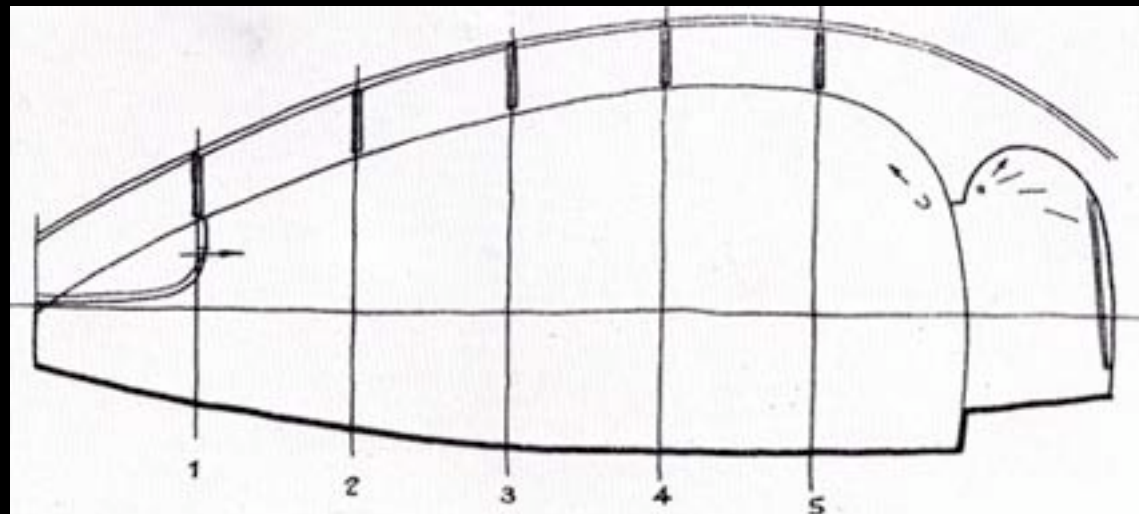
*Pensare
in
Sezione*

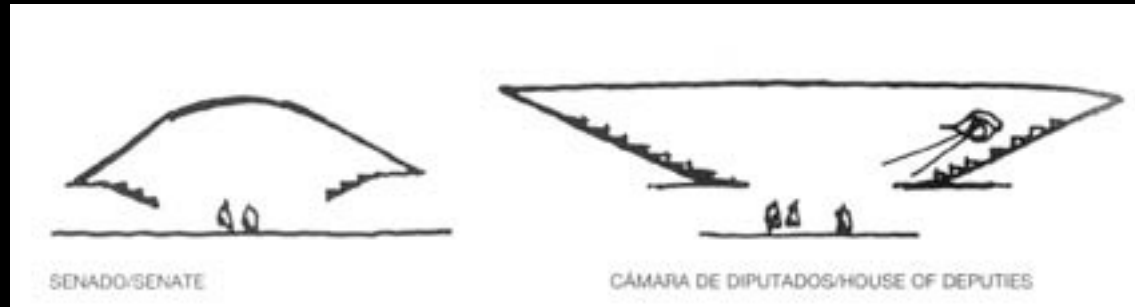


Adalberto Libera

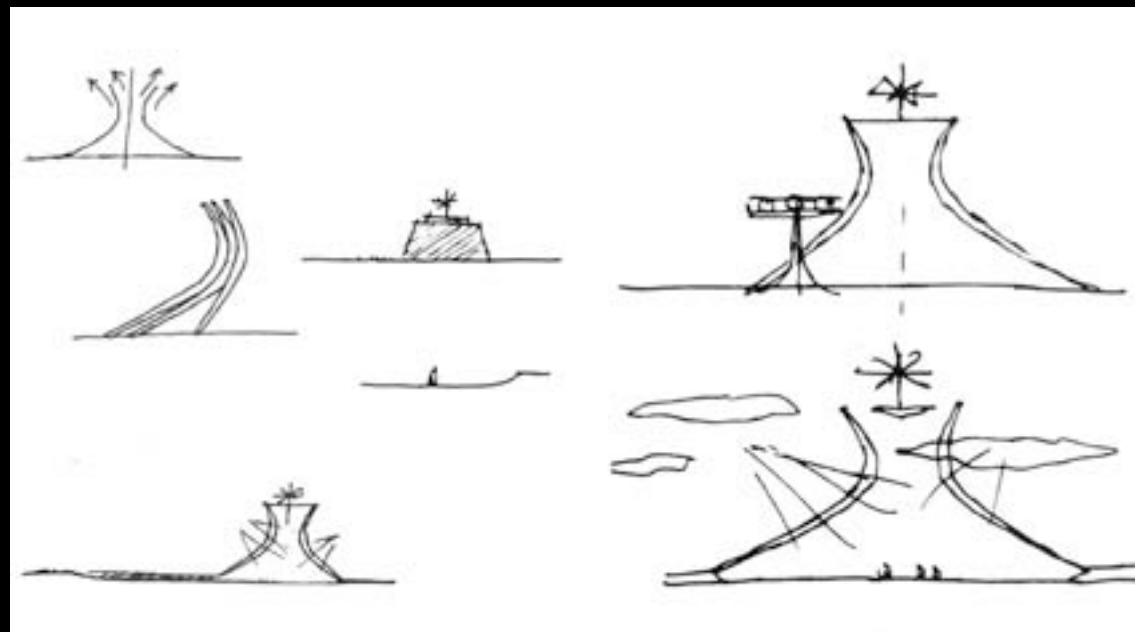


Adalberto Libera, Cinema Airone

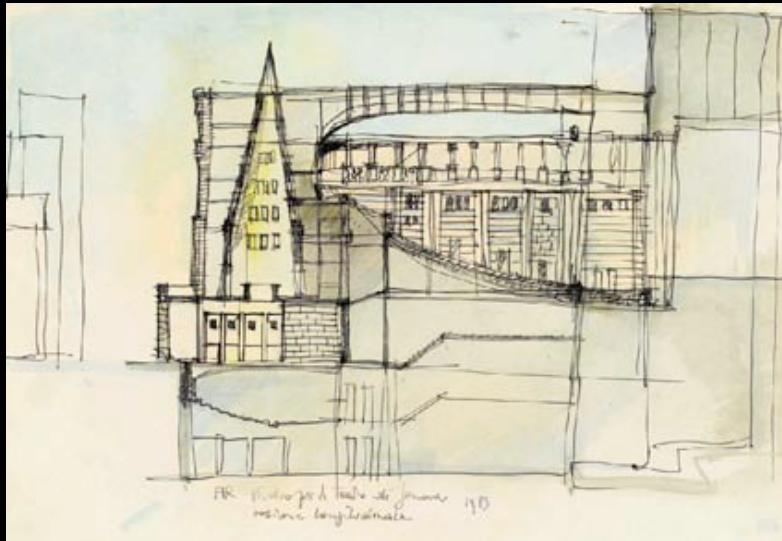




O. Niemeyer, 1958, Brasília, Congresso Nazionale



O. Niemeyer, 1959/'70, Brasília, Cattedrale

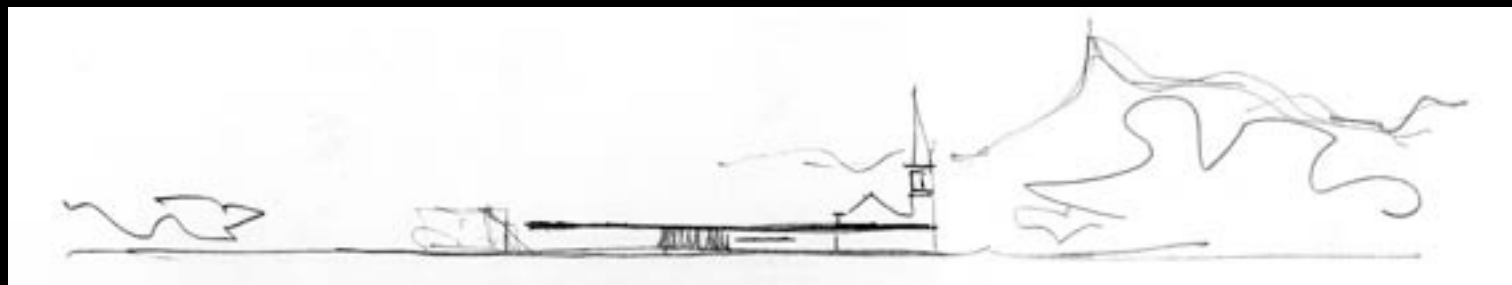
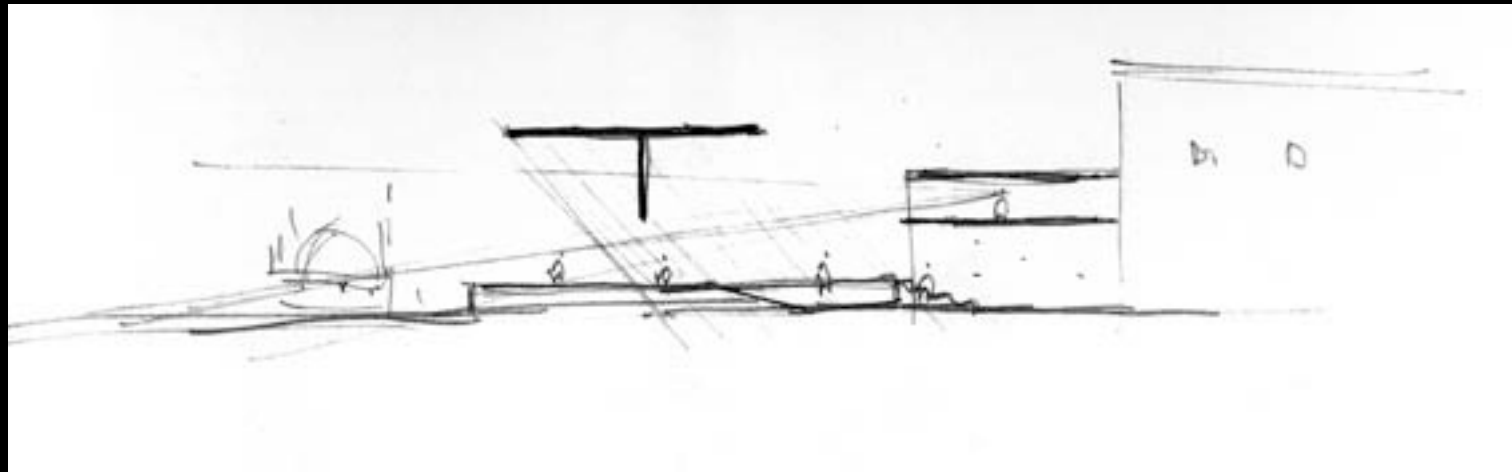


Aldo Rossi, 1983, Genova, Teatro Carlo Felice

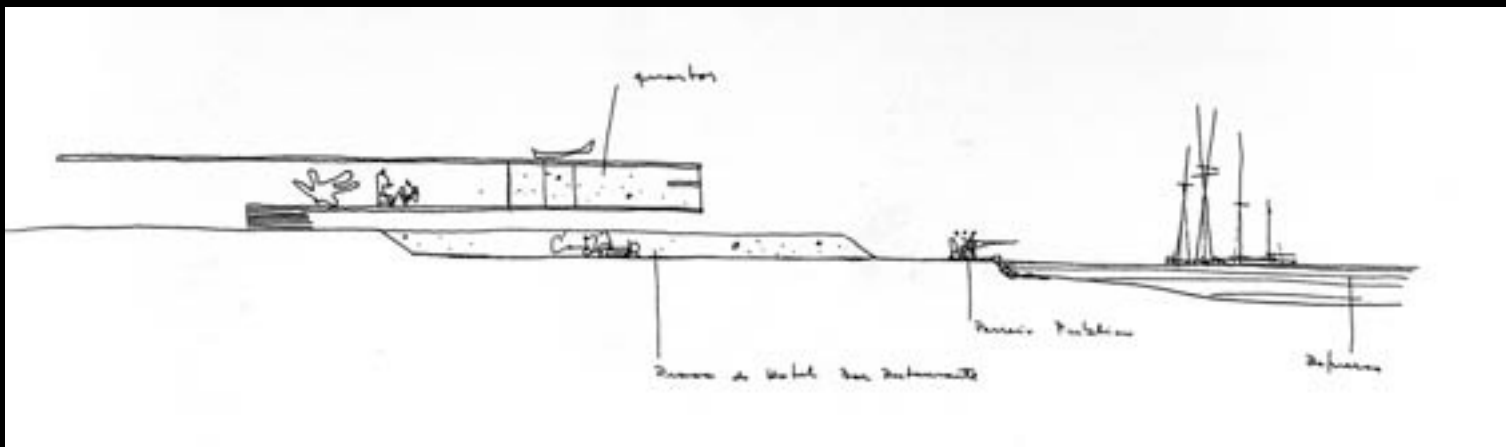
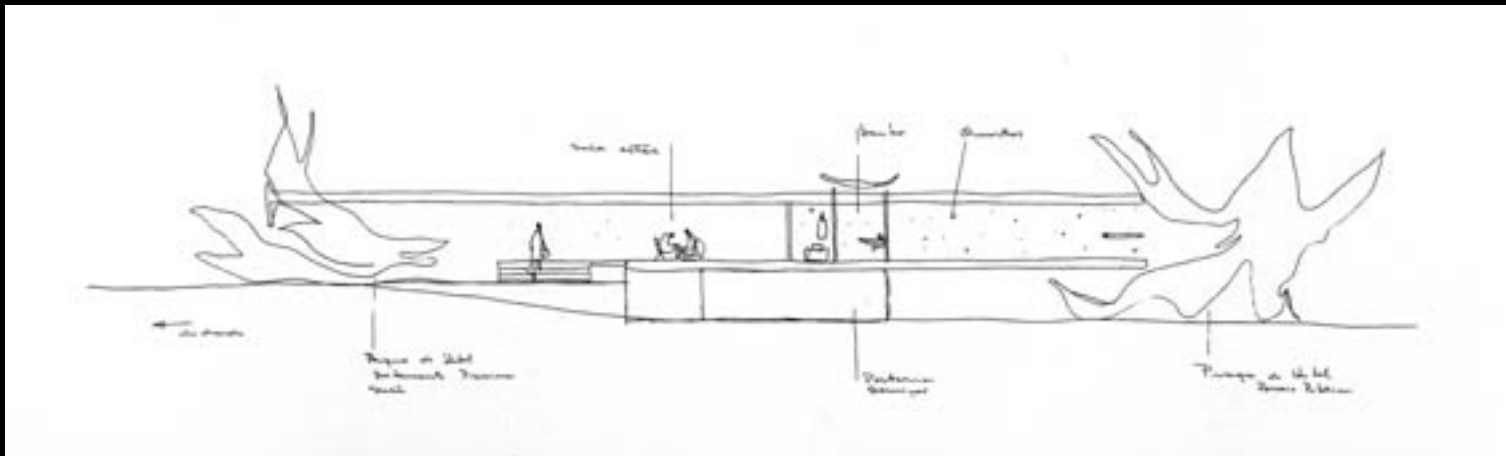
*Sezioni
continue*



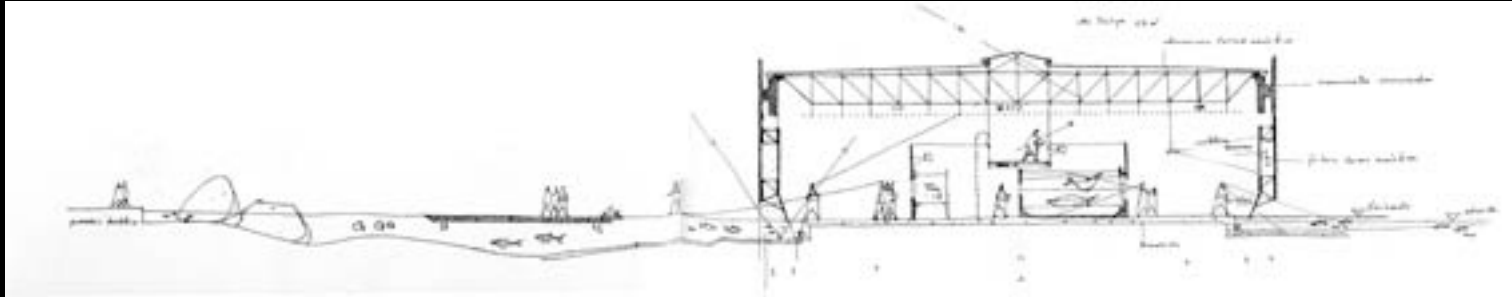
Paulo Mendes da Rocha



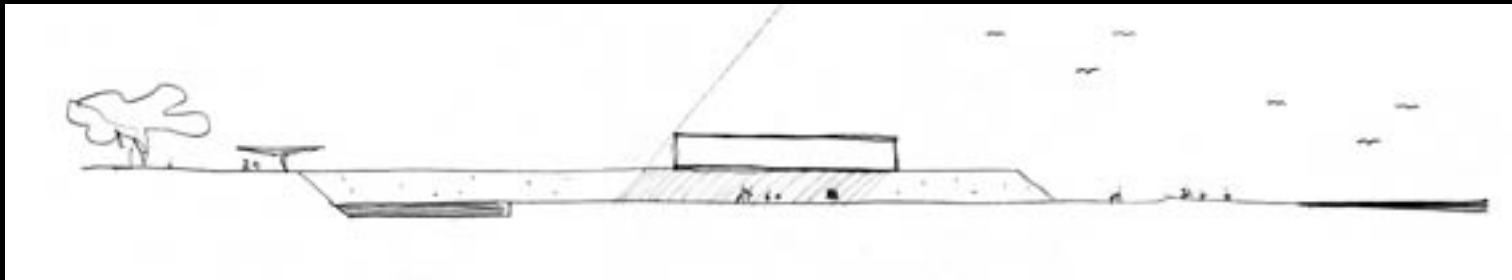
P. Mendes da Rocha, biblioteca de Rio de Janeiro, 1984



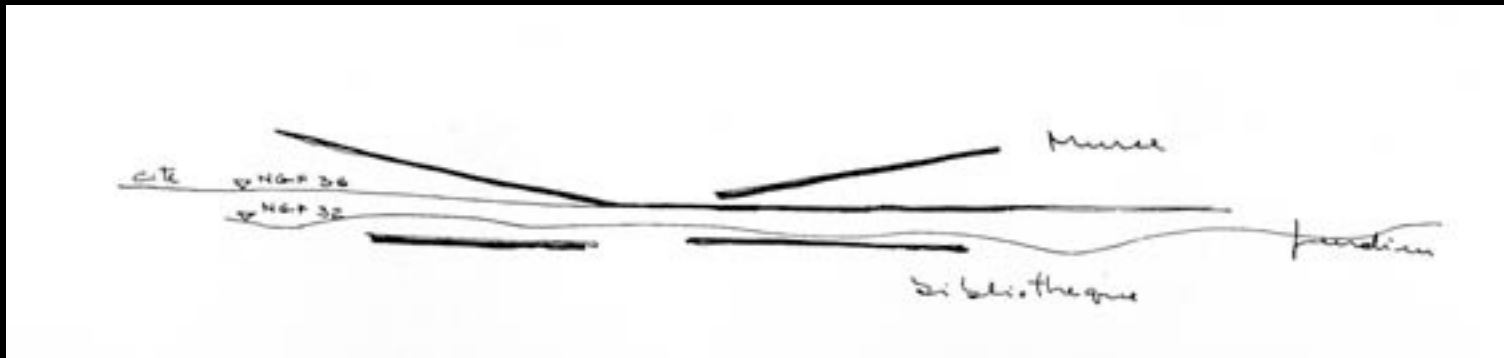
P. Mendes da Rocha, Hotel em Poxorêu, 1971



P. Mendes da Rocha, Aquário Municipal de Santos, 1991



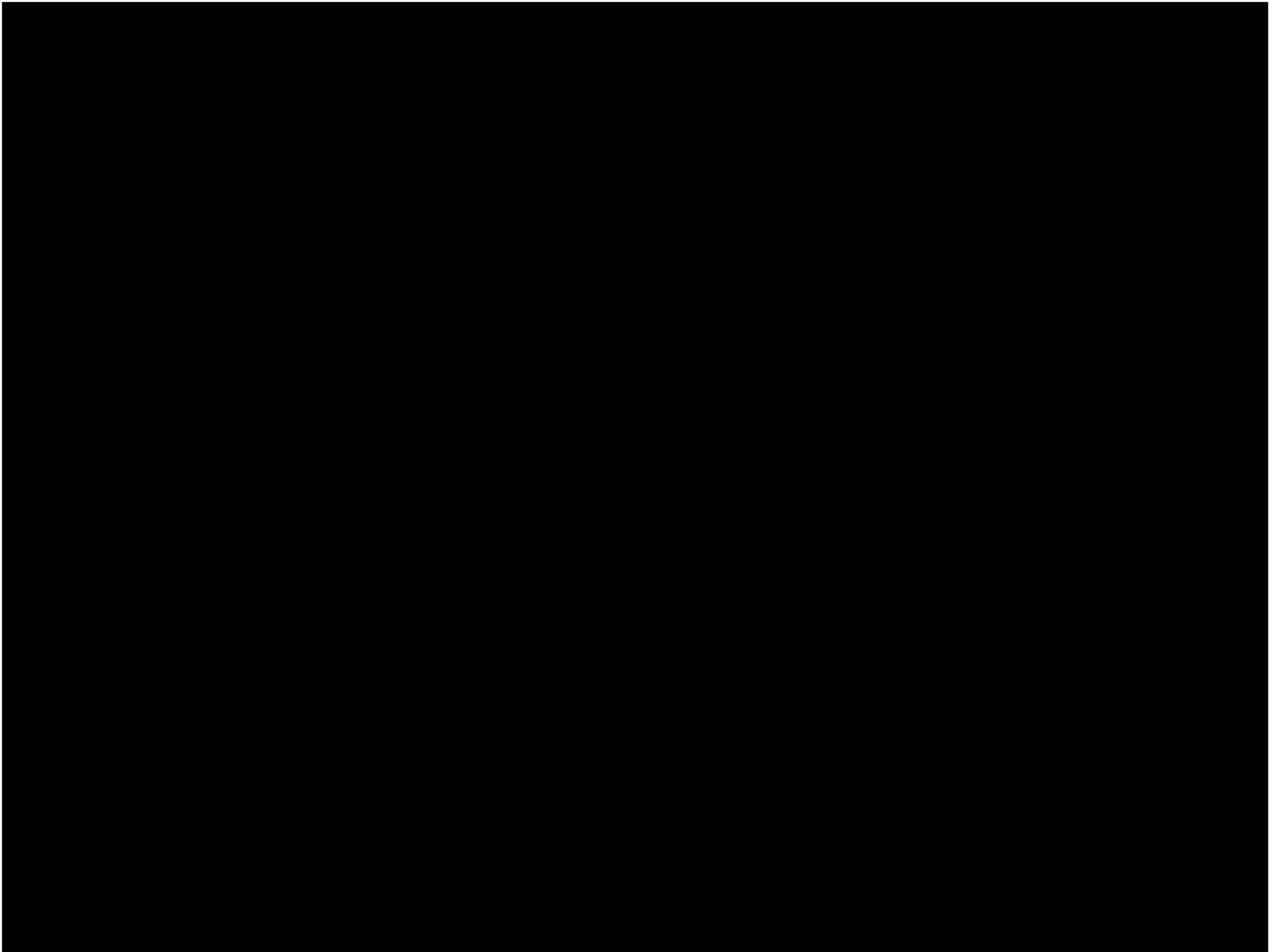
P. Mendes da Rocha, Clube da Orla, 1963



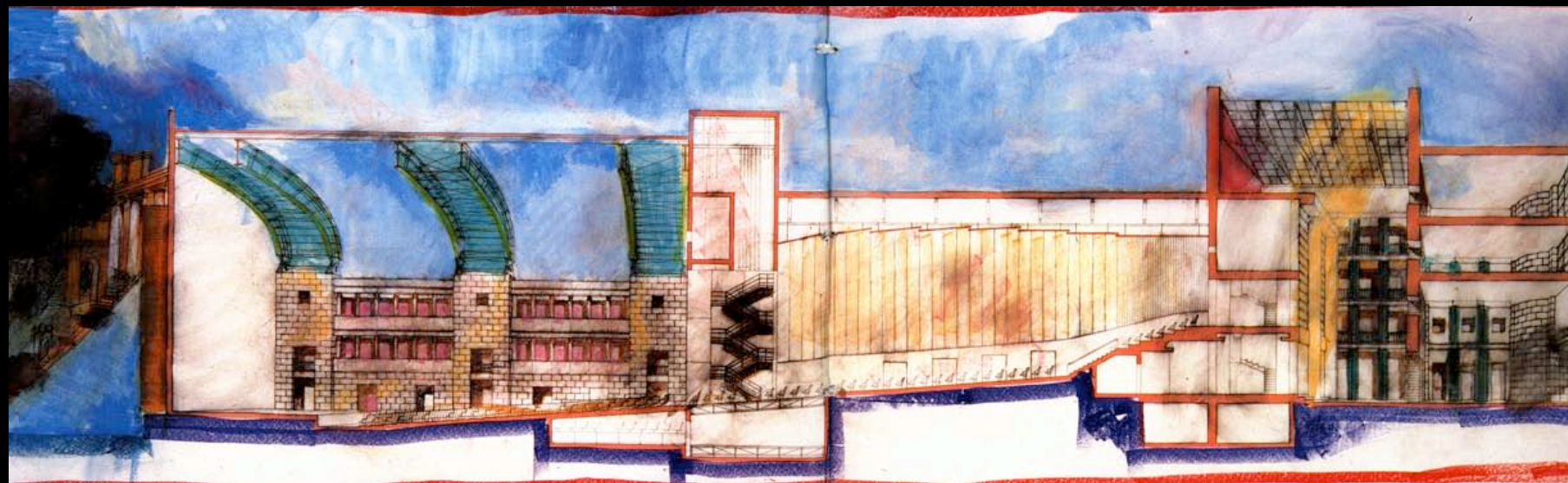
P. Mendes da Rocha, Centre Cultural George Pompidou, 1971

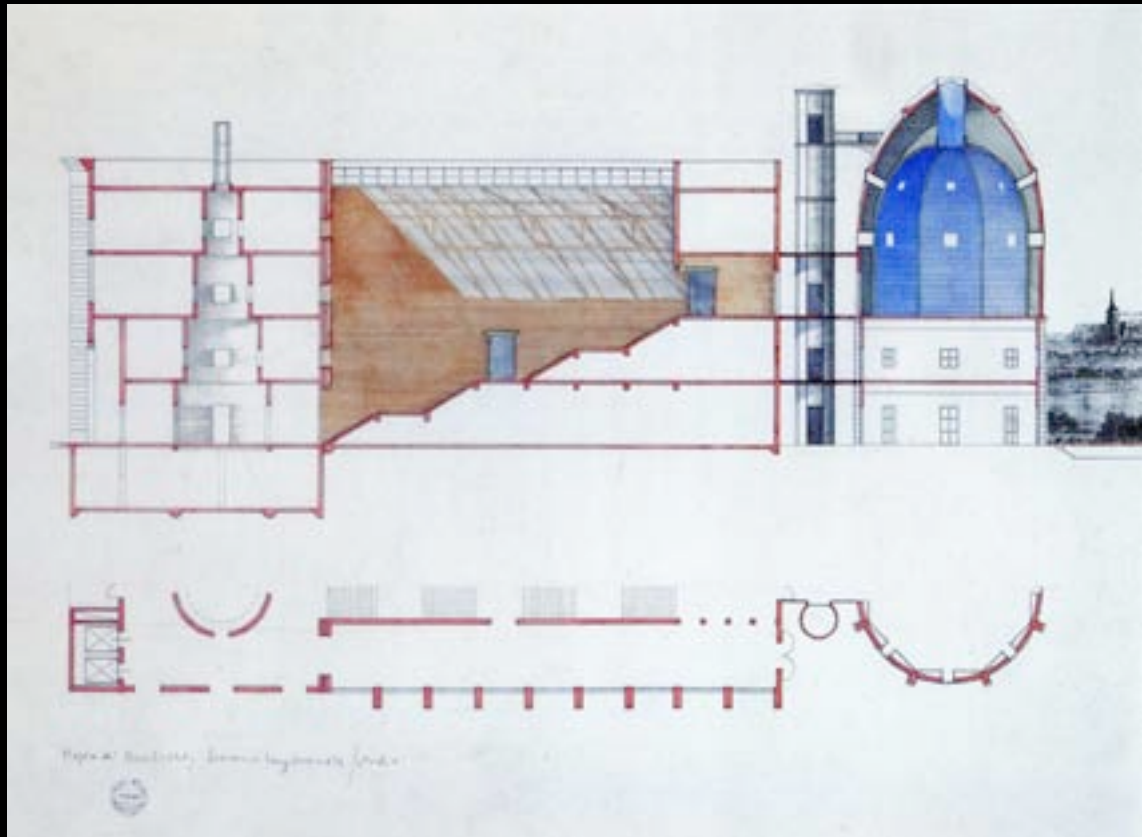




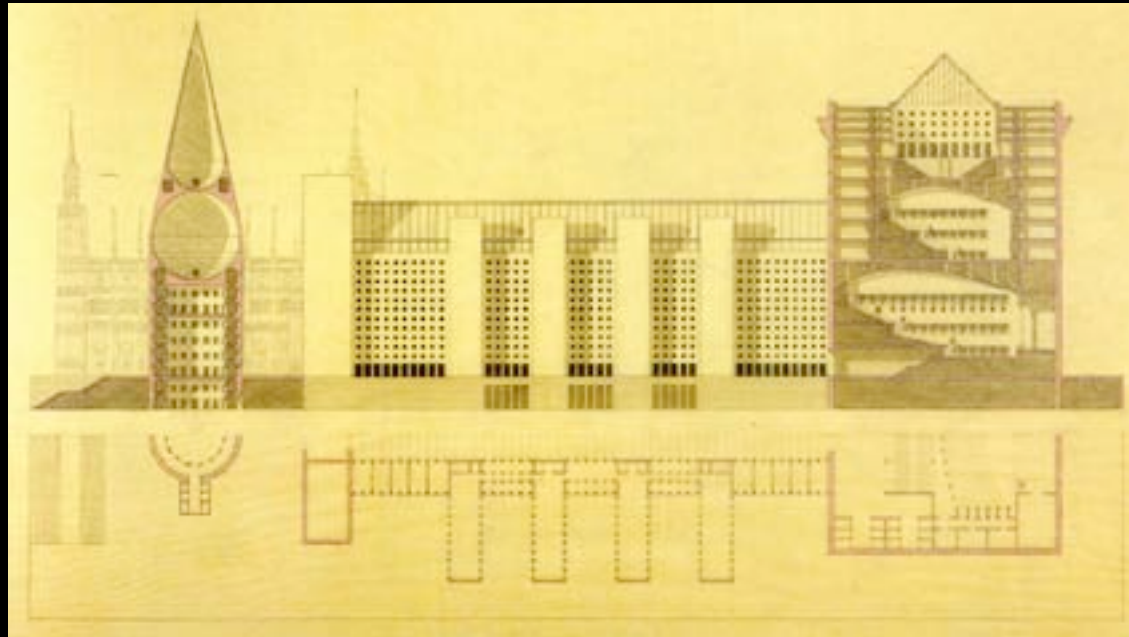


Aldo Rossi, Cinema?

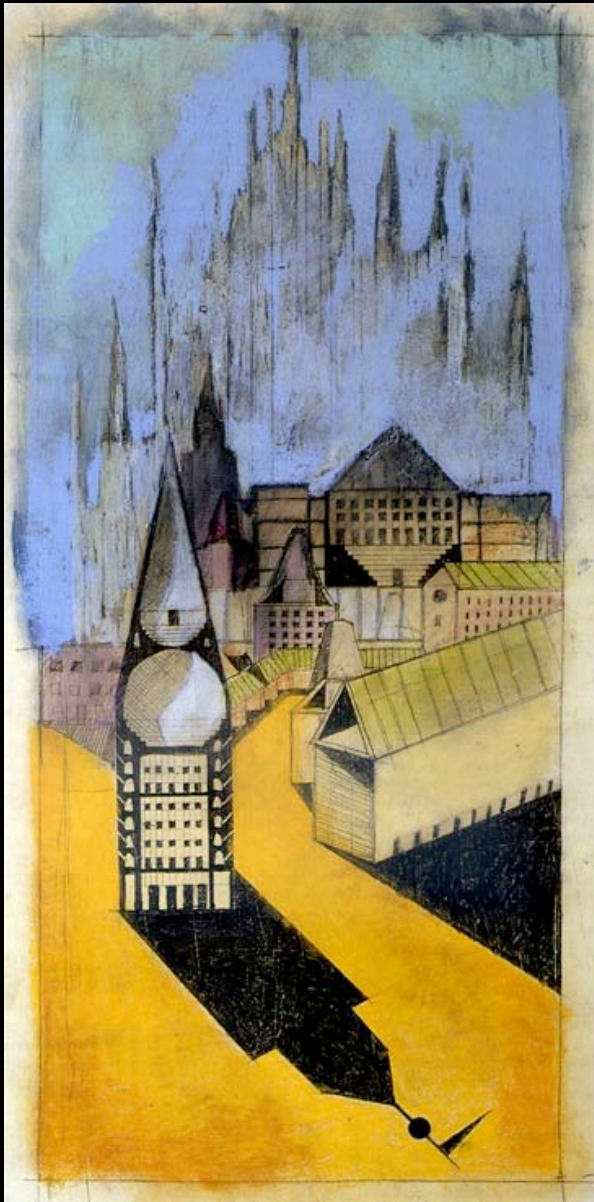




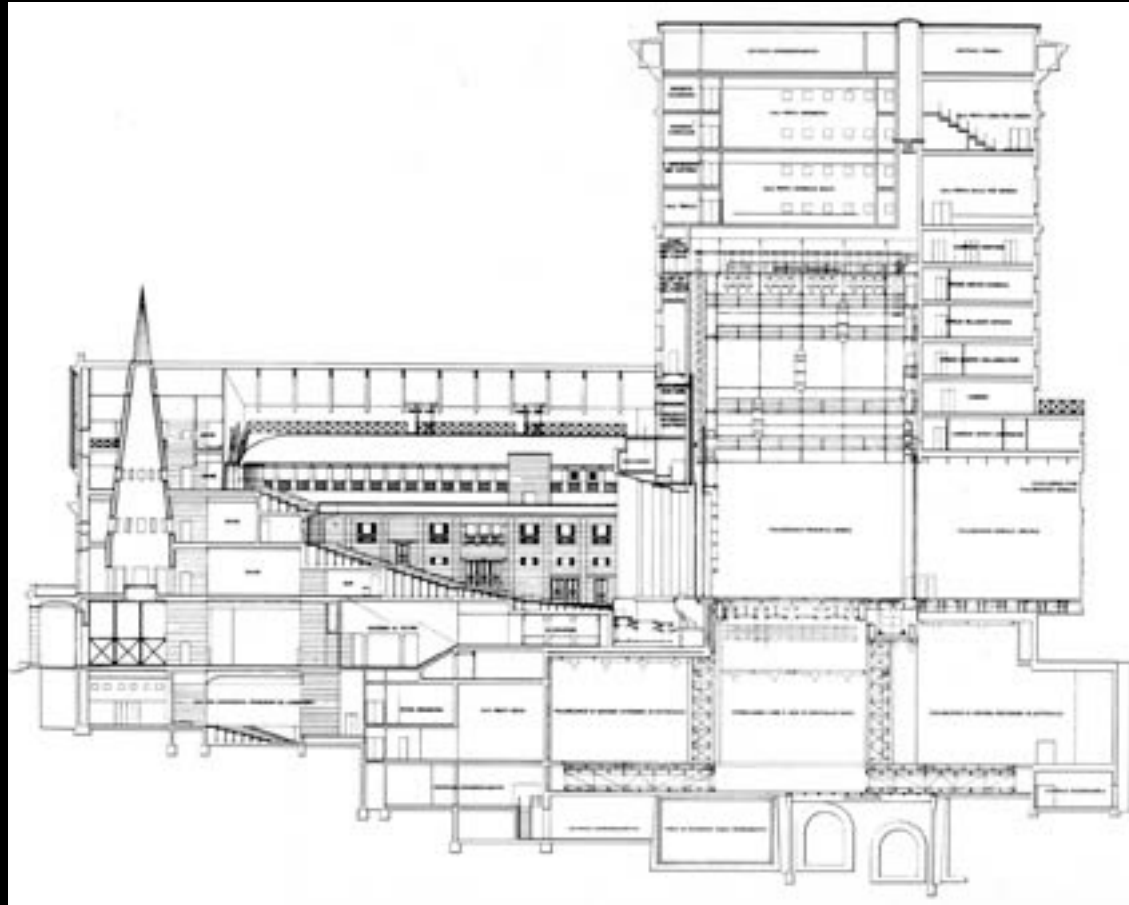
Aldo Rossi, 1982, Milano, Progetto per il nuovo palazzo dei congressi



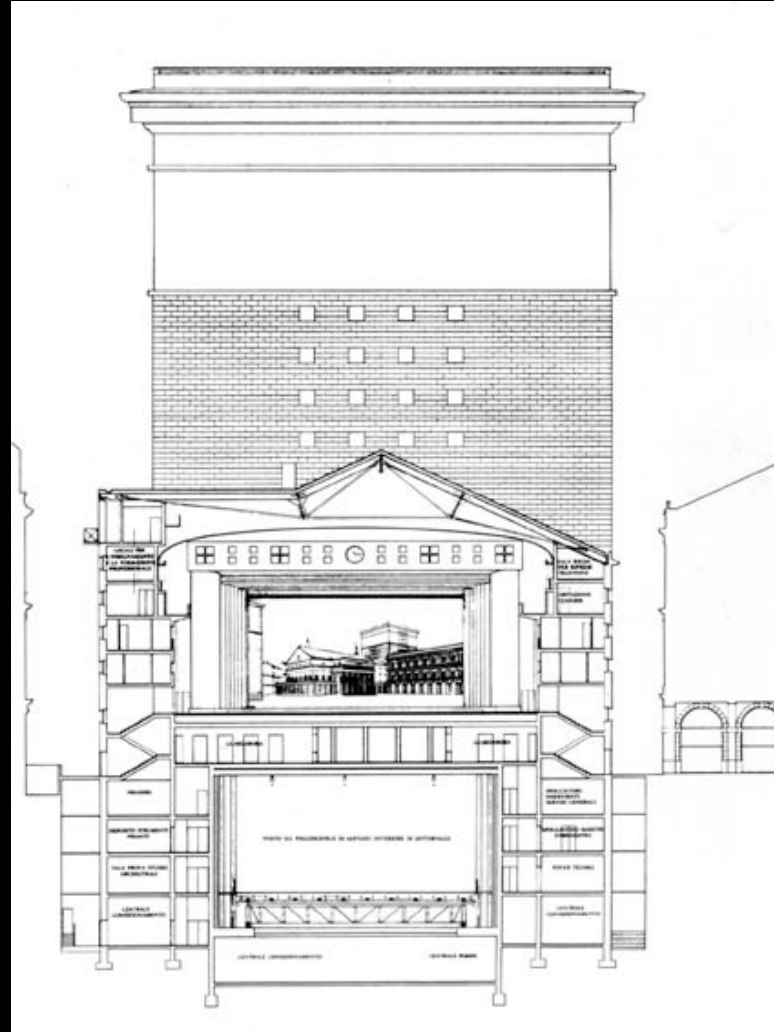
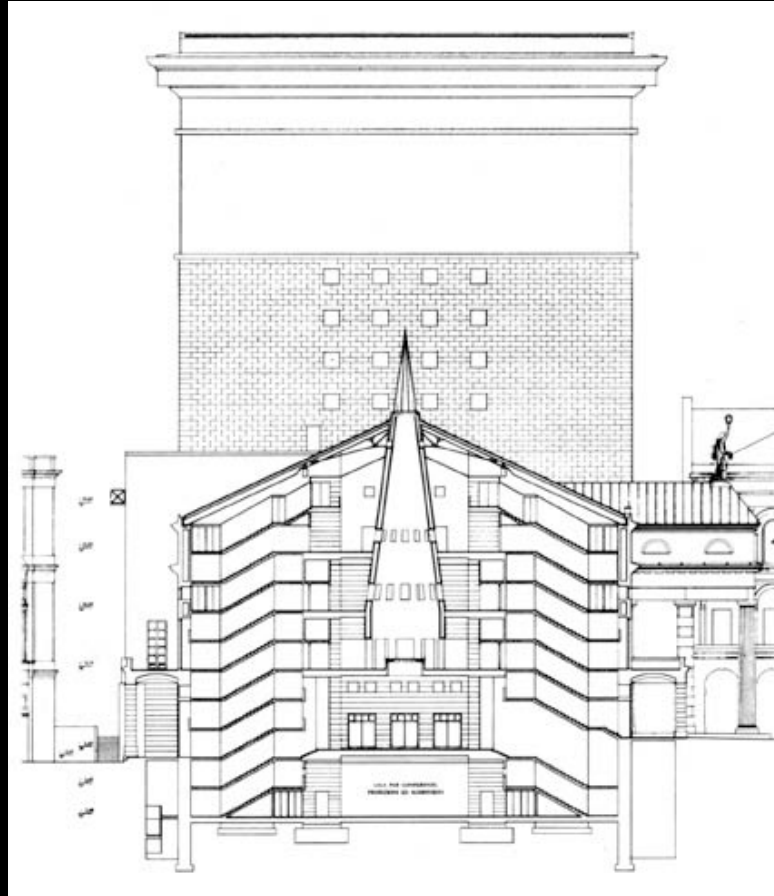
Aldo Rossi, 1982, Milano, Progetto per il nuovo palazzo dei congressi



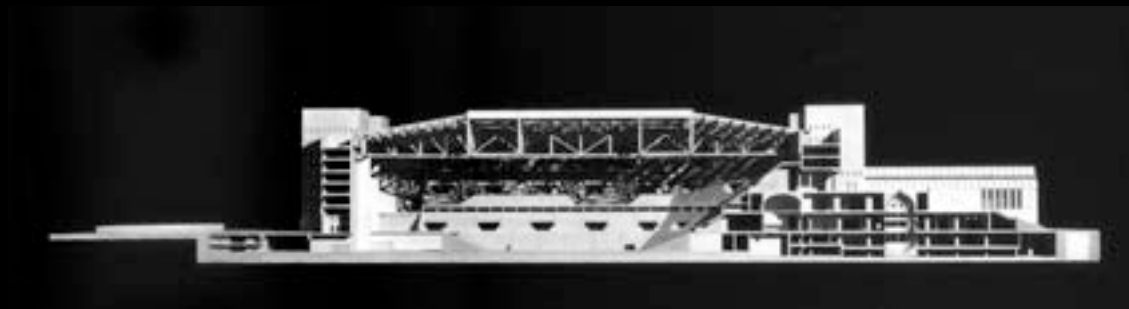
Aldo Rossi, 1982, Milano, Progetto per il nuovo palazzo dei congressi



Aldo Rossi e Ignazio Gardella, 1983, Genova, Teatro Carlo Felice



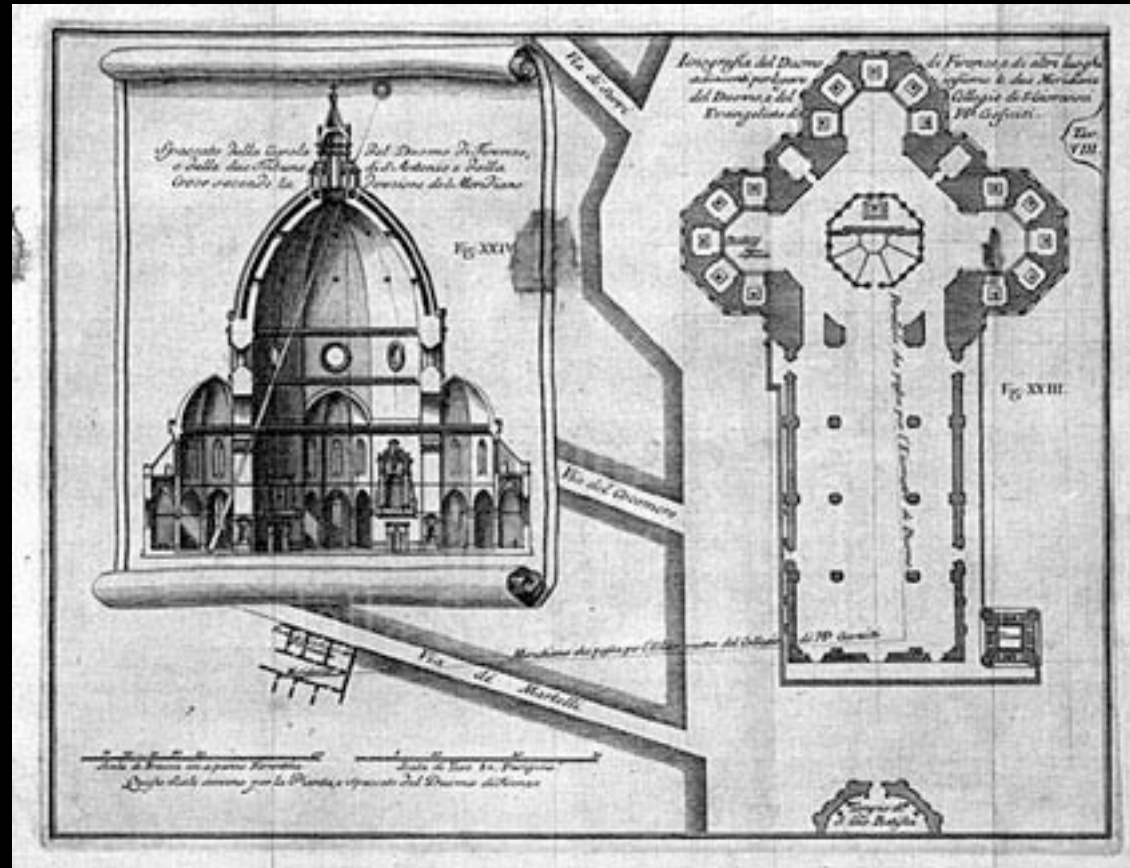
Aldo Rossi e Ignazio Gardella, 1983, Genova, Teatro Carlo Felice



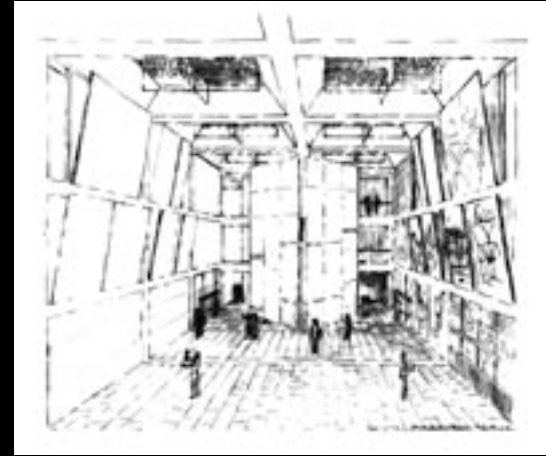
Aldo Rossi, 1988/'89, Milano, Progetto per il palazzo dello sport



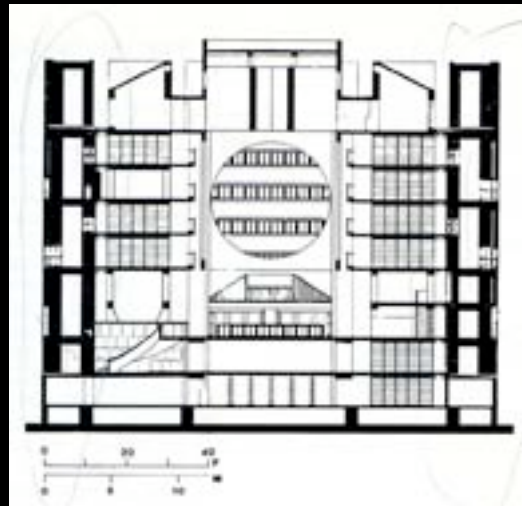
Aldo Rossi, 1990, Maastricht, Progetto per il Bonnefantenmuseum



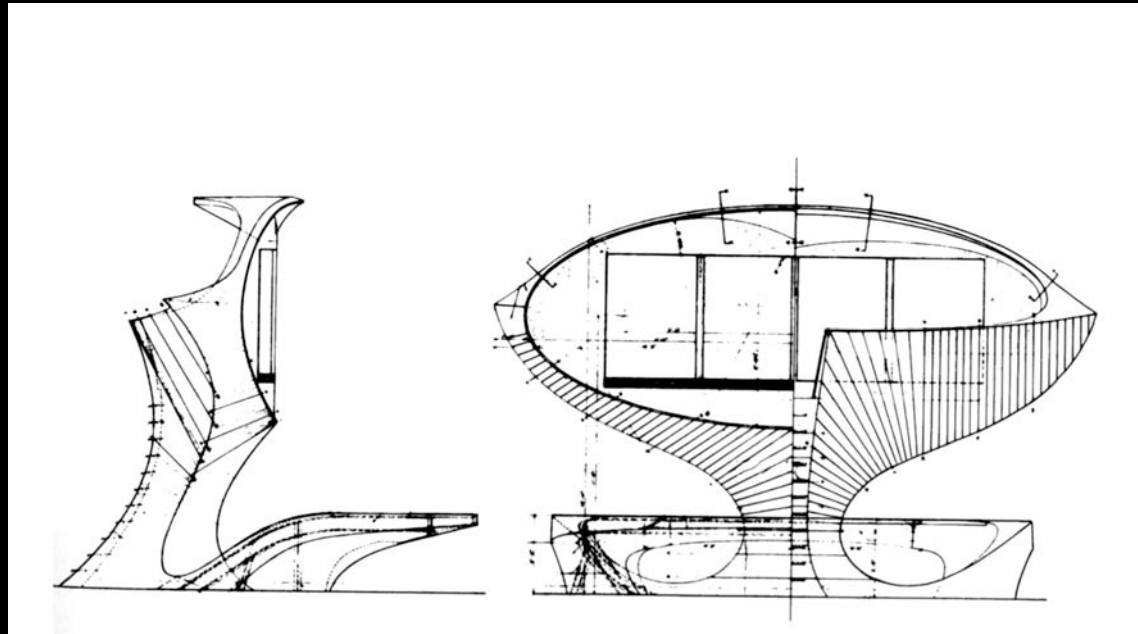
Brunelleschi



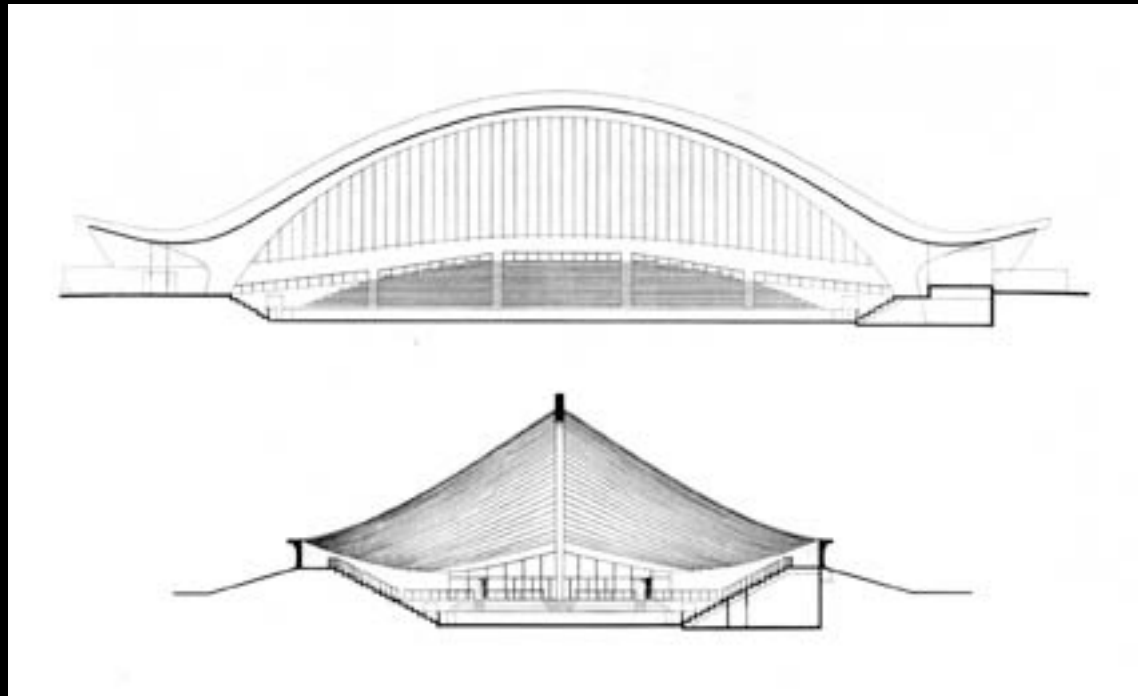
Louis I. Kahn, Kimbell art museum



Louis I. Kahn, Exeter Library



E. Saarinen, 1958/62, TWA Information Desk



E. Saarinen, Yale, Hockey Rink

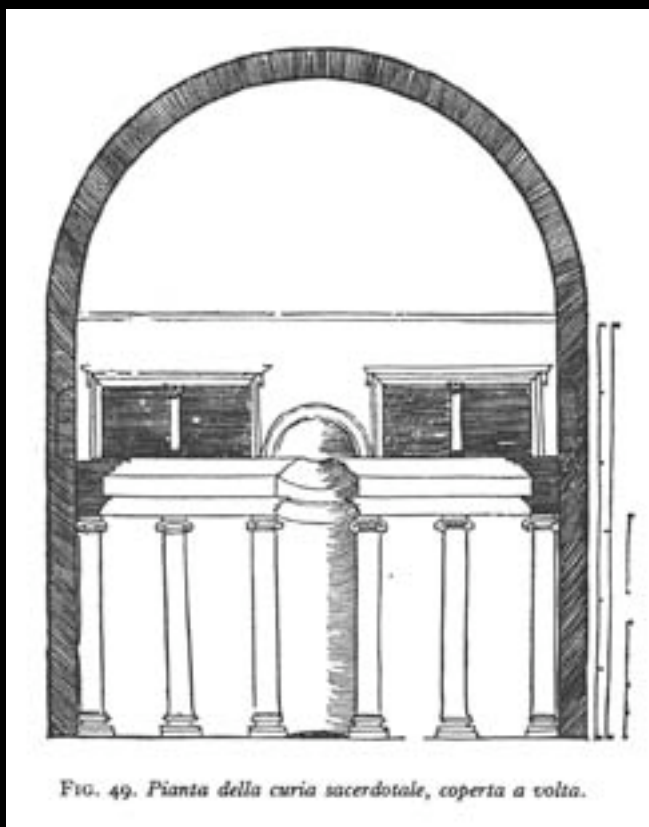


FIG. 49. Pianta della curia sacerdotale, coperta a volta.

L. B. Alberti, De Re Aedificatoria, Sezione della Curia Sacerdotale

Pensare lo spazio in sezione

