

Edoardo Caminiti

# IL MUSEO DELLA CITTÀ DI MESSINA: modelli di impianto urbano

Reggio Calabria\_06\_12\_2013

01\_edifici compatti



02\_edifici a corte



03\_edifici lineari



04\_combinazione di linee

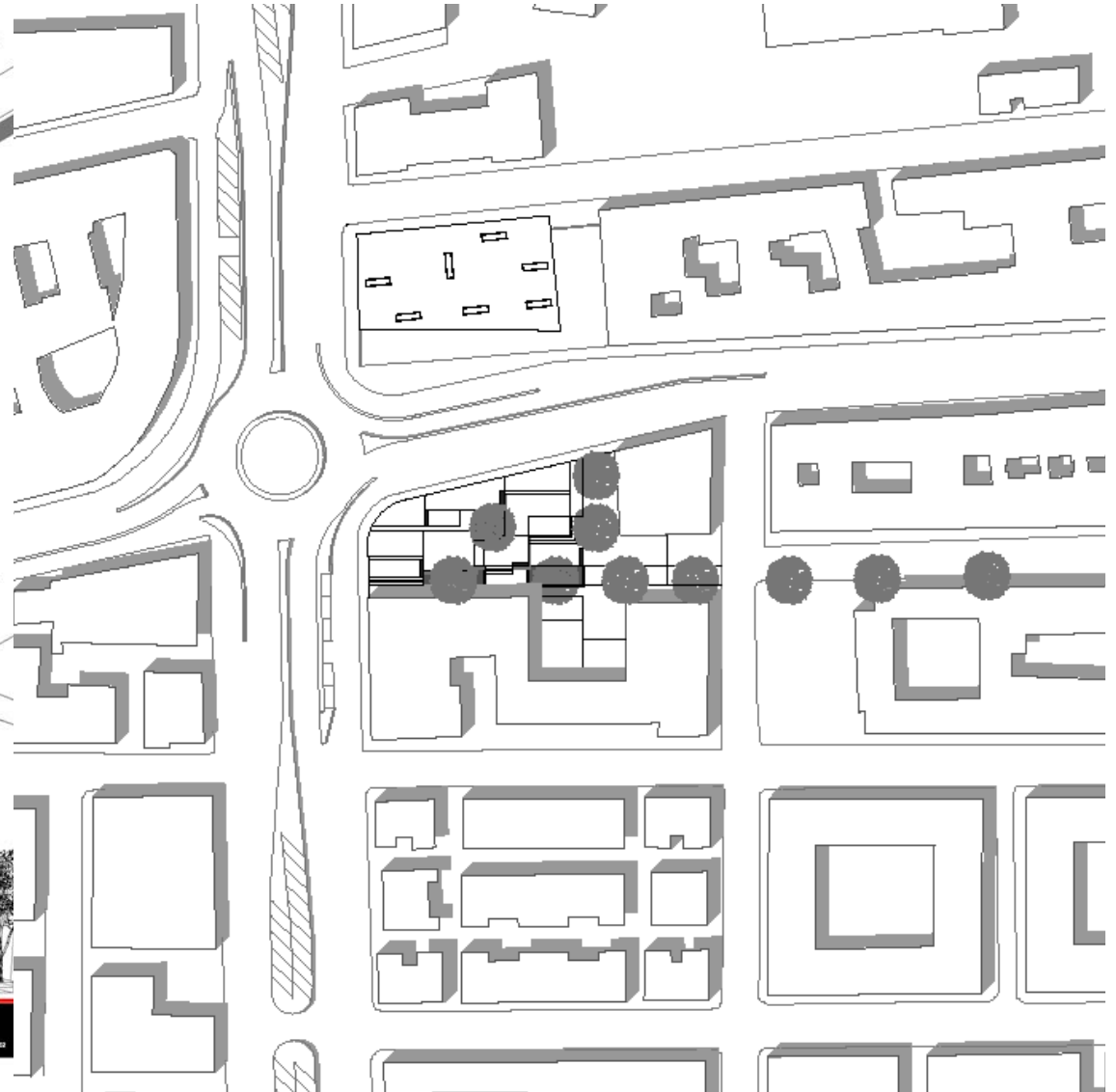
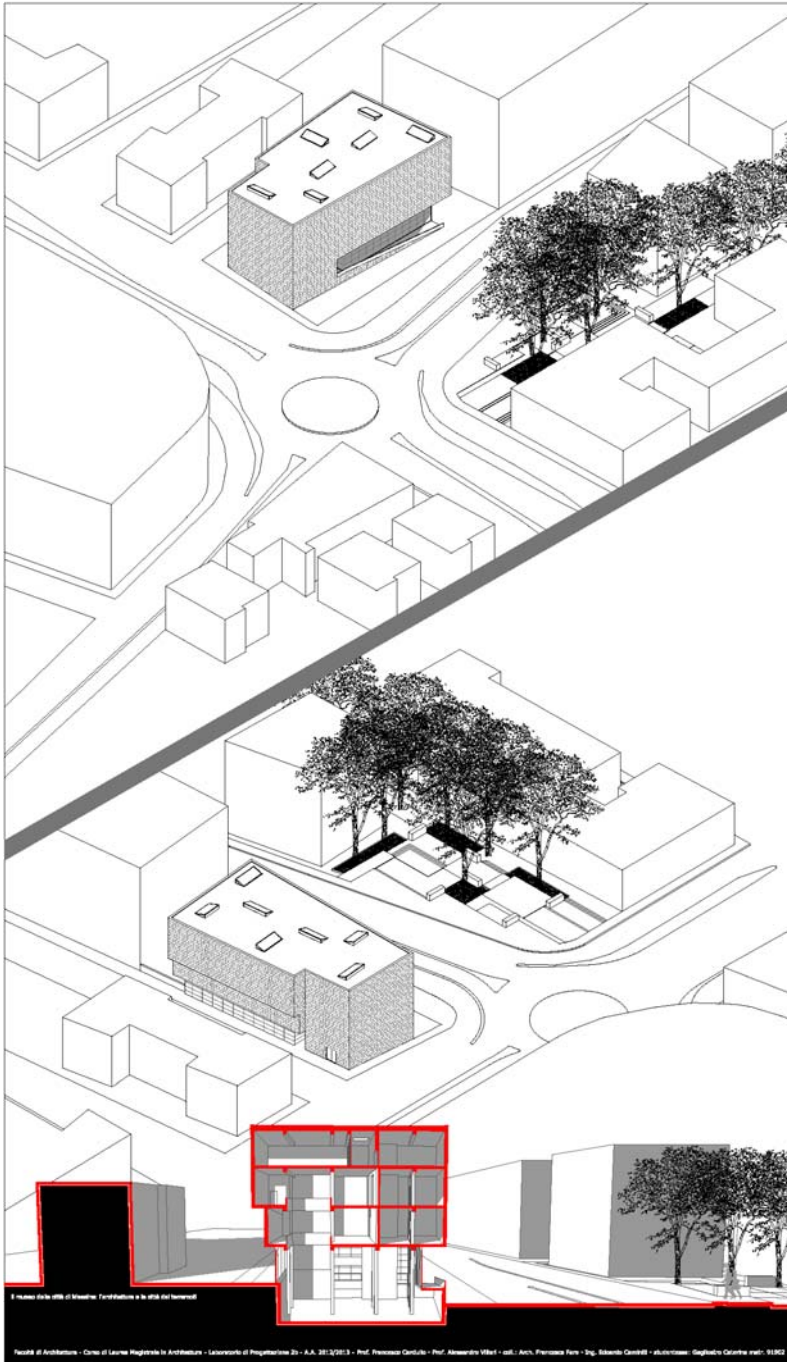


05\_aggregazione di volumi



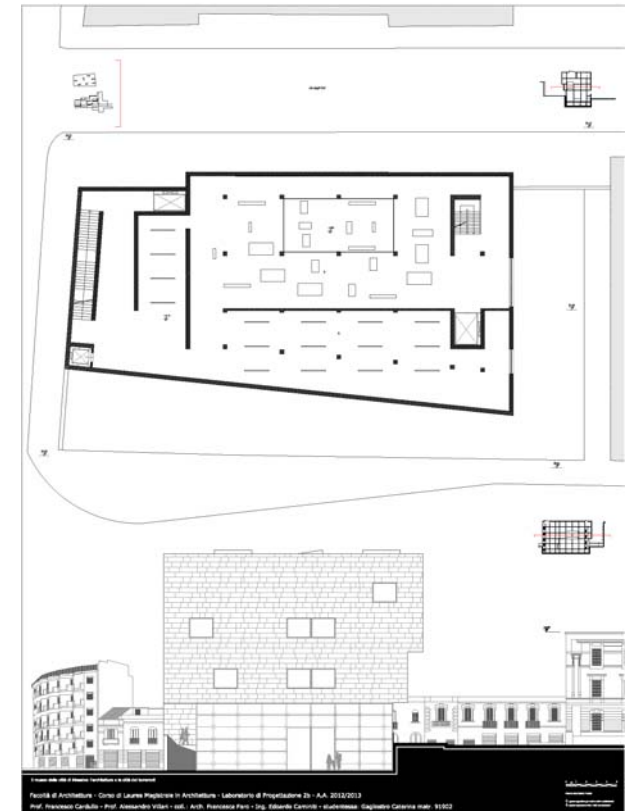
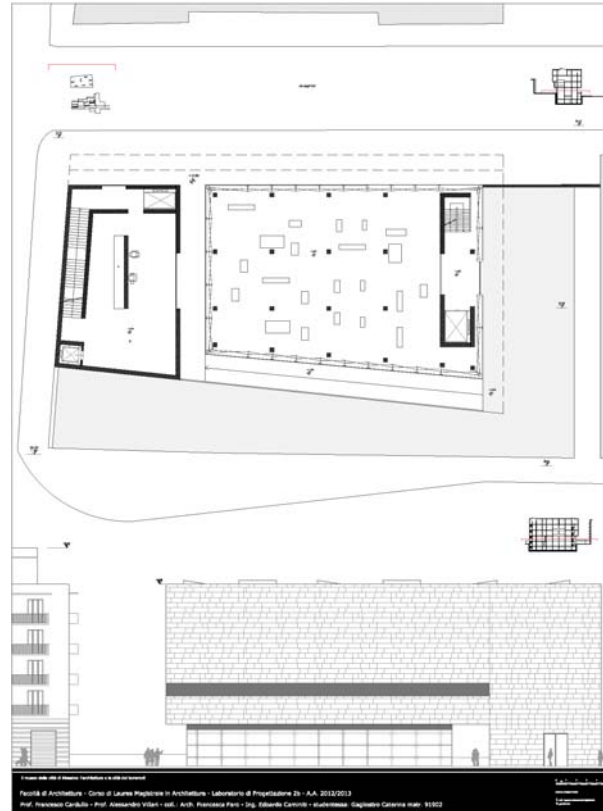
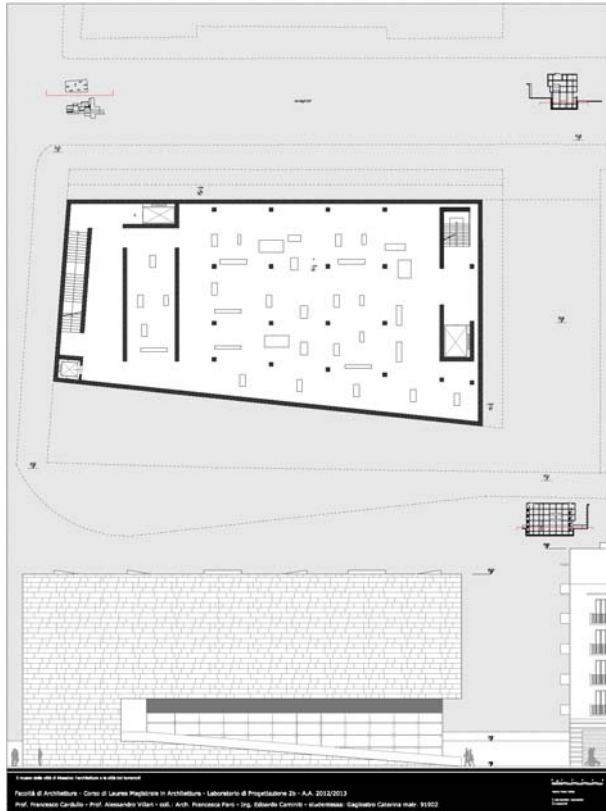
# 01\_edifici compatti

Caterina Gagliostro\_12-13



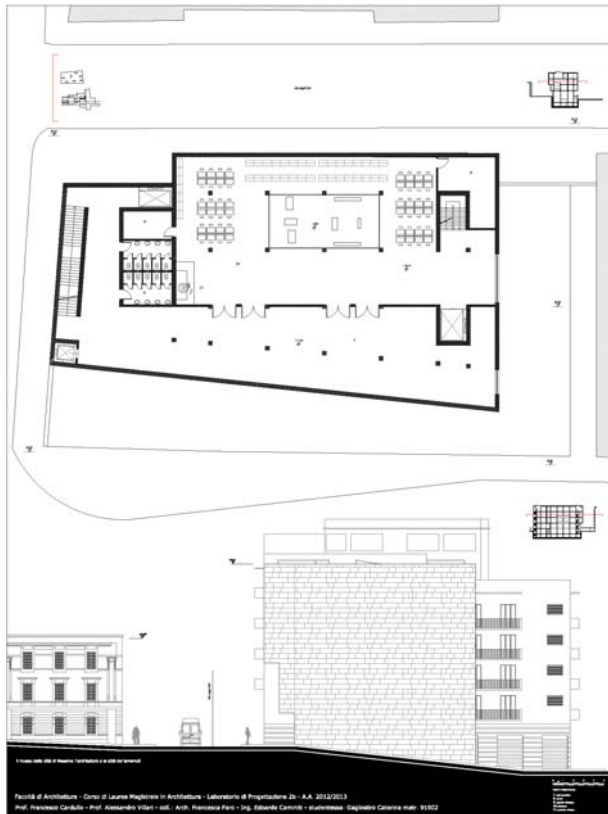
# 01\_edifici compatti

## Caterina Gagliostro\_12-13

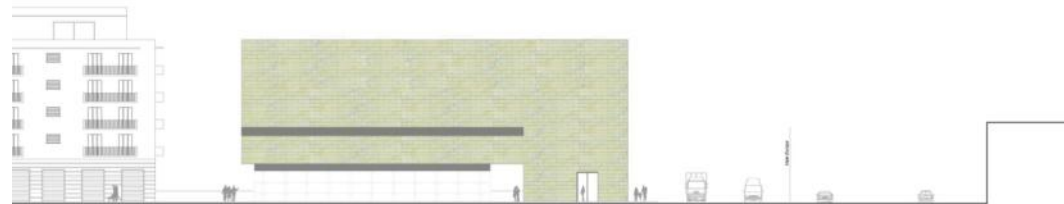
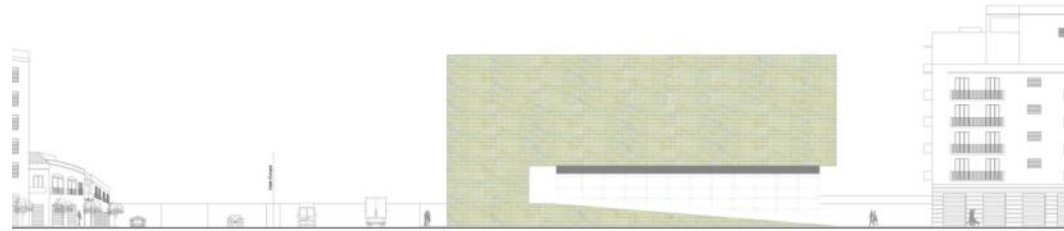


# 01\_edifici compatti

## Caterina Gagliostro\_12-13



# 01\_edifici compatti Caterina Gagliostro\_12-13



Il museo della città di Messina: l'architettura e la città dei terracchi

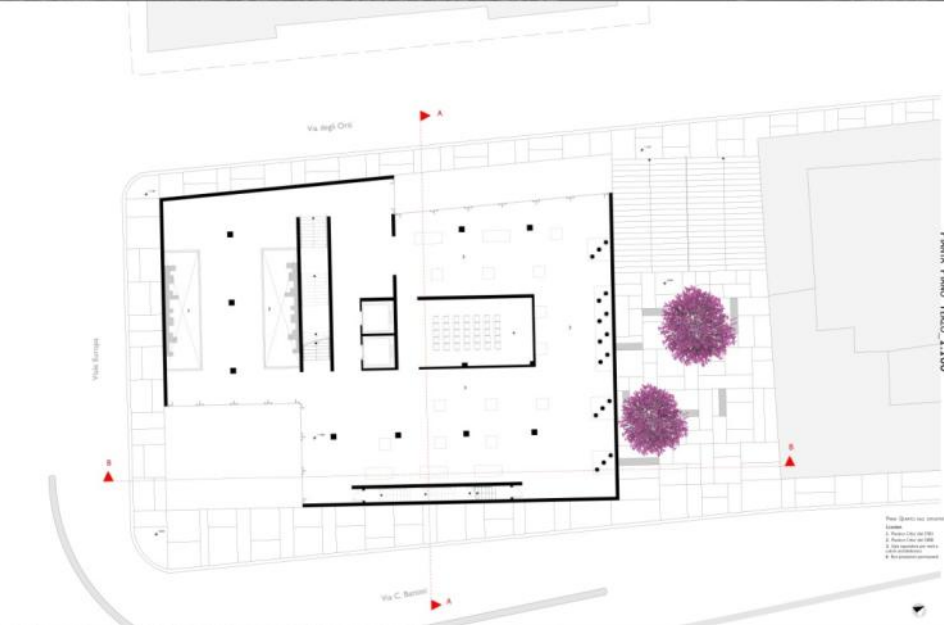




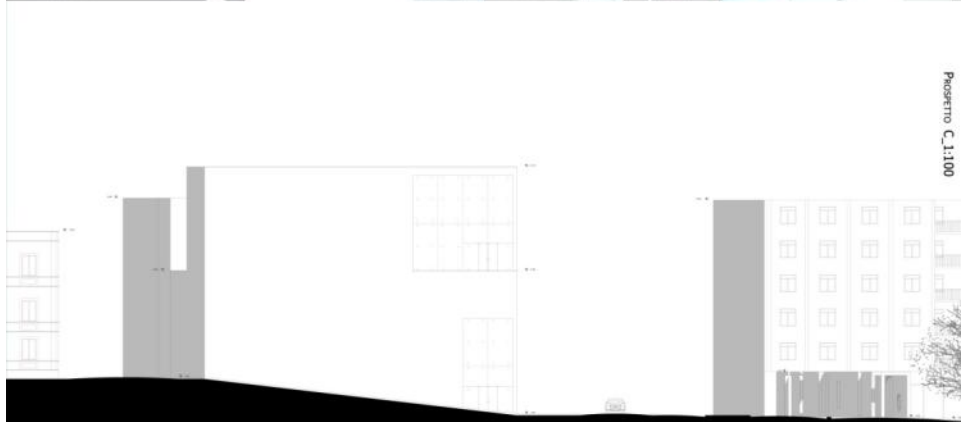
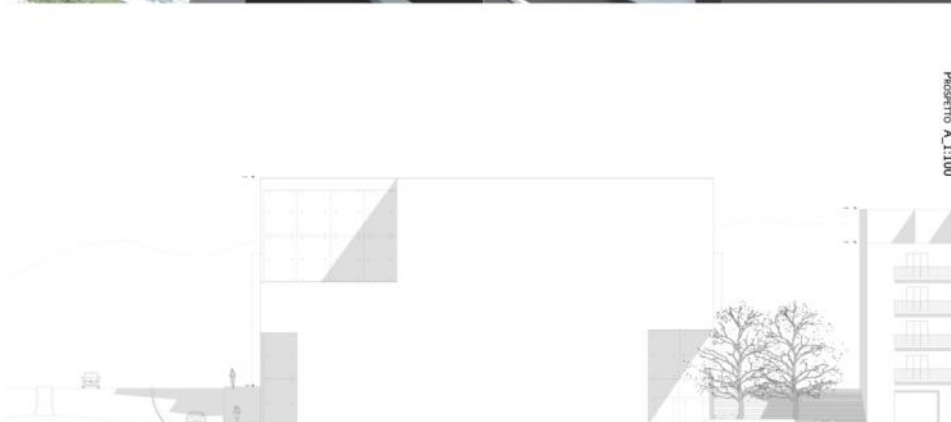
# 01\_edifici compatti

## Chiara Gentiluomo\_12-13



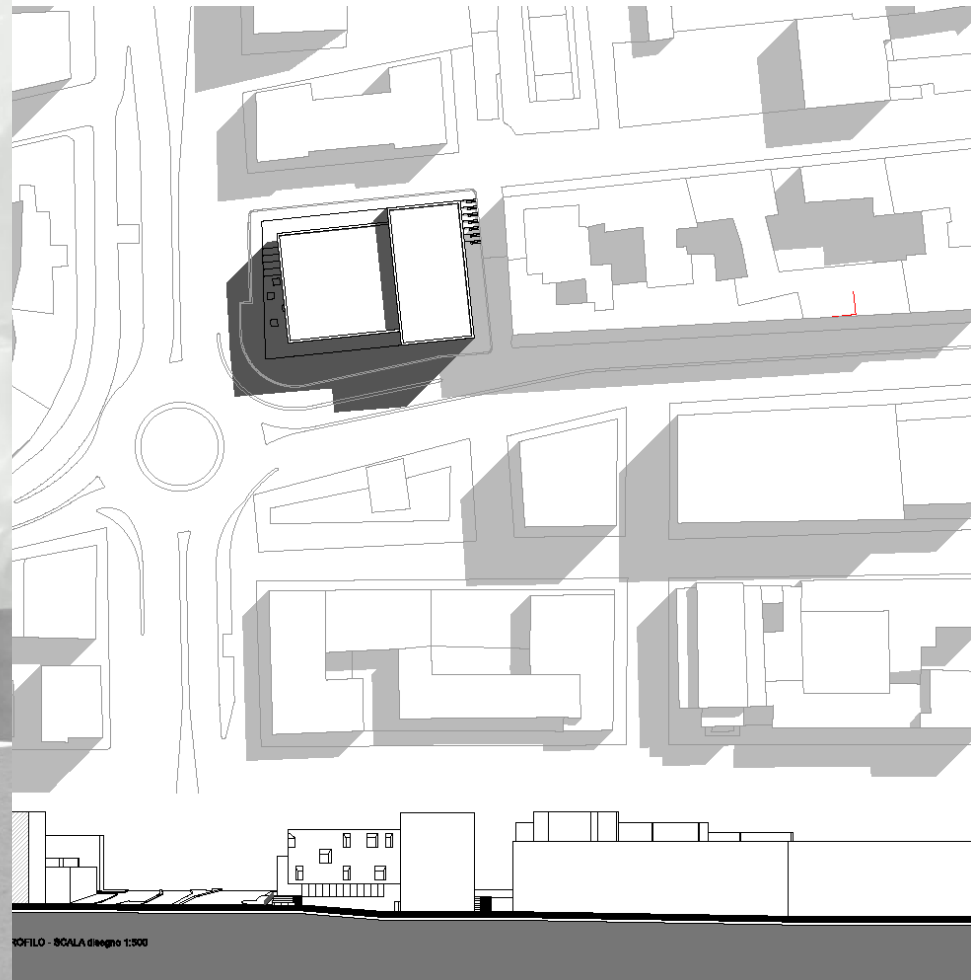


# 01\_edifici compatti Chiara Gentiluomo\_12-13





01\_edifici compatti  
Annalisa Varone\_12-13

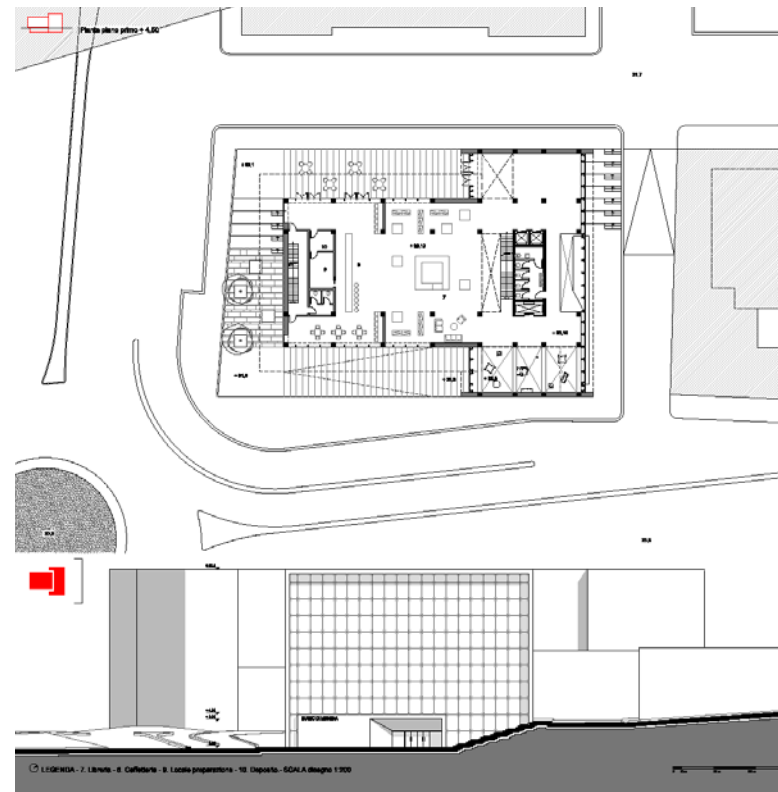
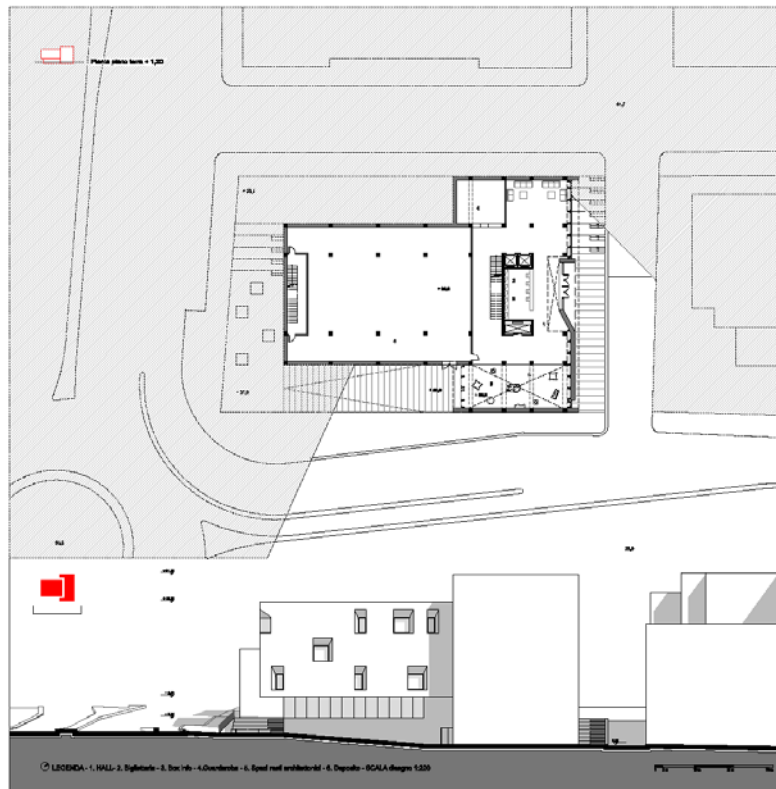


PROFILO - SCALA disegno 1:500



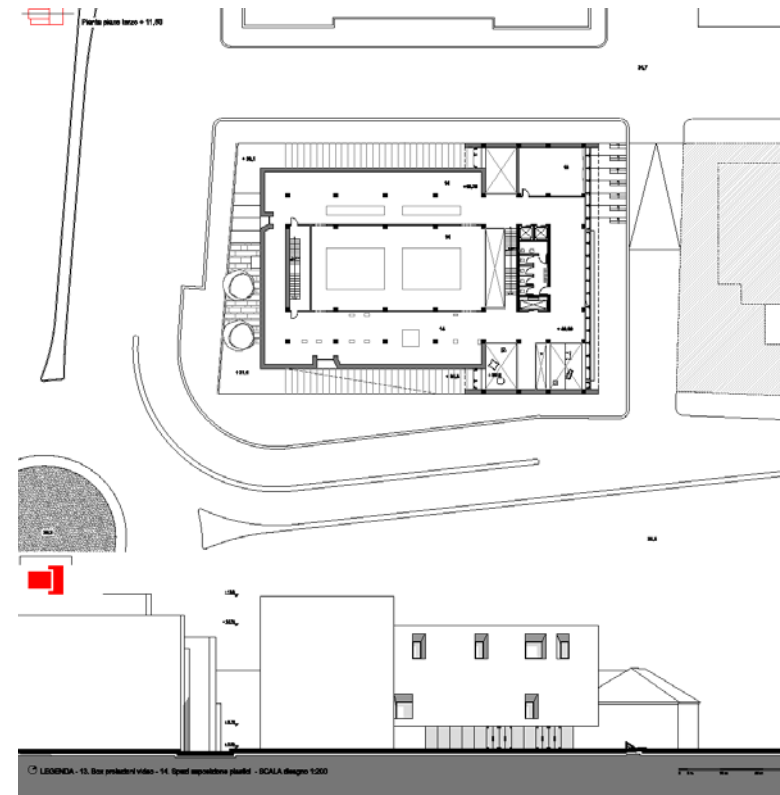
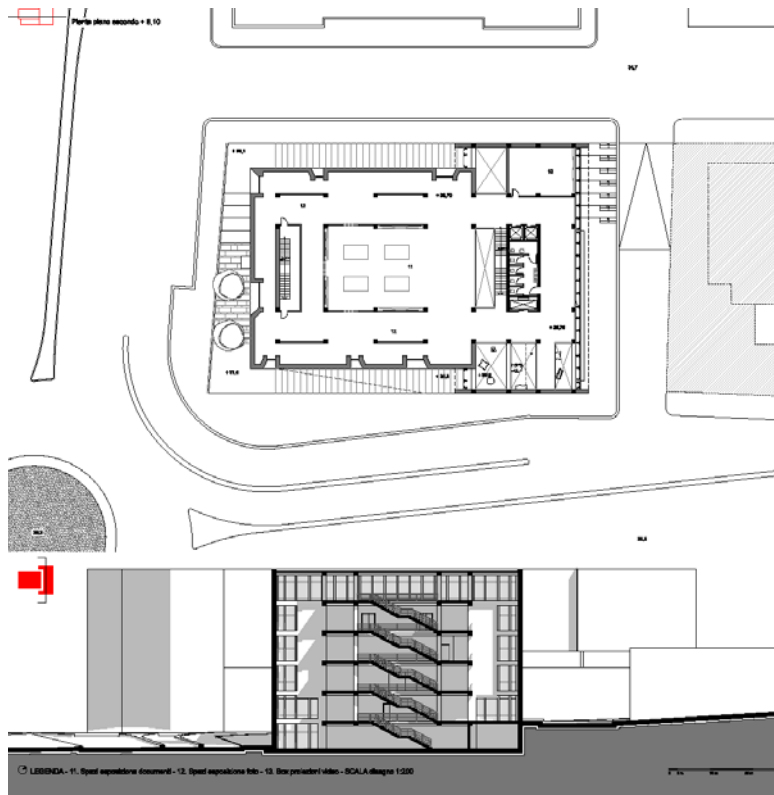
# 01\_edifici compatti

## Annalisa Varone\_12-13



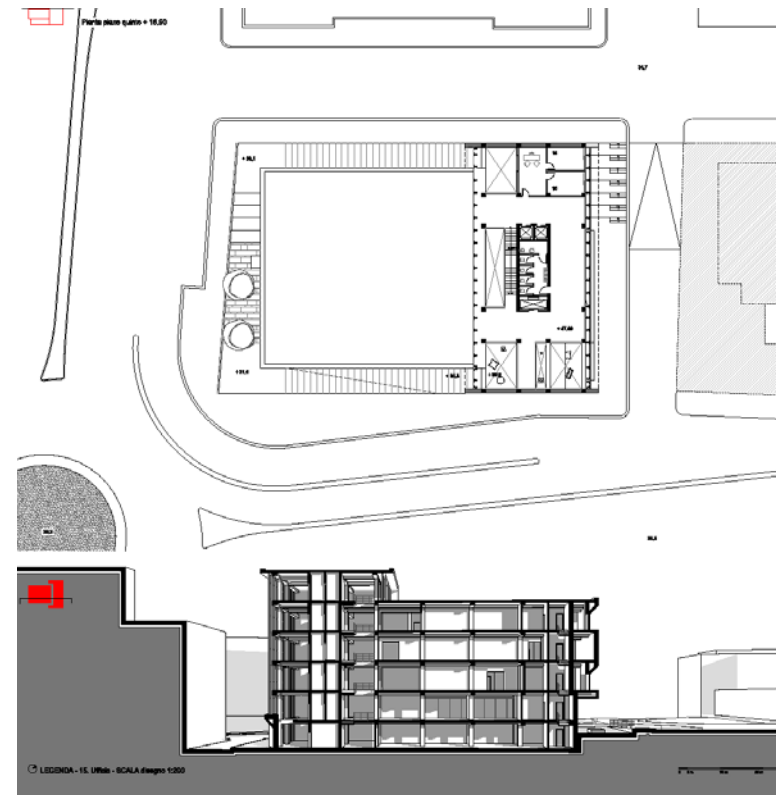
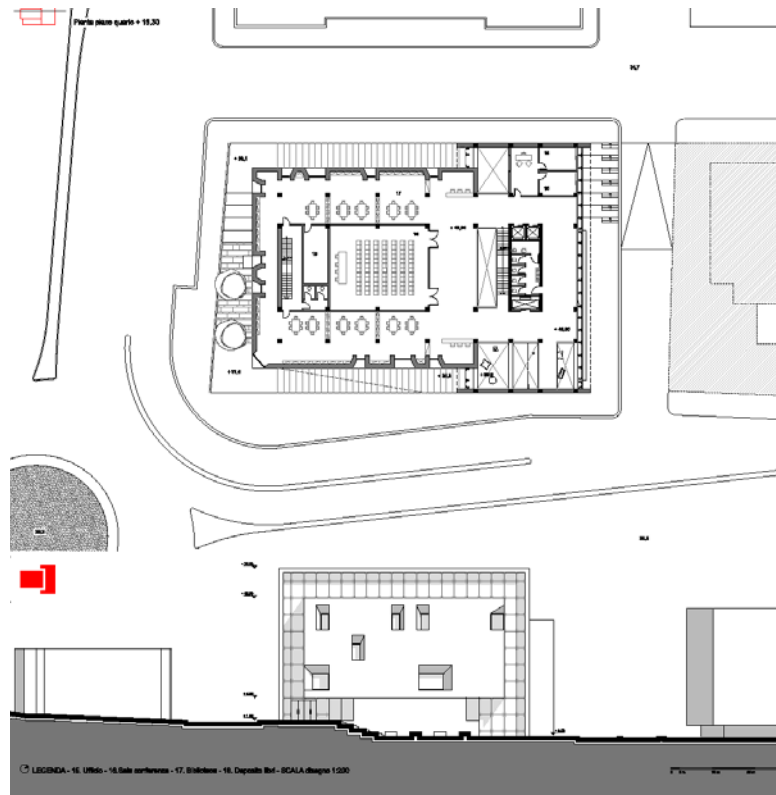
# 01\_edifici compatti

## Annalisa Varone\_12-13



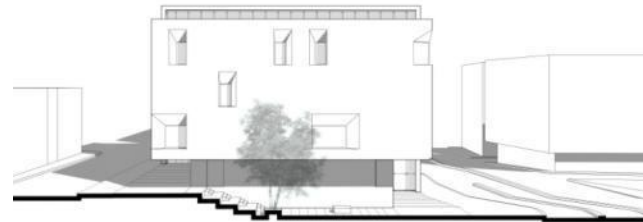
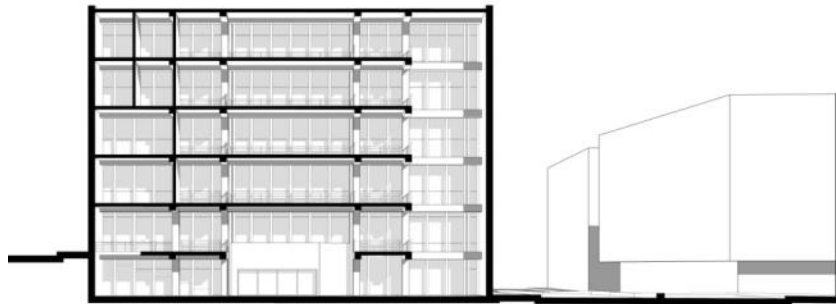
# 01\_edifici compatti

## Annalisa Varone\_12-13



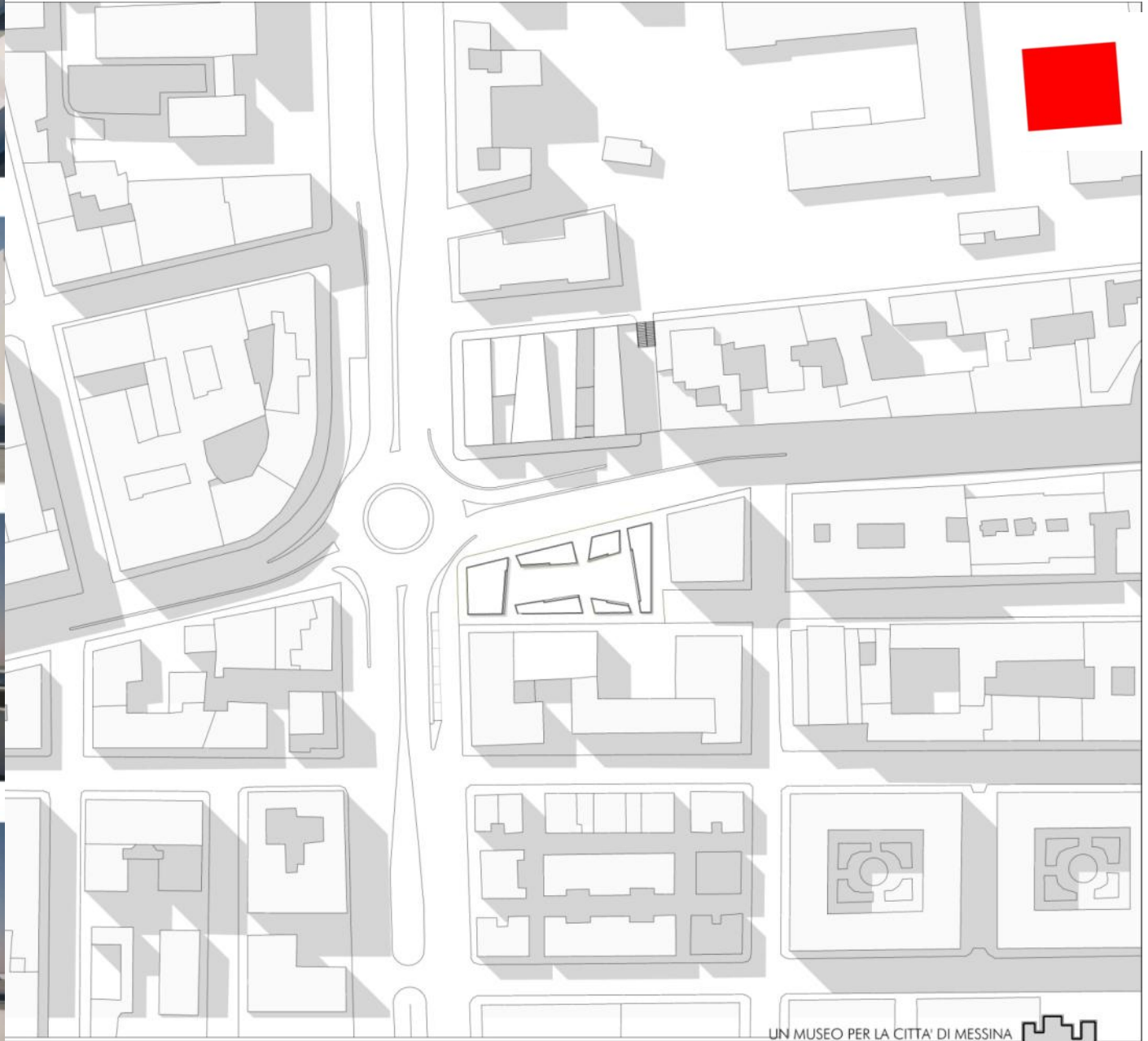
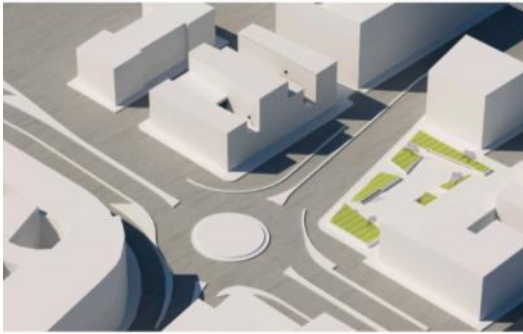


01\_edifici compatti  
Annalisa Varone\_12-13



# 01\_edifici compatti

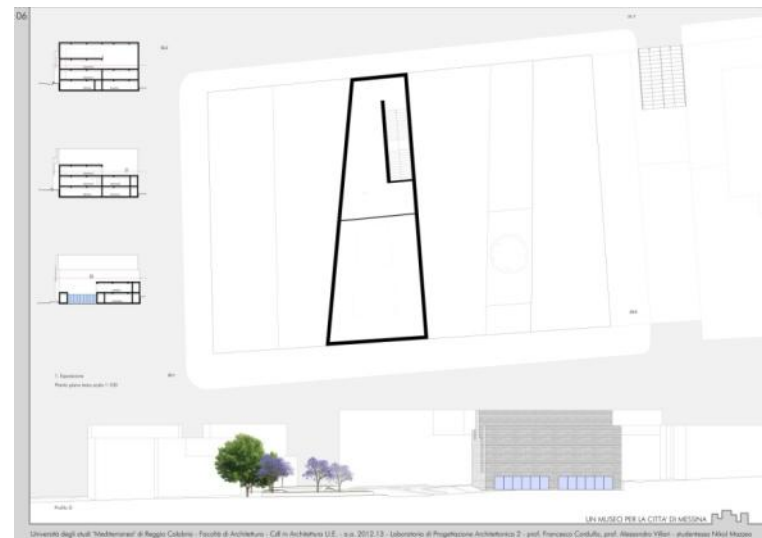
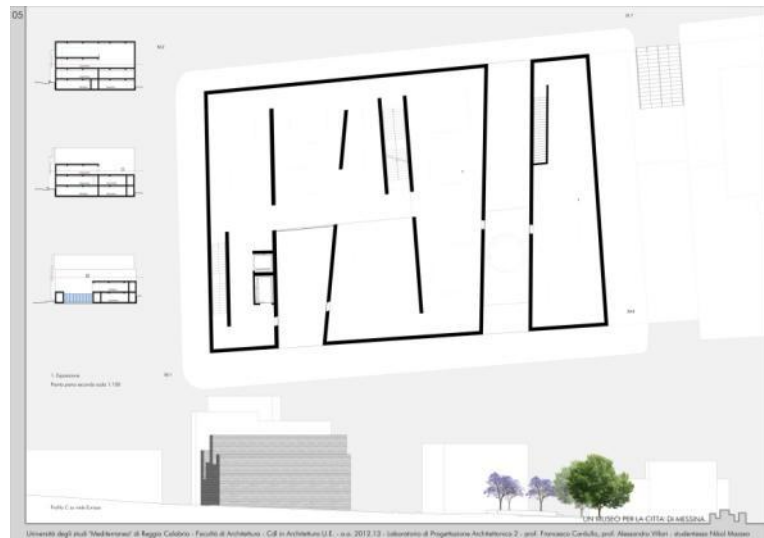
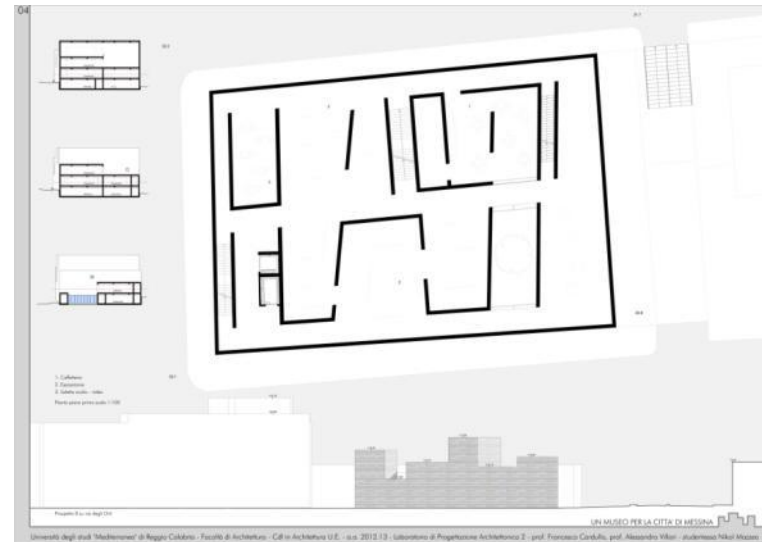
Nikol Mazzeo\_12-13

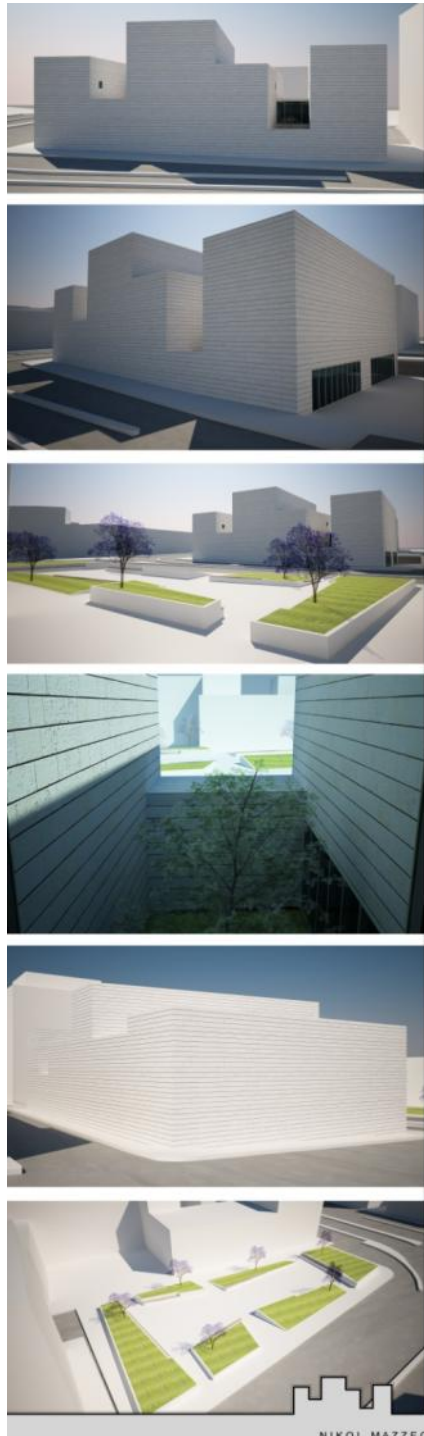


UN MUSEO PER LA CITTA' DI MESSINA

# 01\_edifici compatti

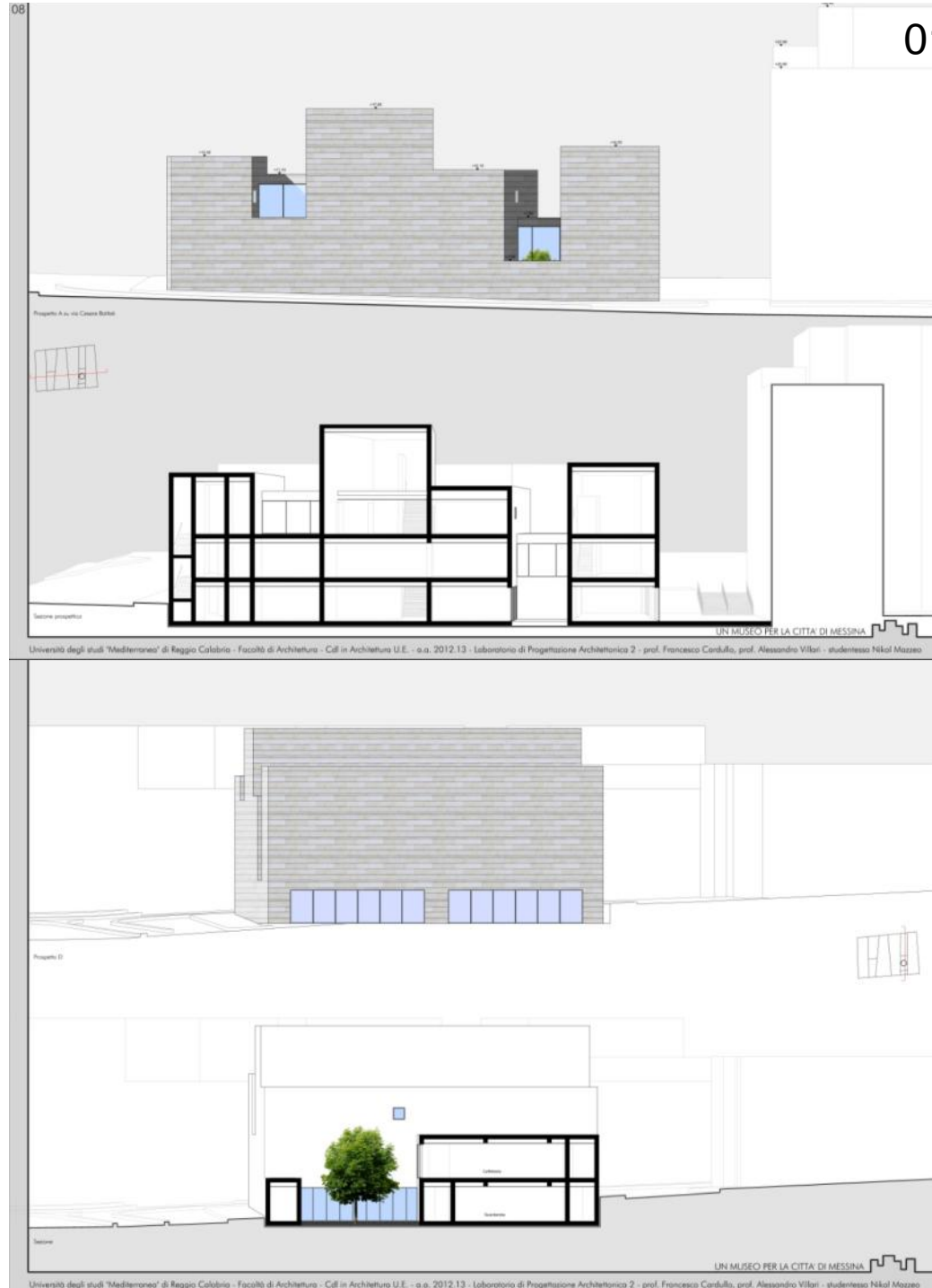
Nikol Mazzeo\_12-13





UN MUSEO PER LA CITTÀ DI MESSINA

NIKOL MAZZEO



01\_edifici compatti  
Nikol Mazzeo\_12-13



Università degli studi "Mediterranea" di Reggio Calabria - Facoltà di Architettura - Cdf in Architettura U.E. - a.a. 2012.13 - Laboratorio di Progettazione Architettonica 2 - prof. Francesco Cardullo, prof. Alessandro Villari - studente Nikol Mazzeo

UN MUSEO PER LA CITTÀ DI MESSINA

Università degli studi "Mediterranea" di Reggio Calabria - Facoltà di Architettura - Cdf in Architettura U.E. - a.a. 2012.13 - Laboratorio di Progettazione Architettonica 2 - prof. Francesco Cardullo, prof. Alessandro Villari - studente Nikol Mazzeo



# 01\_edifici compatti

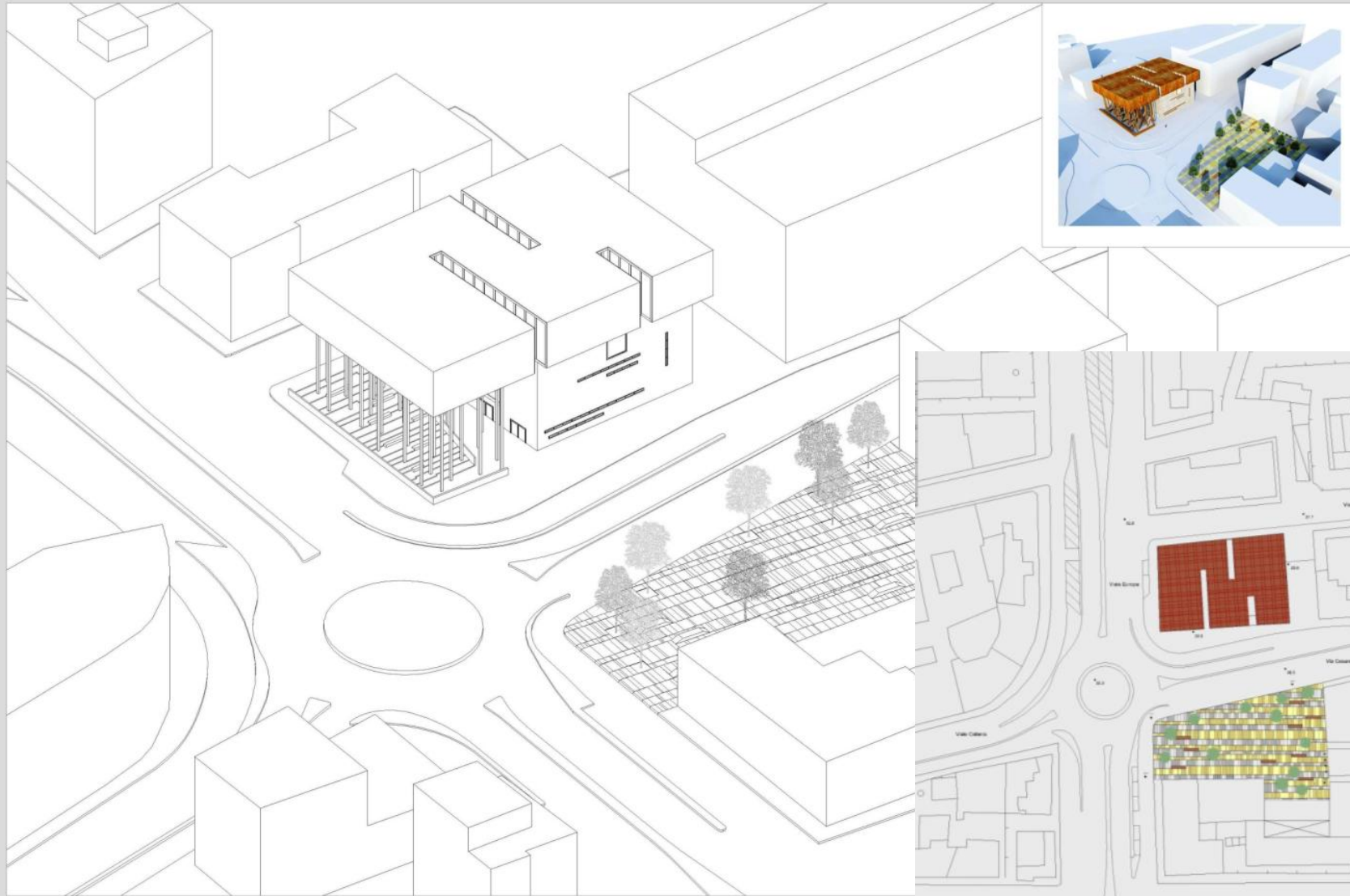
## Andreas Mungo\_12-13

03

Università degli studi Mediterranea di Reggio Calabria - Facoltà di Architettura - Anno accademico 2012 / 2013 - Laboratorio di Progettazione architettonica 2  
Prof. Francesco Cardullo - Prof. Alessandro Villari - Coll. Arch. Francesca Faro - Ing. Edoardo Caminli

Assonometria monometrica 30°, 60° - 1:200

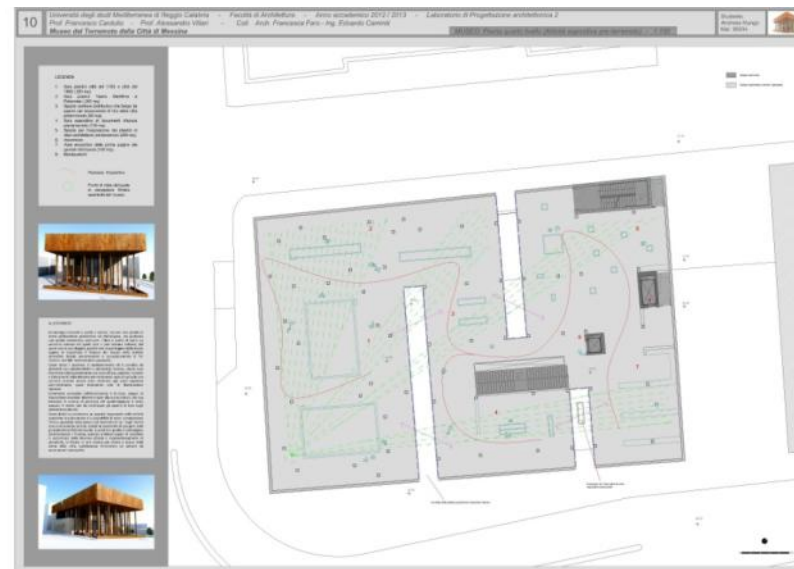
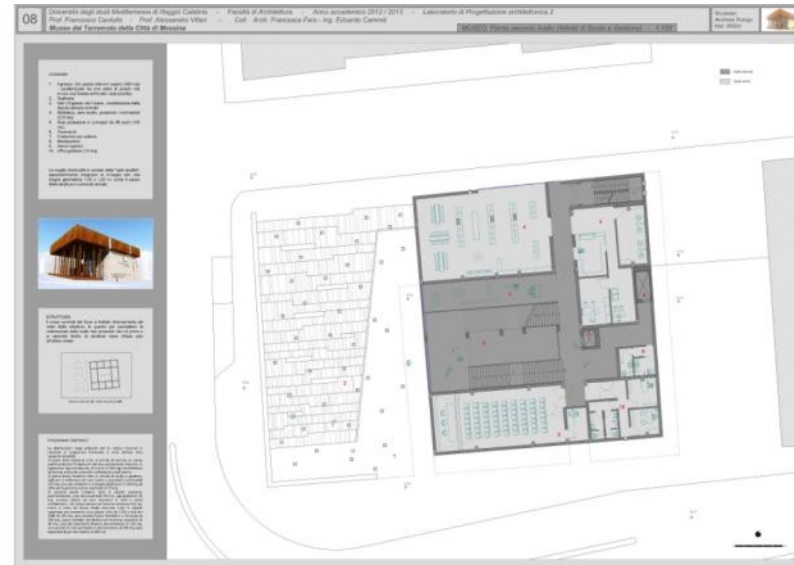
Studente:  
Andreas Mungo  
Mat. 956934



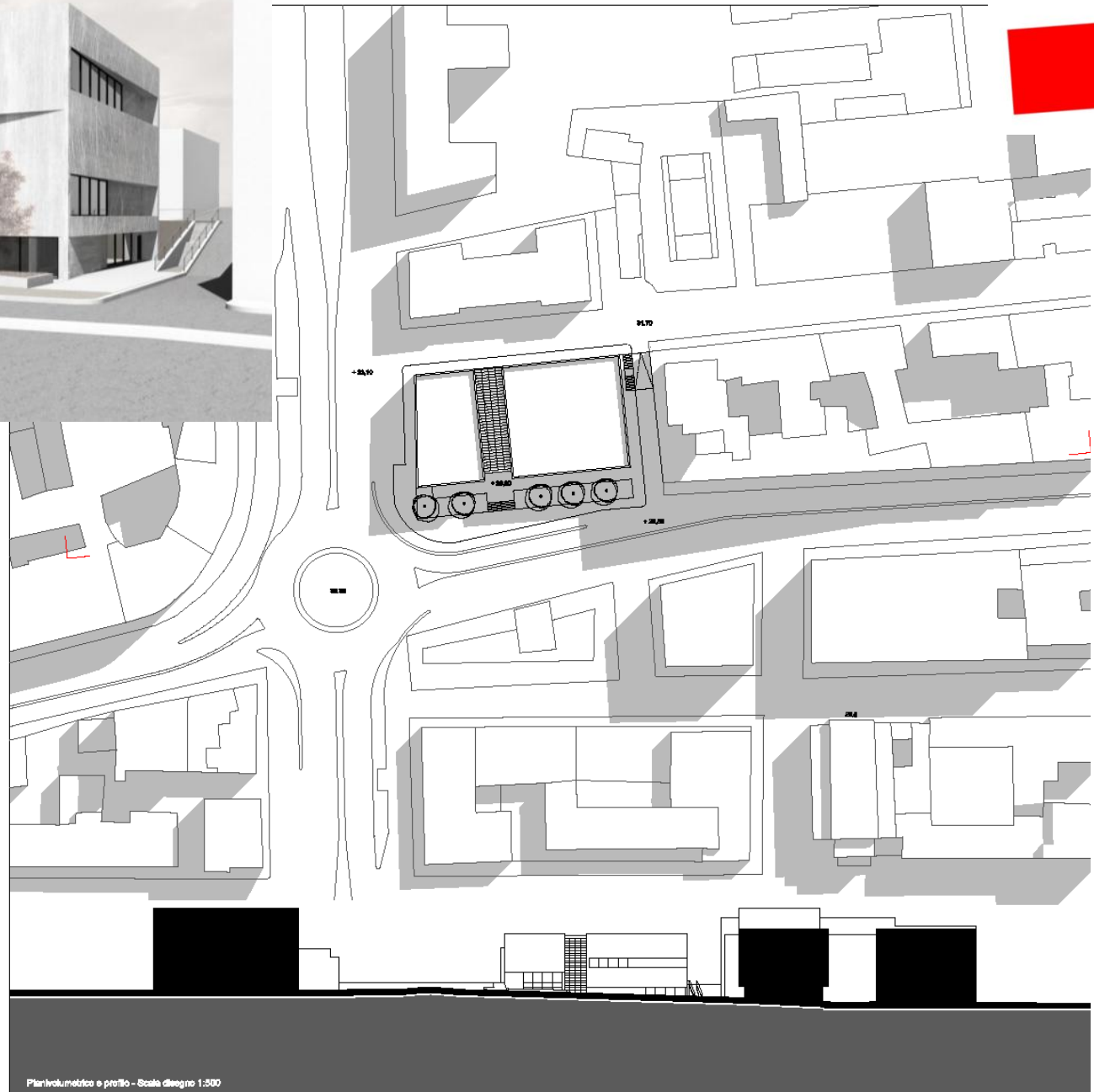


# 01\_edifici compatti

## Andreas Mungo\_12-13

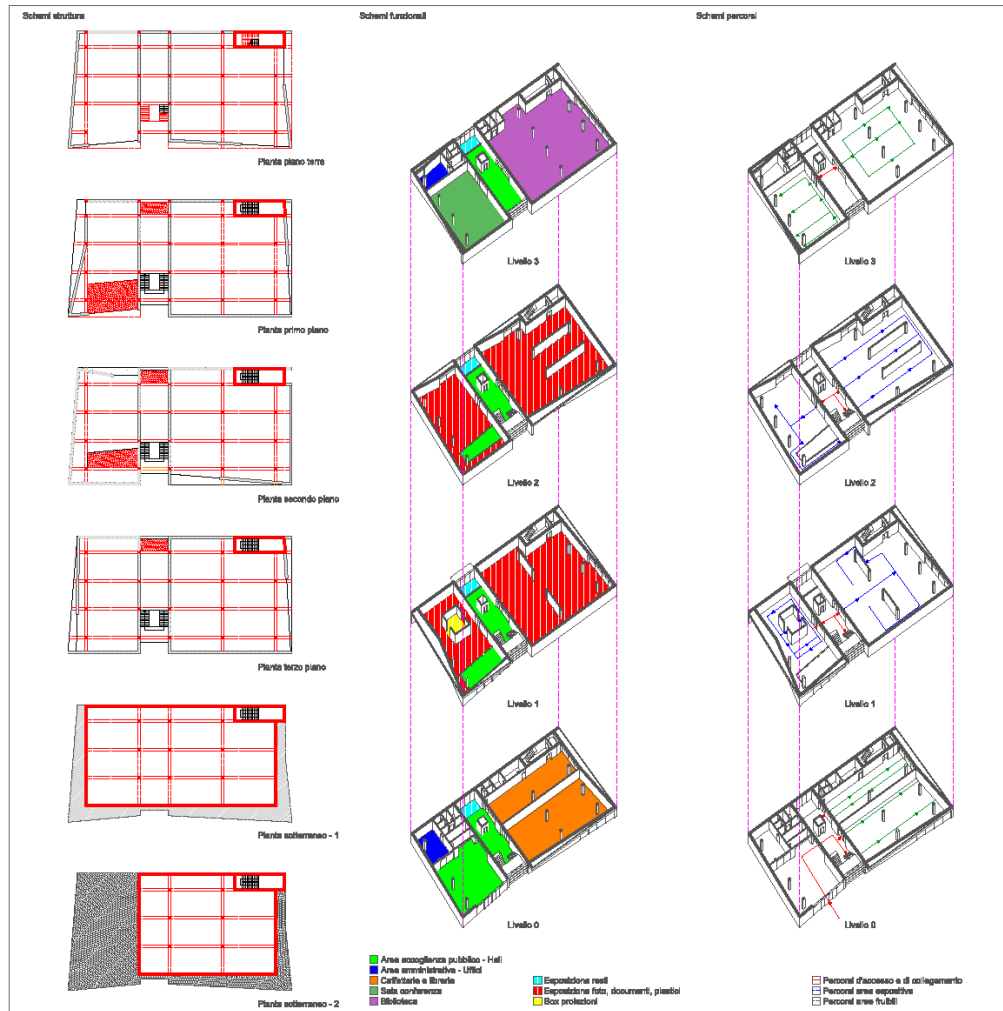


01\_edifici compatti  
Antonella Stanganelli\_12-13



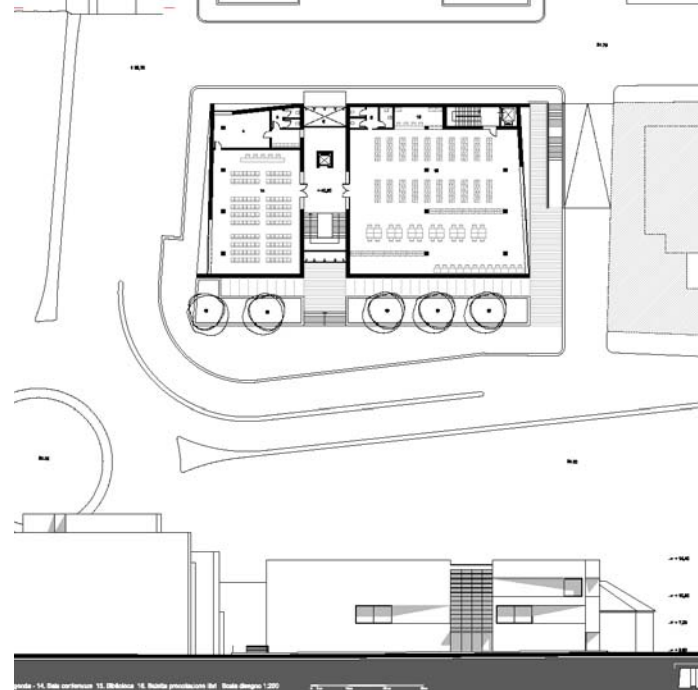
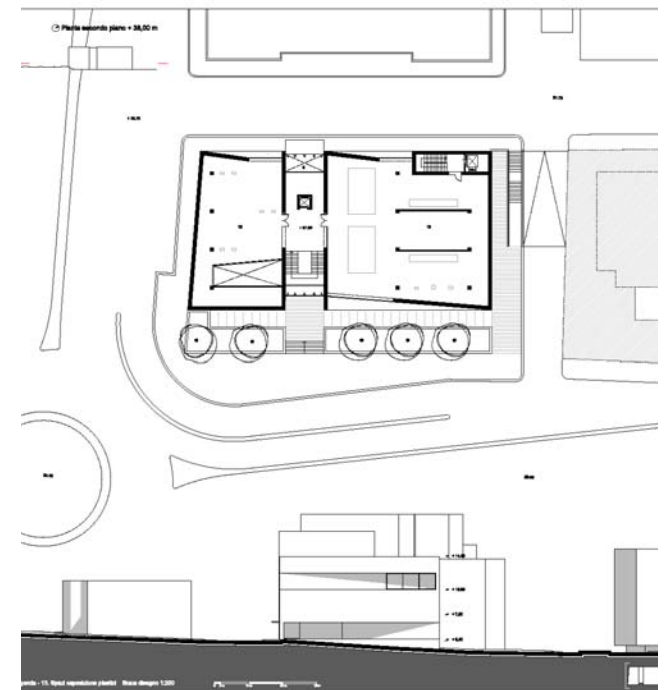
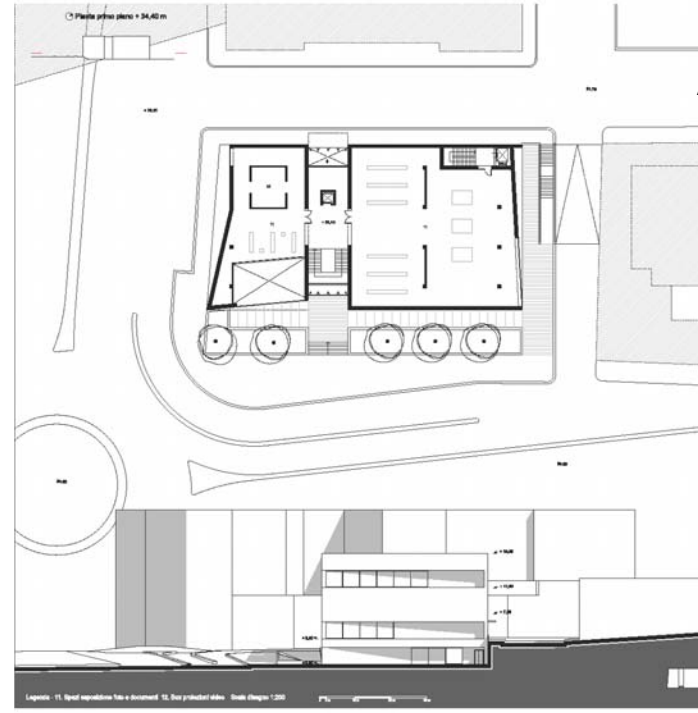
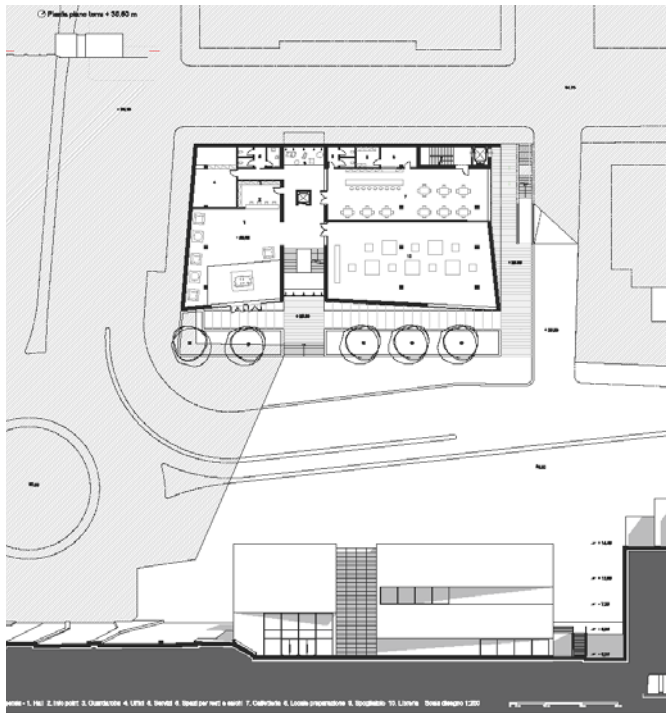
# 01\_edifici compatti

Antonella Stanganelli\_12-13

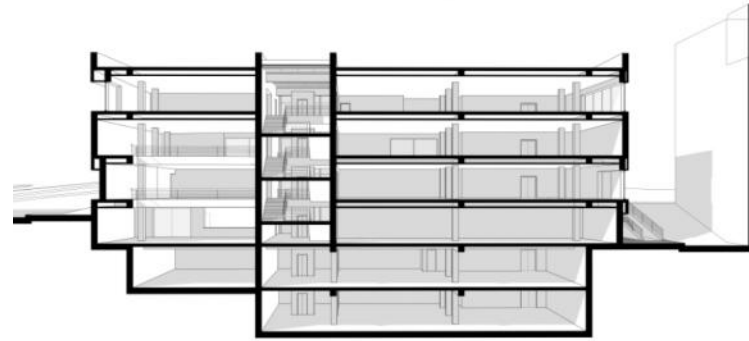
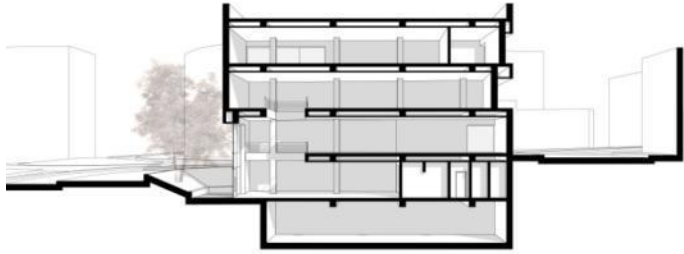


# 01\_edifici compatti

Antonella Stanganelli\_12-13



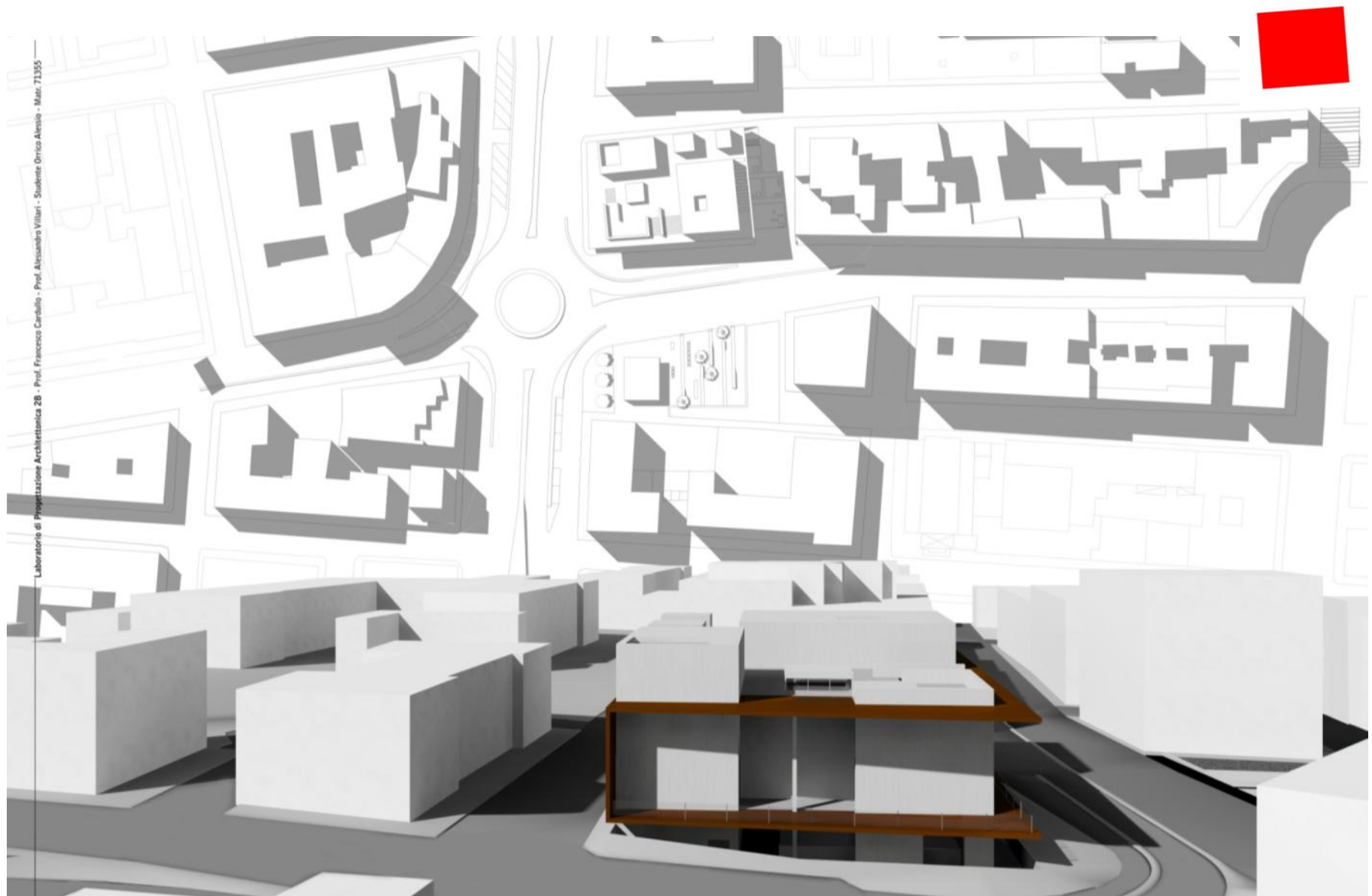
01\_edifici compatti  
Antonella Stanganelli\_12-13





# 01\_edifici compatti

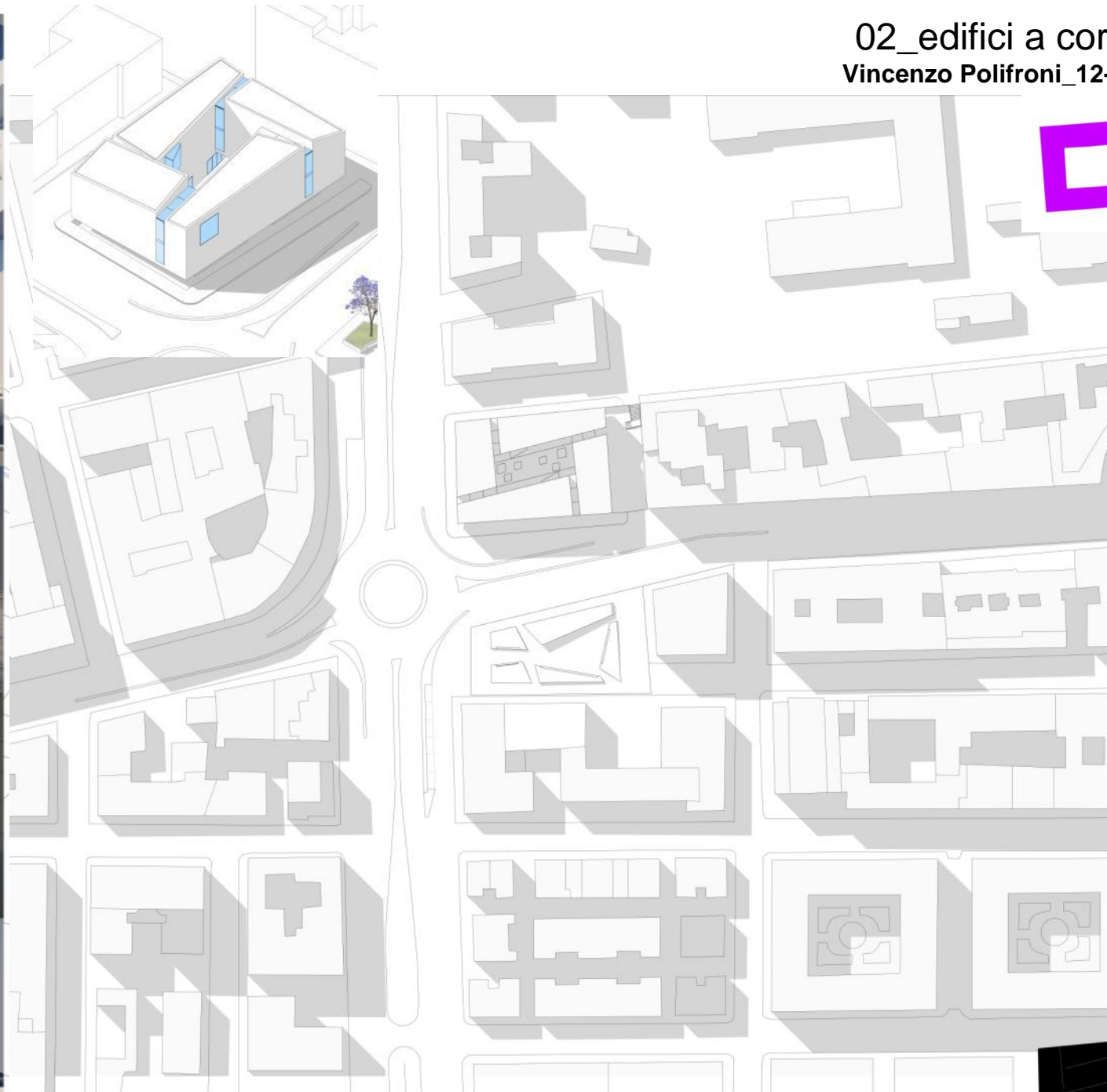
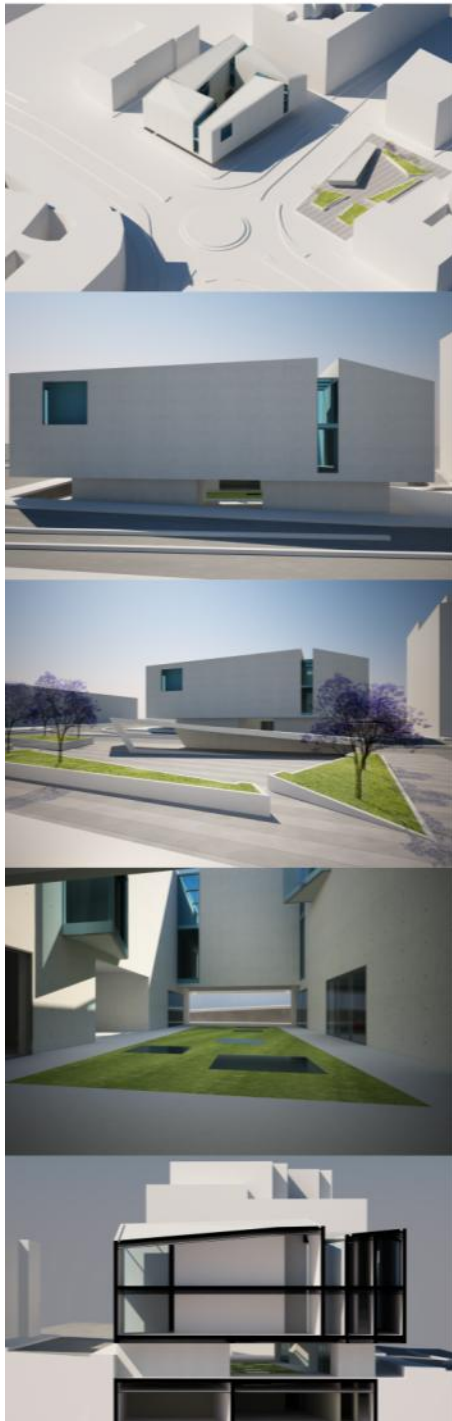
Alessio Orrico\_12-13





# 02\_edifici a corte

## Vincenzo Polifroni\_12-13



# 02\_edifici a corte

## Vincenzo Polifroni\_12-13

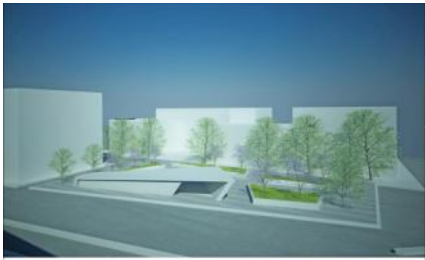


# 02\_edifici a corte Vincenzo Polifroni\_12-13



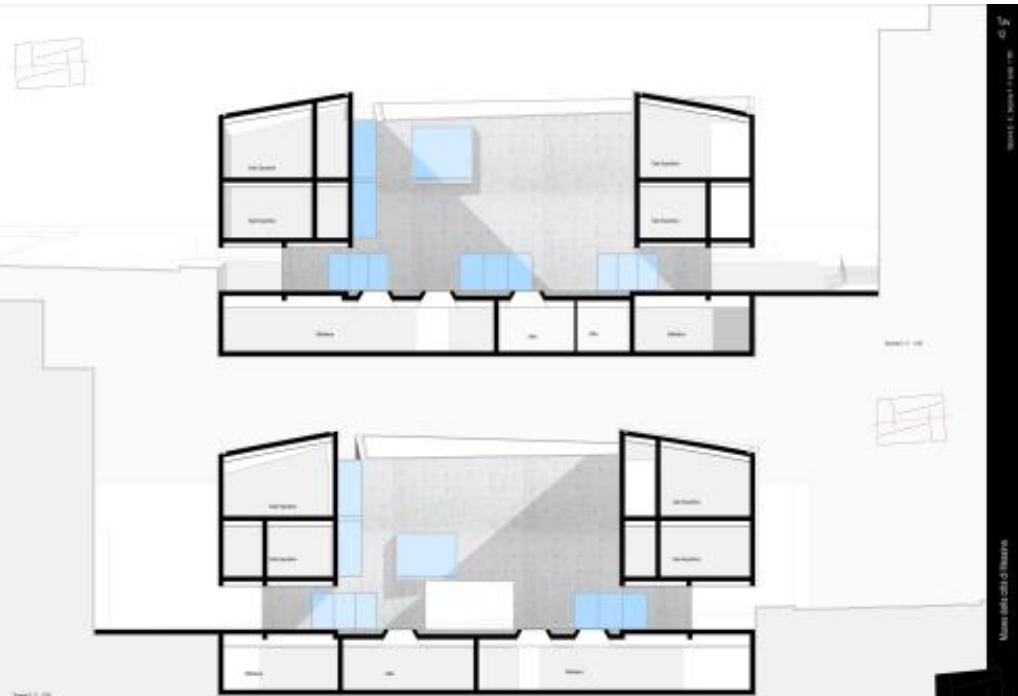
Museo della città di Messina

Museo della città di Messina



studente: Vincenzo Polifroni

studente: Vincenzo Polifroni



Museo della città di Messina

studente: Vincenzo Polifroni

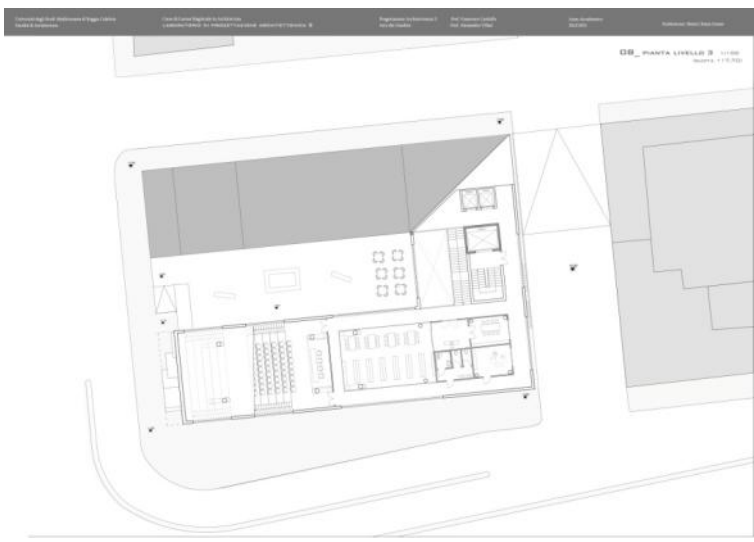
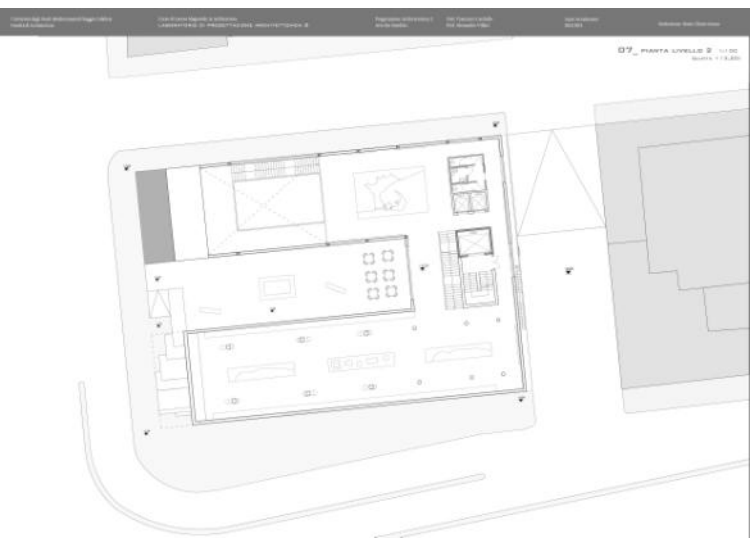
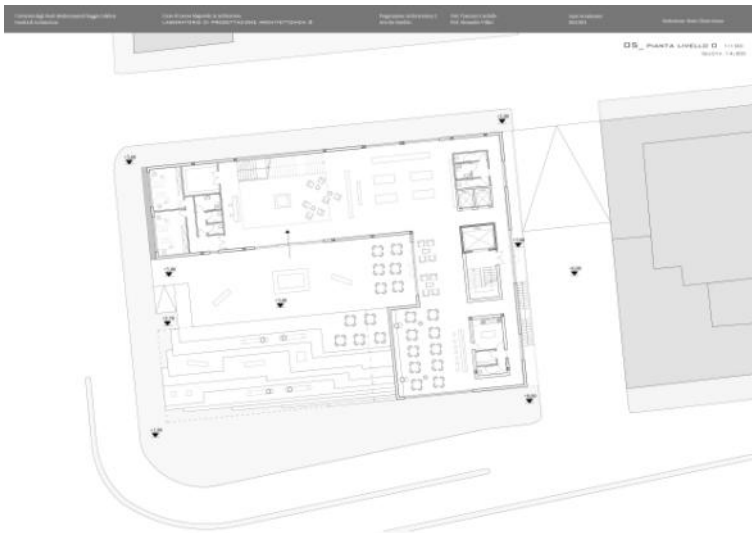


02\_edifici a corte  
Maria Cristina Grasso\_12-13



# 02\_edifici a corte

Maria Cristina Grasso\_12-13



# 02\_edifici a corte Maria Cristina Grasso\_12-13

Università degli Studi Mediterranea di Reggio Calabria  
Facoltà di Architettura

Corso di Laurea Magistrale in Architettura  
LABORATORIO DI PROGETTAZIONE ARCHITETTONICA 2

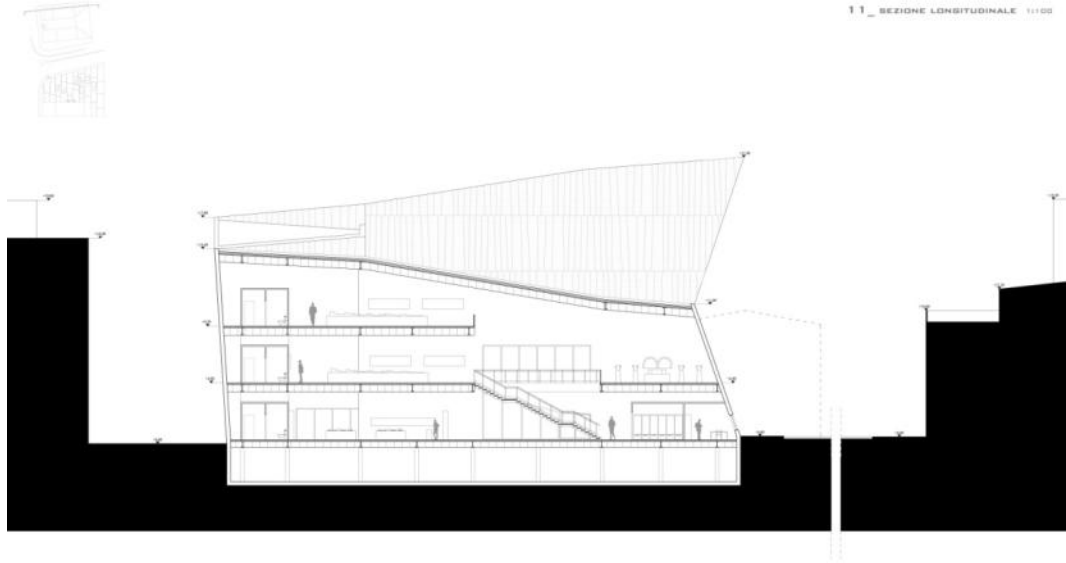
Progettazione Architettonica 2  
Area di Costruzione

Prof. Francesco Carullo  
Prof. Alessandra Vitari

Anno Accademico  
2012/2013

Edificatore: Maria Cristina Grasso

11\_ SEZIONE LONGITUDINALE 1:1100



Università degli Studi Mediterranea di Reggio Calabria  
Facoltà di Architettura

Corso di Laurea Magistrale in Architettura  
LABORATORIO DI PROGETTAZIONE ARCHITETTONICA 2

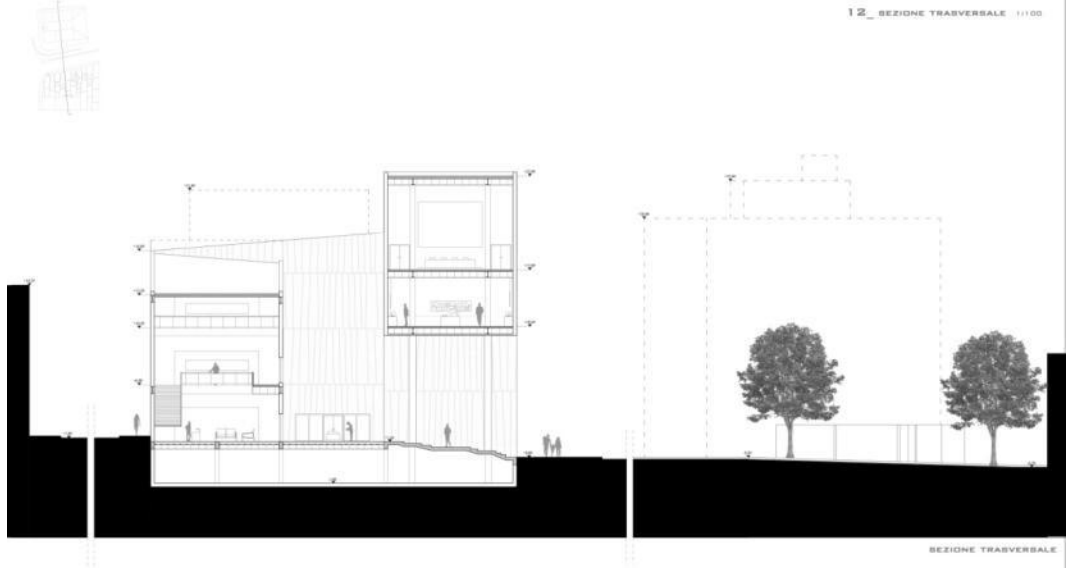
Progettazione Architettonica 2  
Area di Costruzione

Prof. Francesco Carullo  
Prof. Alessandra Vitari

Anno Accademico  
2012/2013

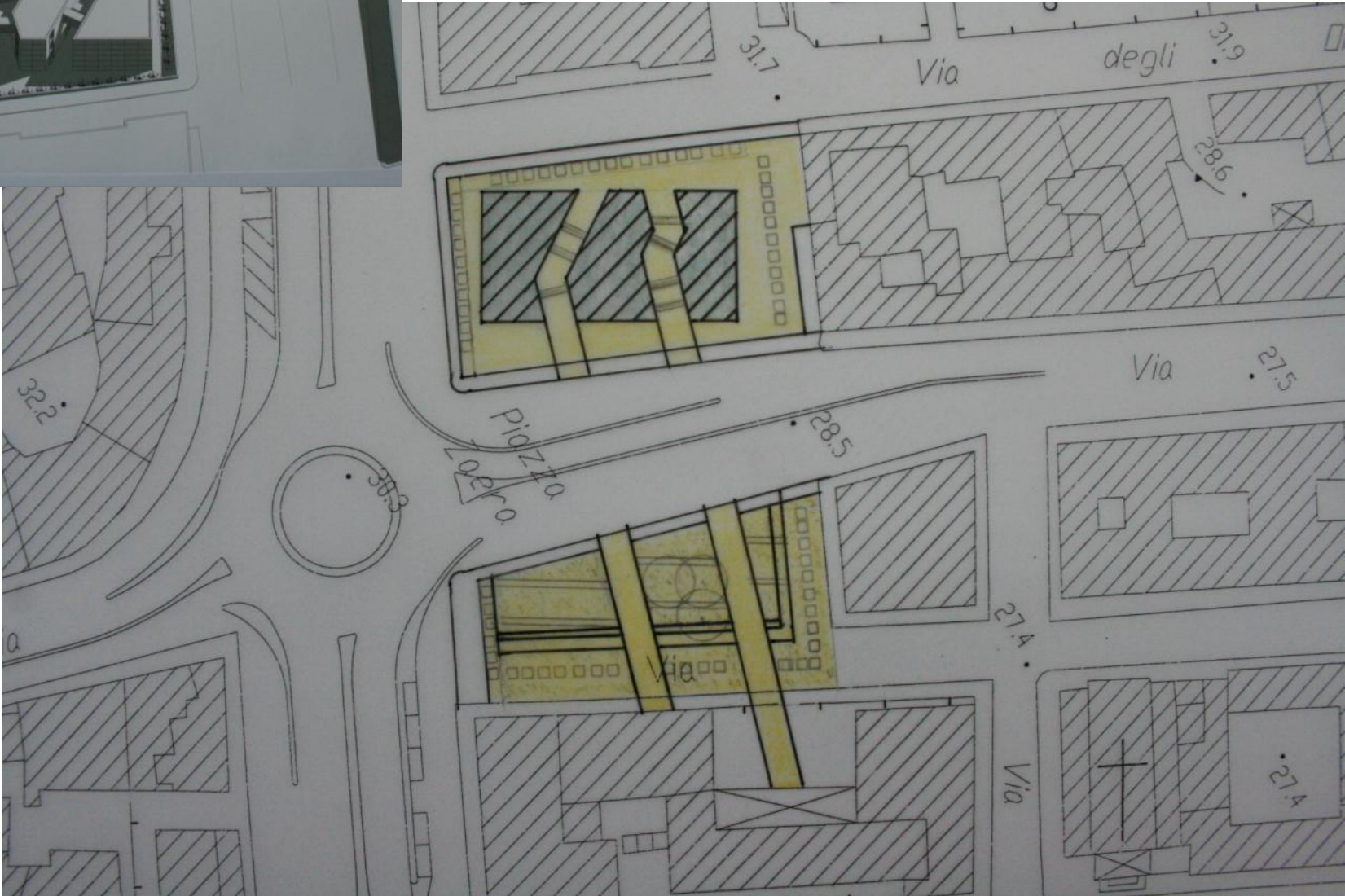
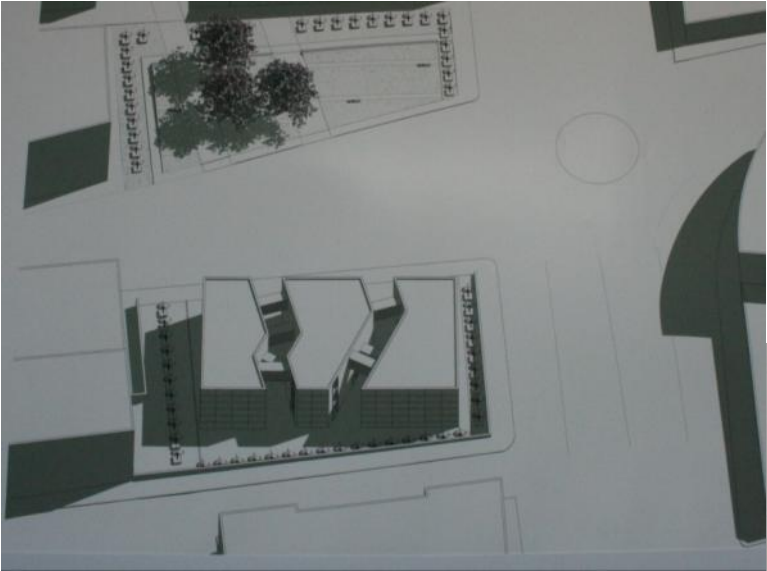
Edificatore: Maria Cristina Grasso

12\_ SEZIONE TRASVERSALE 1:1100



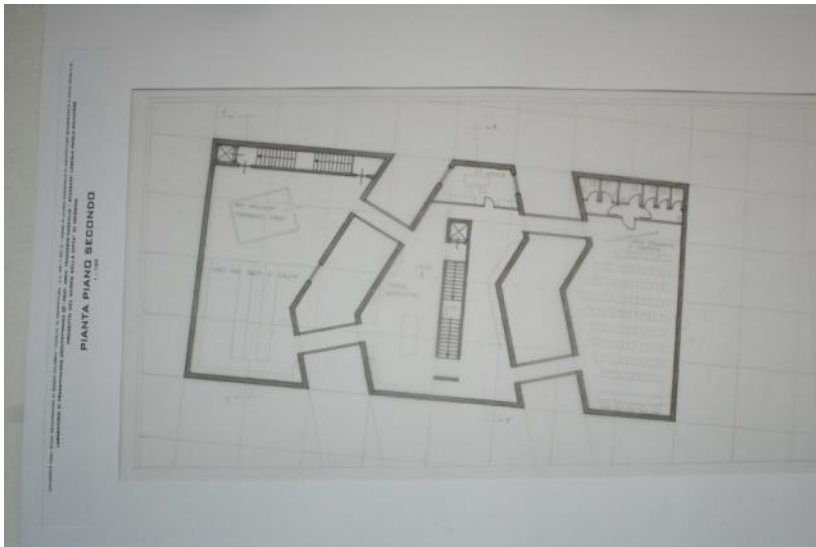
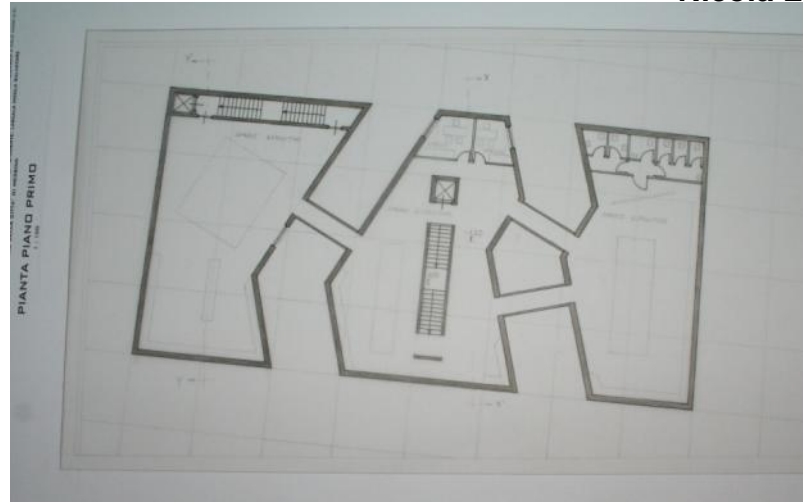
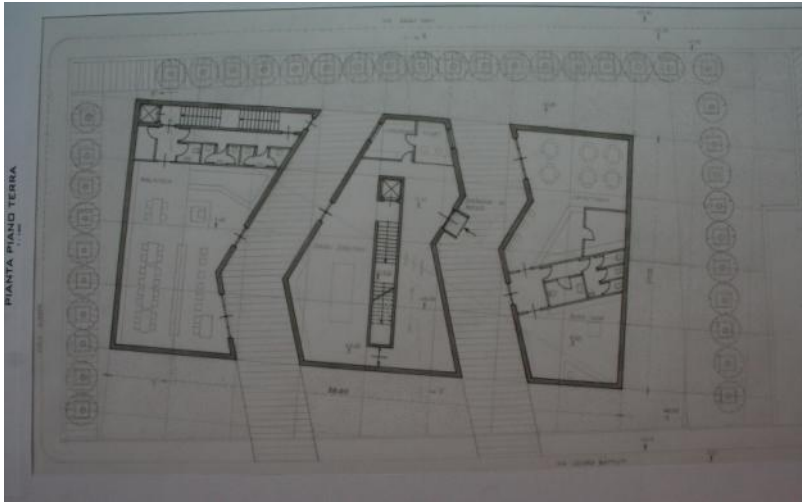
SEZIONE TRASVERSALE

02\_edifici a corte  
Nicola La Scala\_11-12

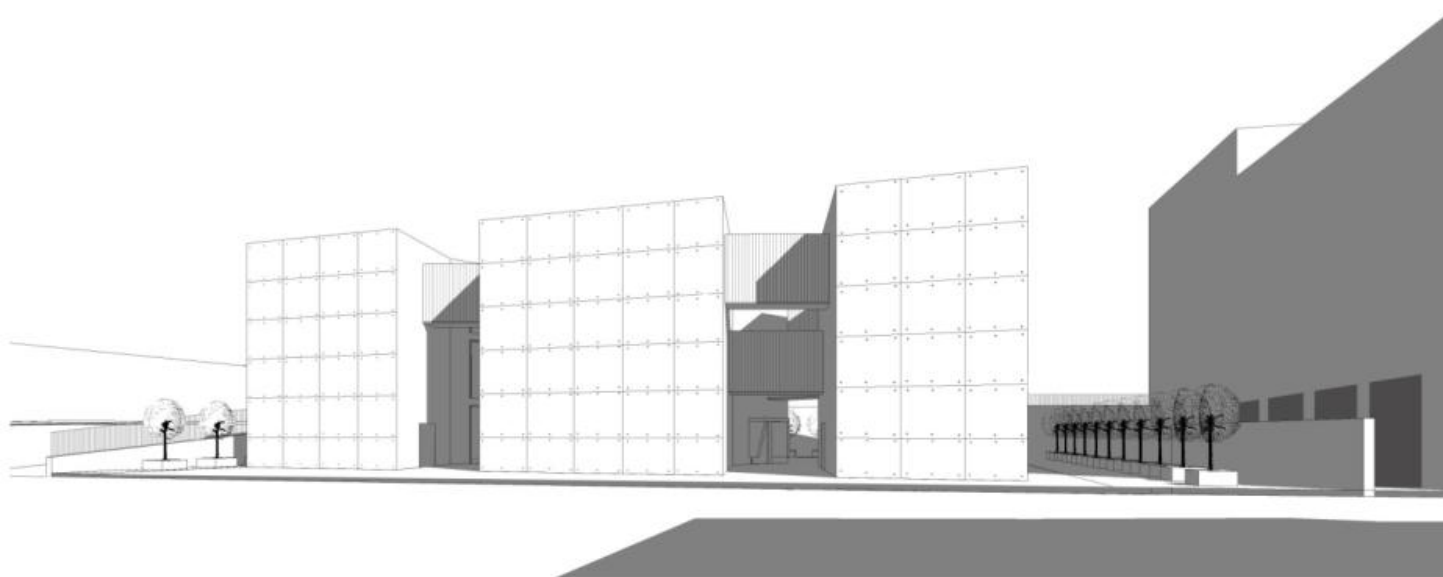




02\_edifici a corte  
Nicola La Scala\_11-12



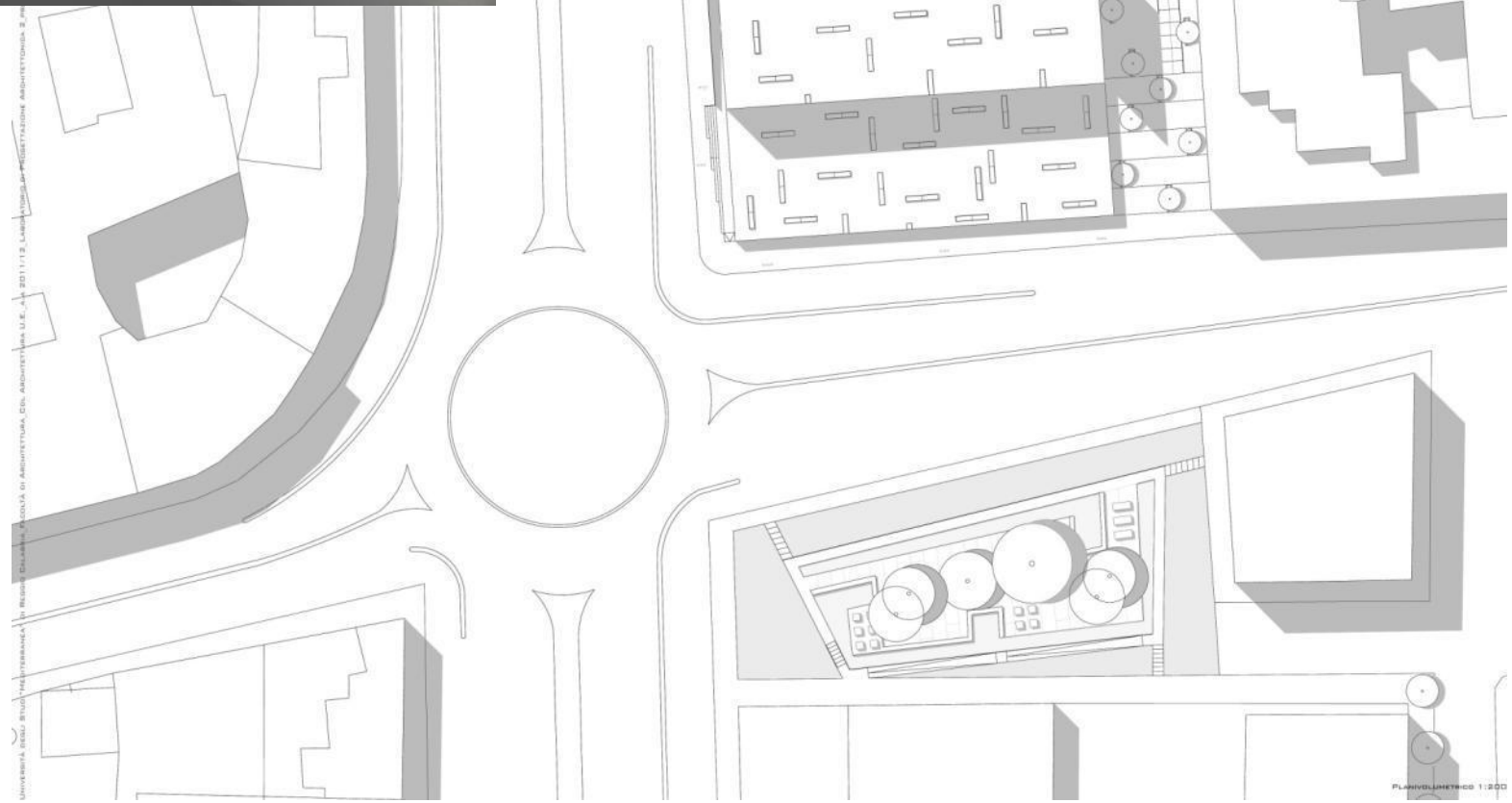
02\_edifici a corte  
Nicola La Scala\_11-12





# 03\_edifici lineari

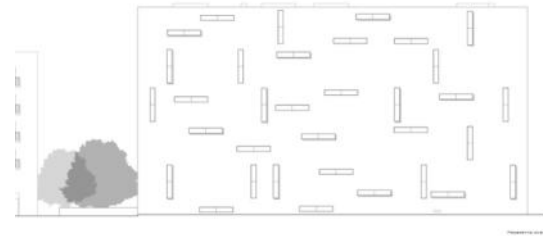
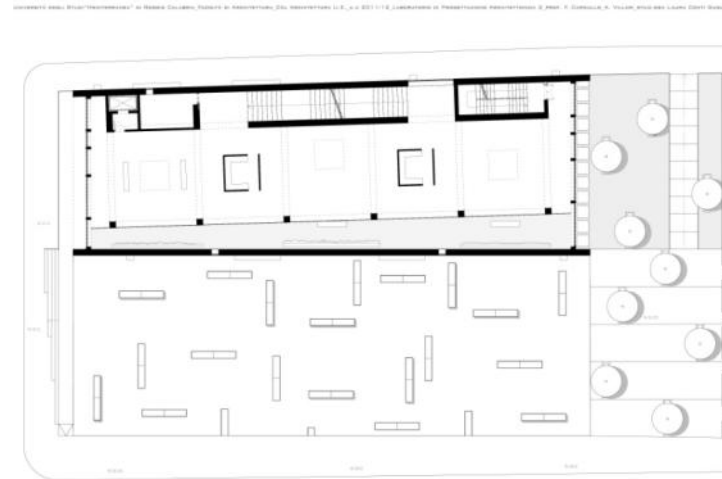
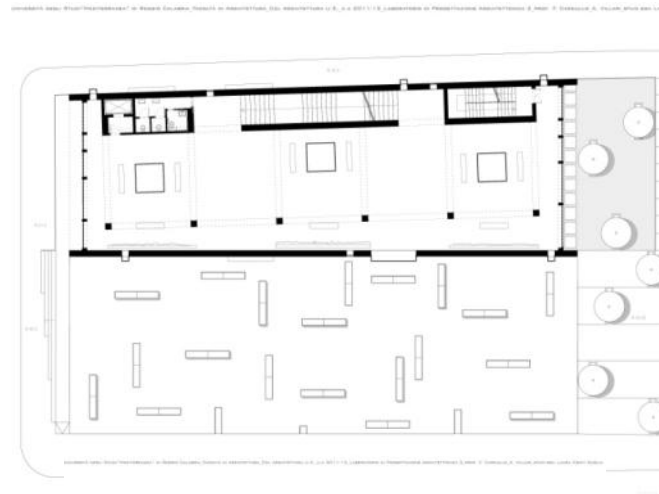
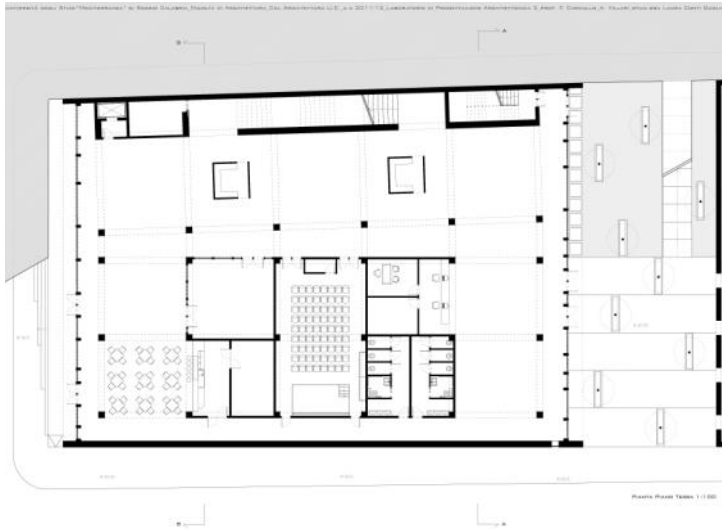
Laura Conti Guglia\_11-12



UNIVERSITÀ DEGLI STUDI "MAGGIORANICA" IN REGIONE CALABRA - FACOLTÀ DI ARCHITETTURA, EDILIZIA ARCHITETTURA U.E. - A.A. 2011/12 - LABORATORIO DI PROGETTAZIONE ARCHITETTURA 2 - 1° ANNO

# 03\_edifici lineari

Laura Conti Guglia\_11-12

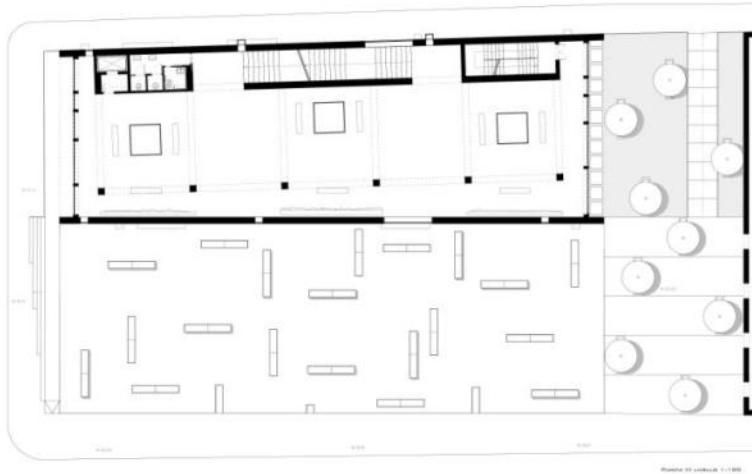


# 03\_edifici lineari

Laura Conti Guglia\_11-12

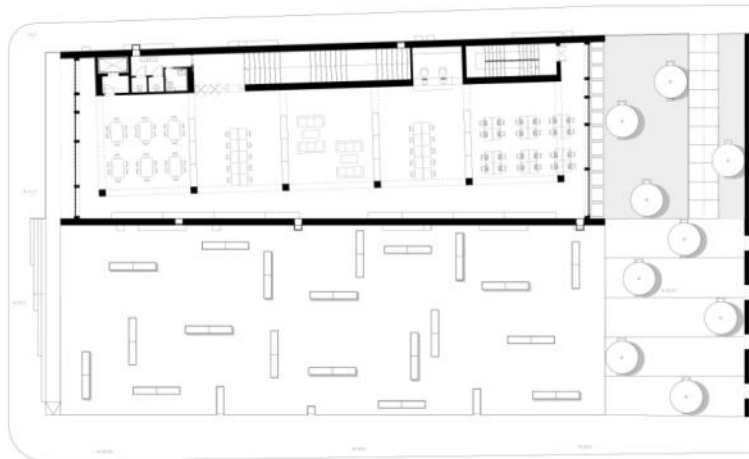


LABORATORIO DI PROGETTAZIONE ARCHITETTICA 2, PROF. F. CARULLO, A. VALLI, PIAZZA DEL LAVORO 2001 TORINO



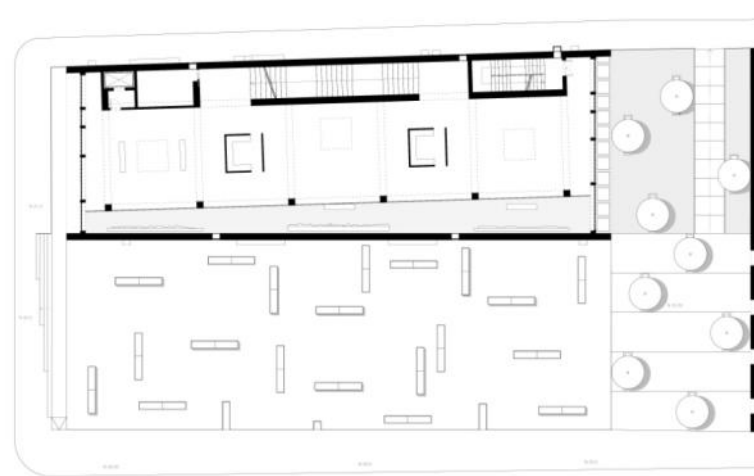
PIANTA IV LIVELLO 1:100

LABORATORIO DI PROGETTAZIONE ARCHITETTICA 2, PROF. F. CARULLO, A. VALLI, PIAZZA DEL LAVORO 2001 TORINO



PIANTA V LIVELLO 1:100

LABORATORIO DI PROGETTAZIONE ARCHITETTICA 2, PROF. F. CARULLO, A. VALLI, PIAZZA DEL LAVORO 2001 TORINO

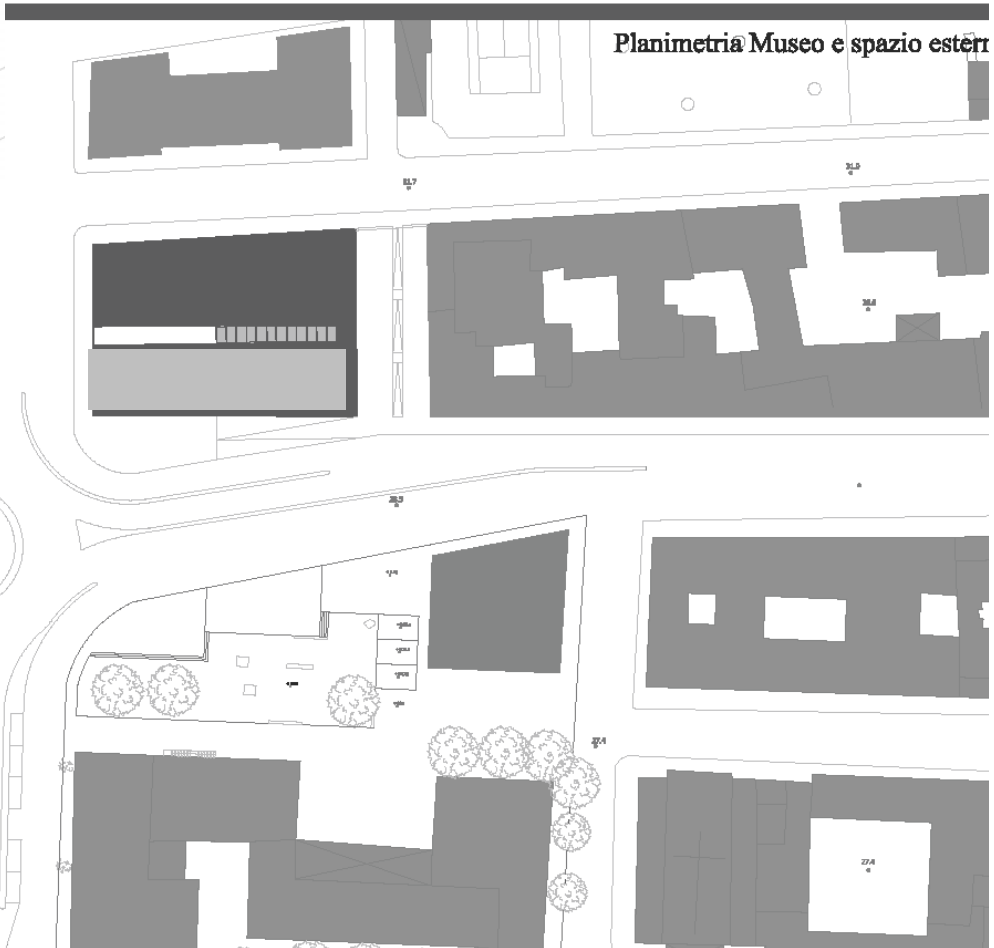
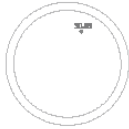
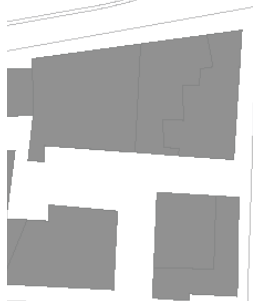
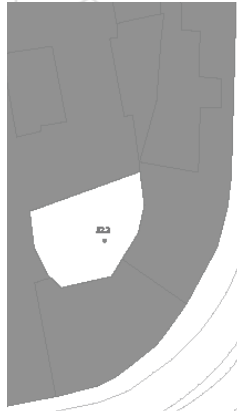
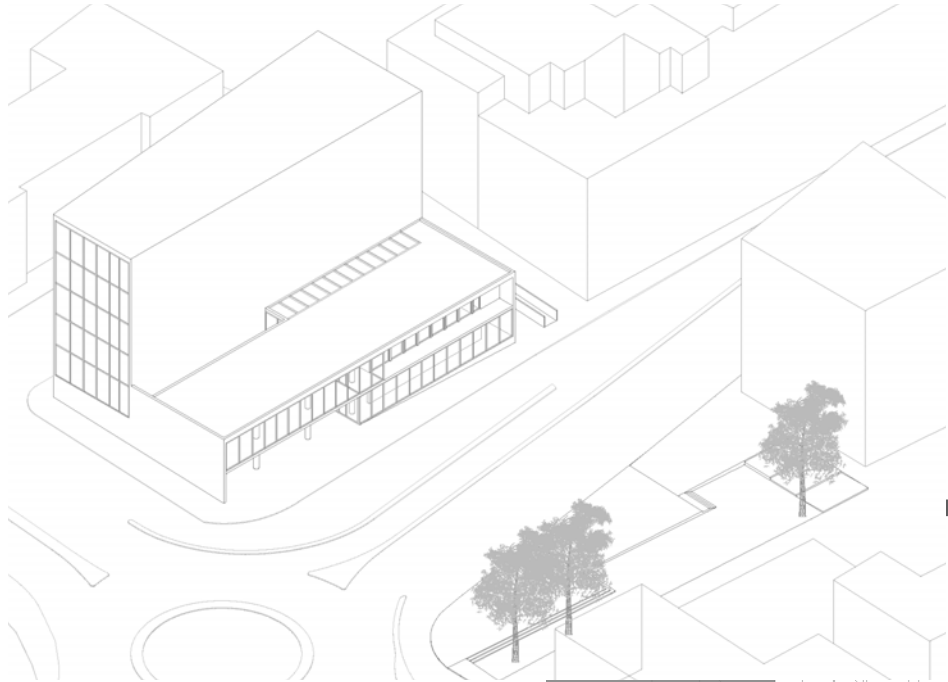


PIANTA IV LIVELLO 1:100



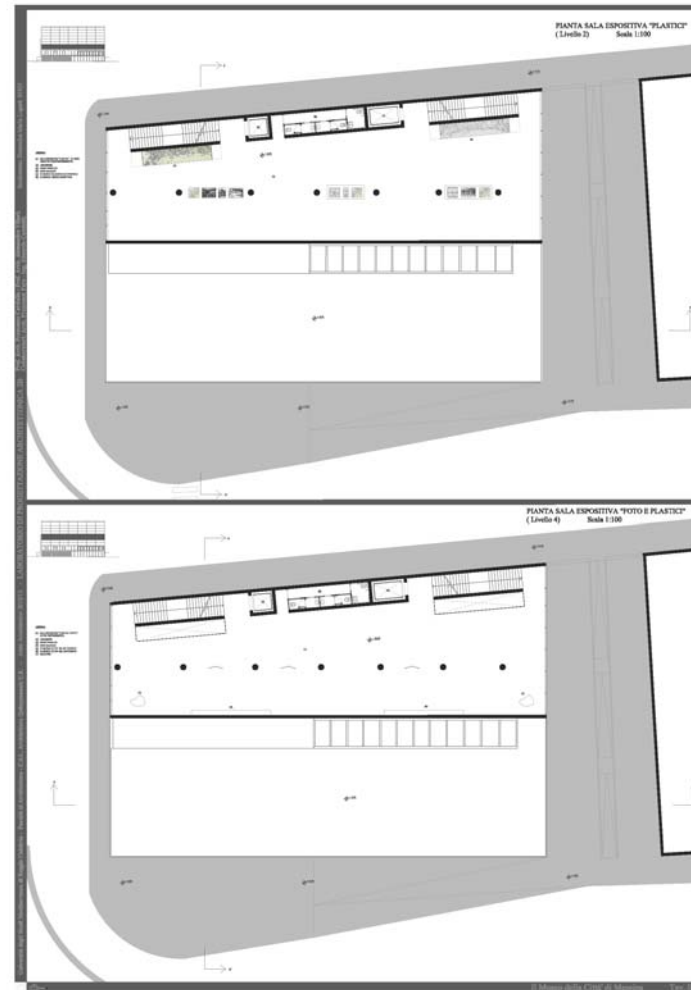
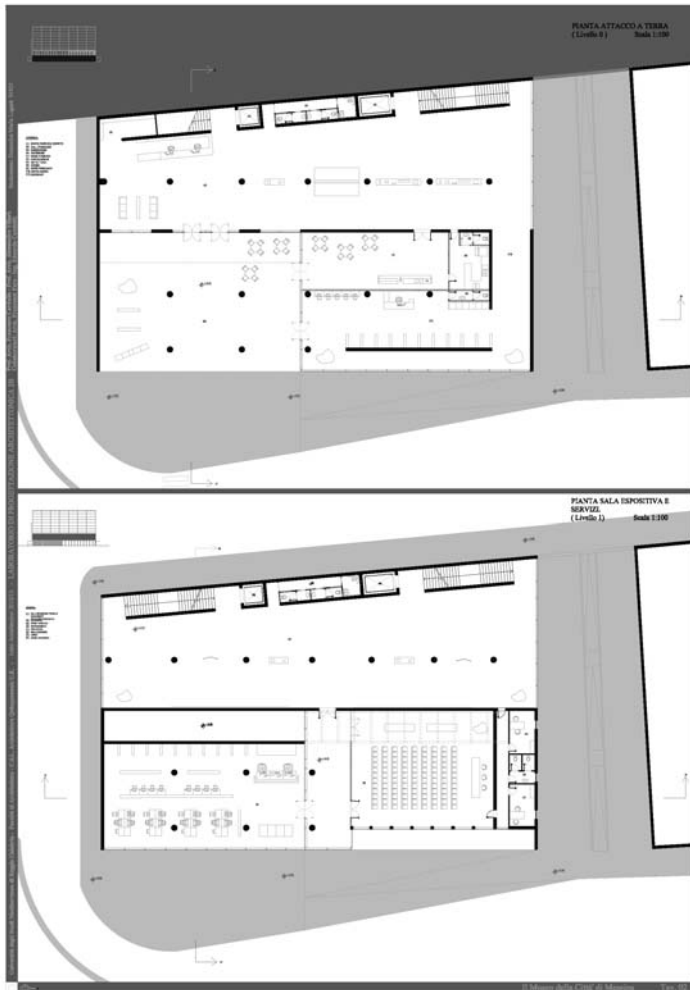
# 03\_edifici lineari

Domenica Lugarà\_12-13



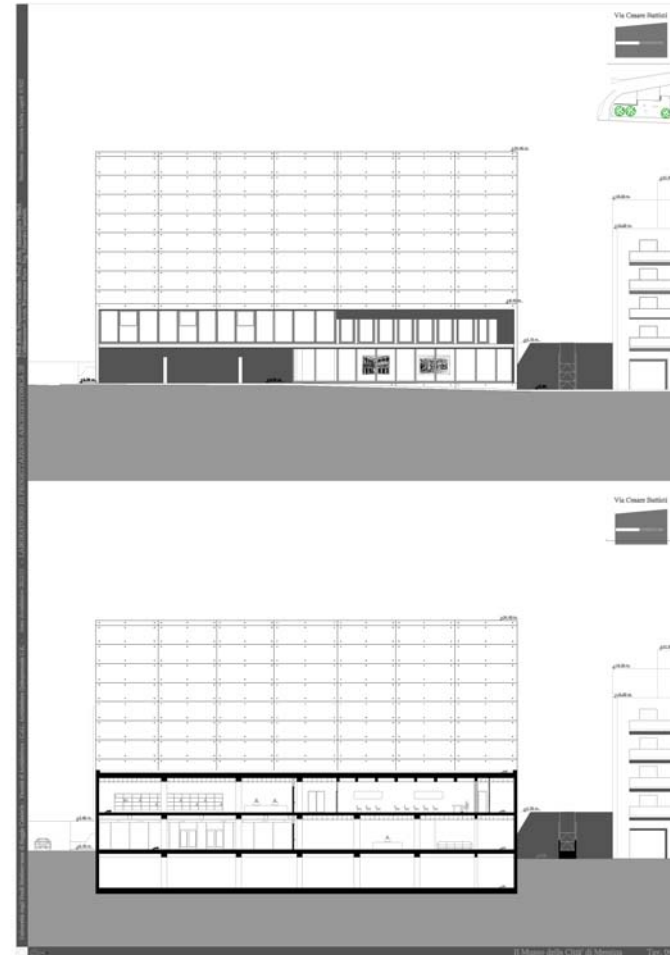
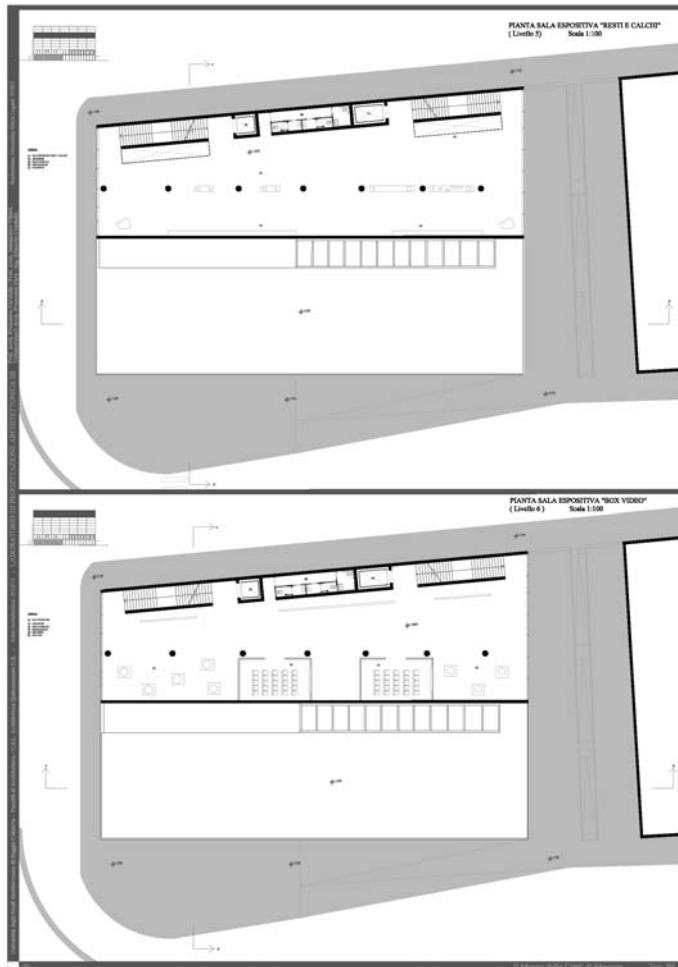
# 03\_edifici lineari

Domenica Lugarà\_12-13



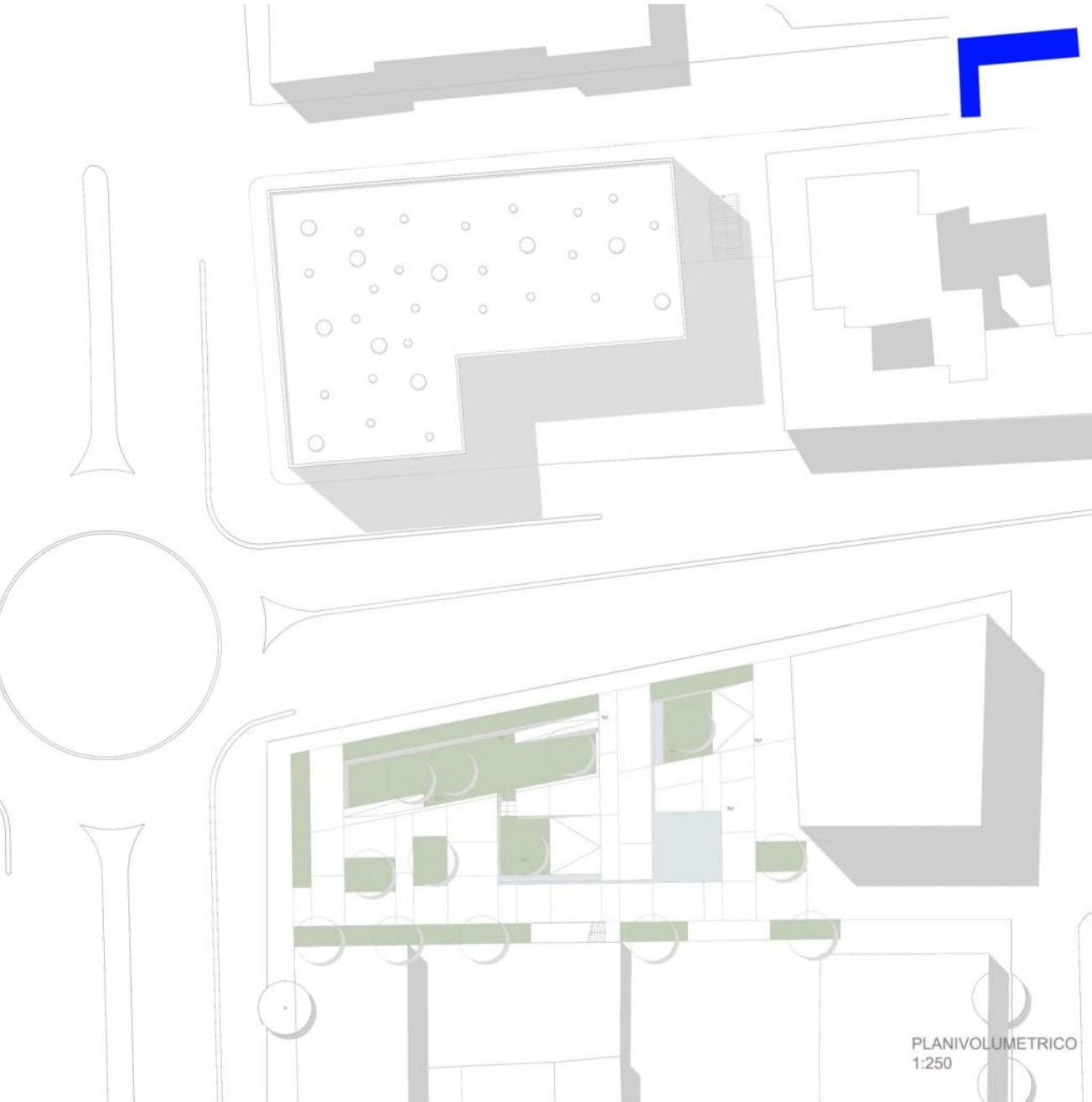
# 03\_edifici lineari

## Domenica Lugarà\_12-13



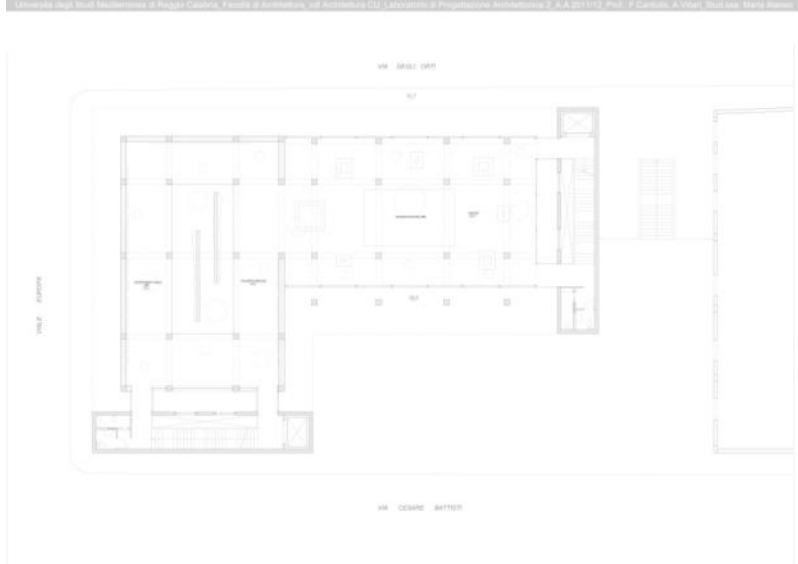
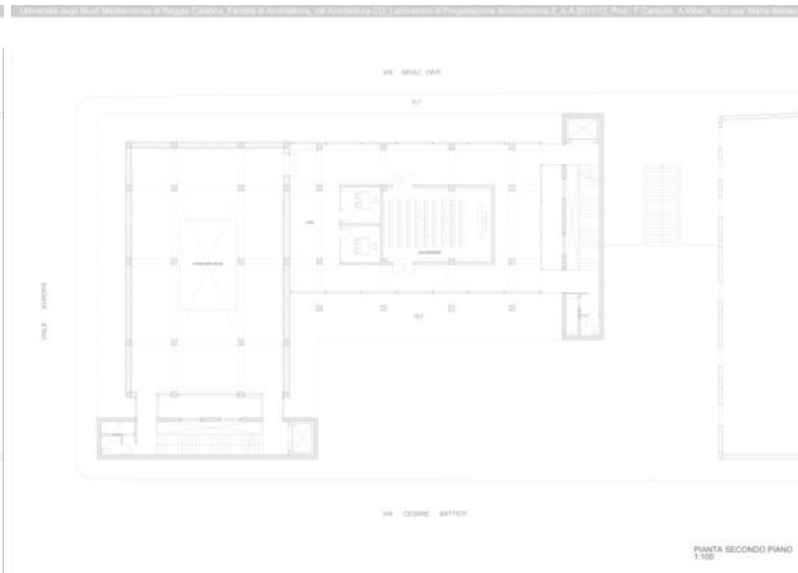
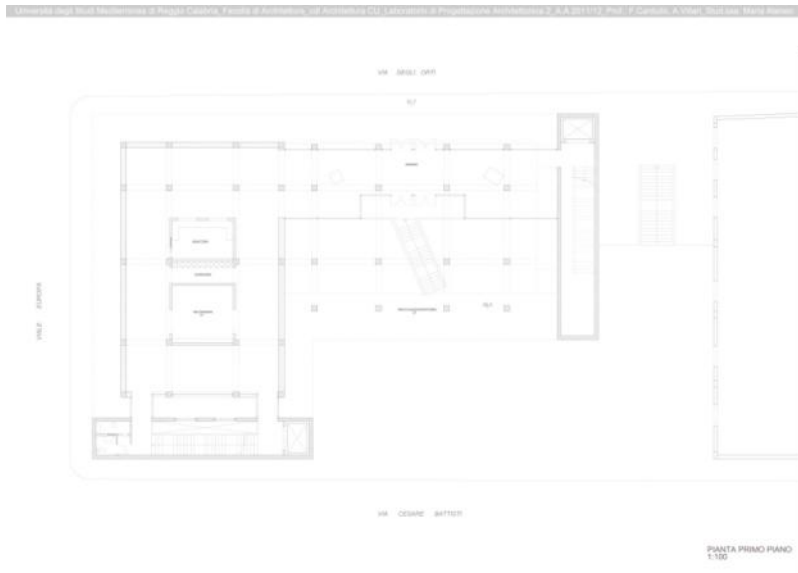


04\_combinazione di linee  
Maria Ateneo\_11-12

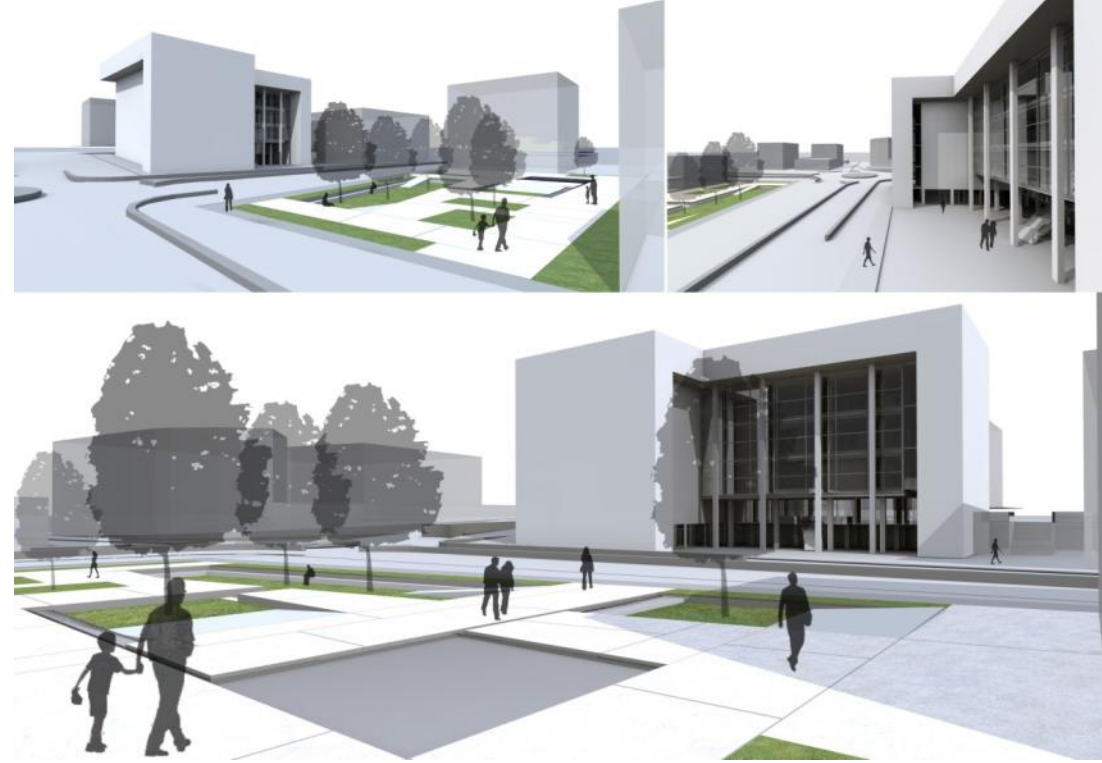


PLANIVOLUMETRICO  
1:250

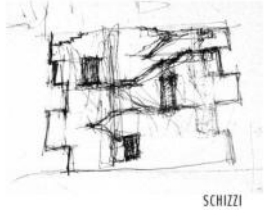
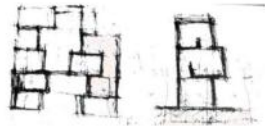
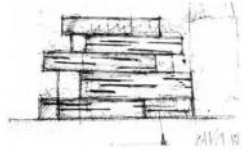
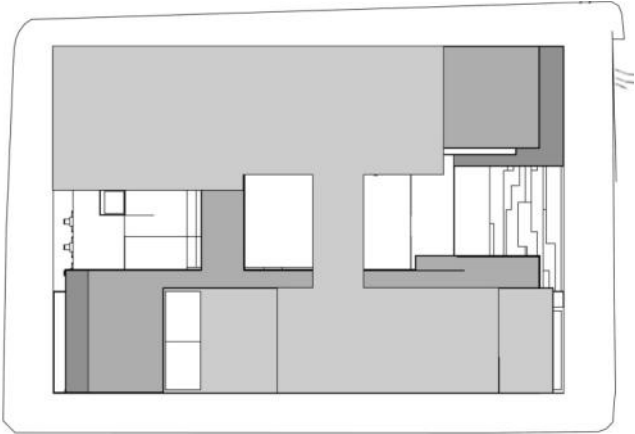
# 04\_combinazione di linee Maria Ateneo\_11-12



# 04\_combinazione di linee Maria Ateneo\_11-12



04\_combinazione di linee  
Miguel Angel Millan\_12-13

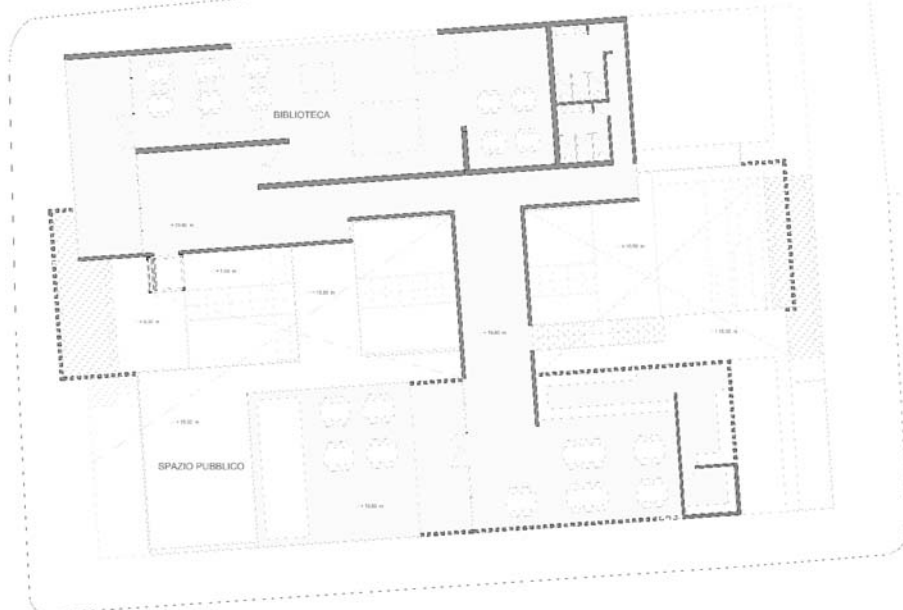






MUSEO DEL TERREMOTO  
MIGUEL\_ANGEL\_MILLAN\_GARCIA

6/6



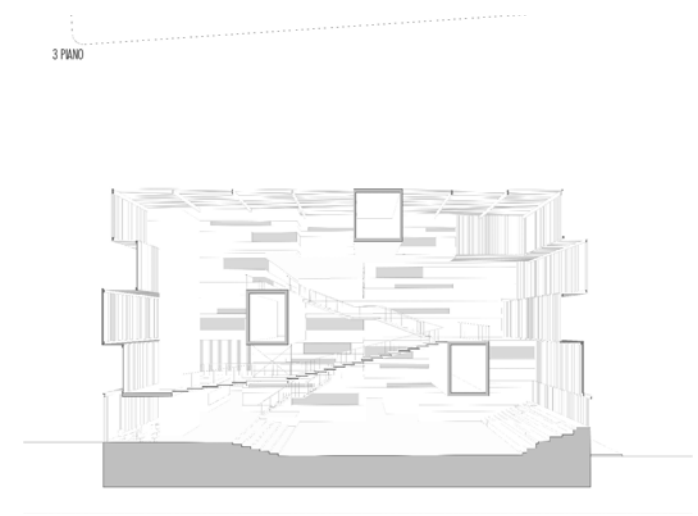
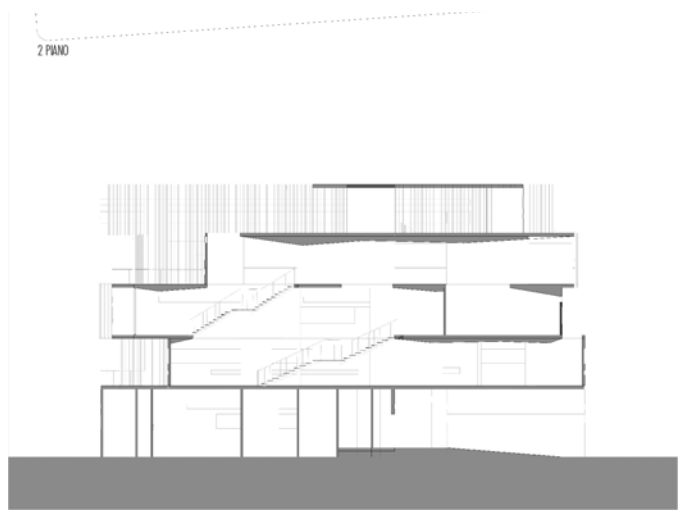
5 PIANO

04\_combinazione di linee  
Miguel Angel Millan\_12-13

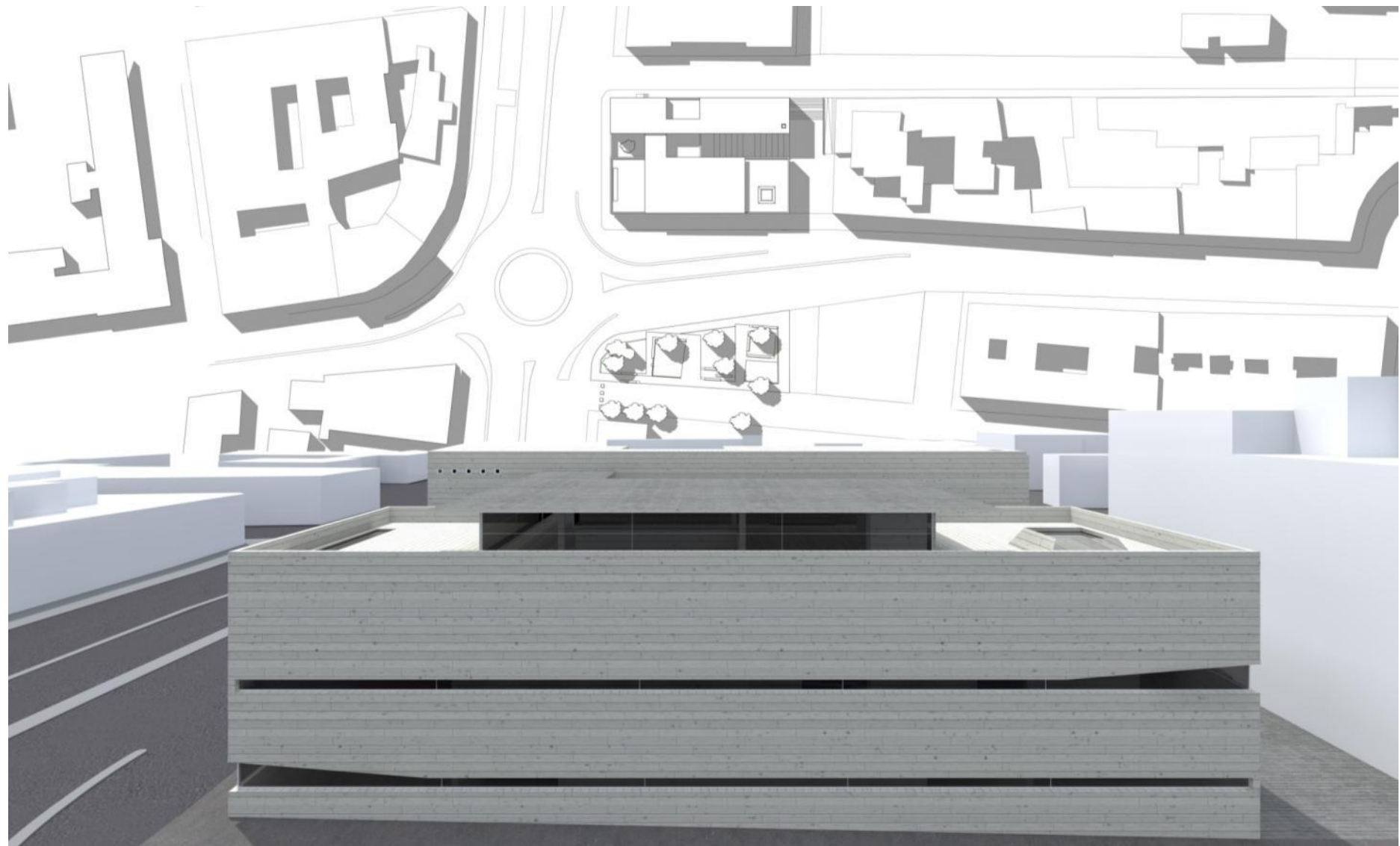


# 04\_combinazione di linee

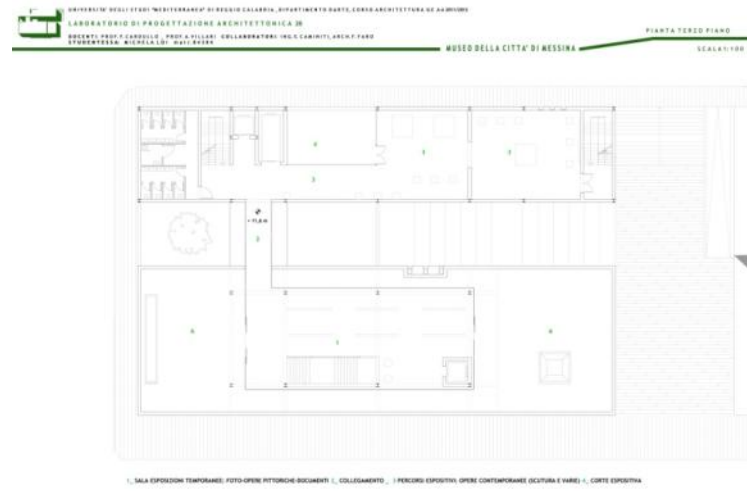
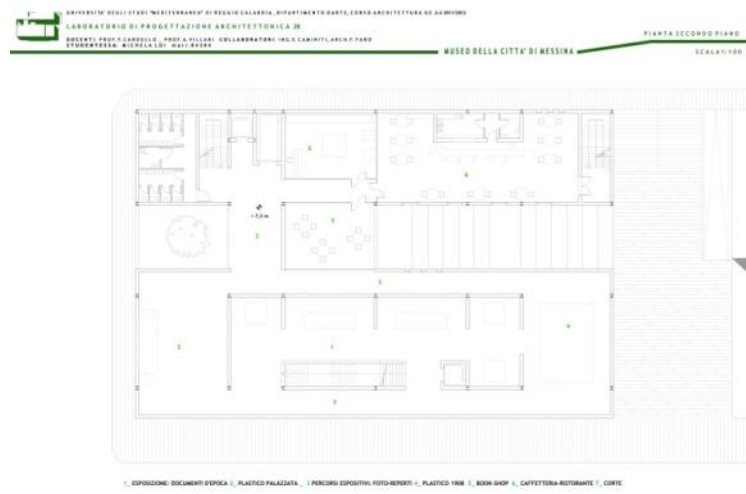
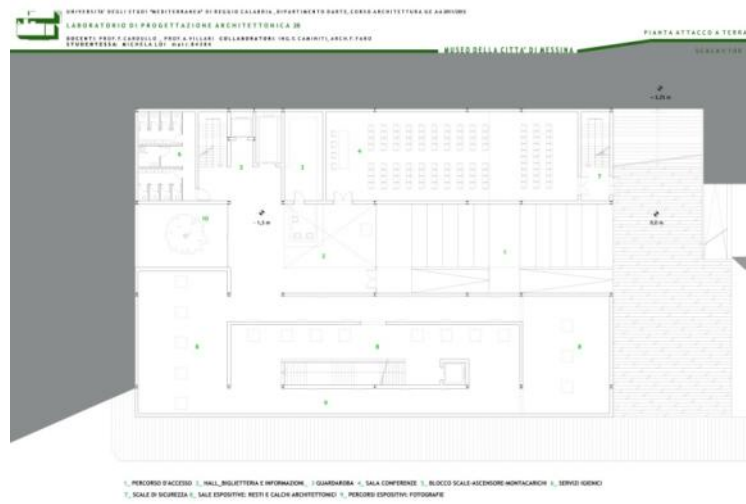
Miguel Angel Millan\_12-13



04\_combinazione di linee  
Michela Loi\_12-13

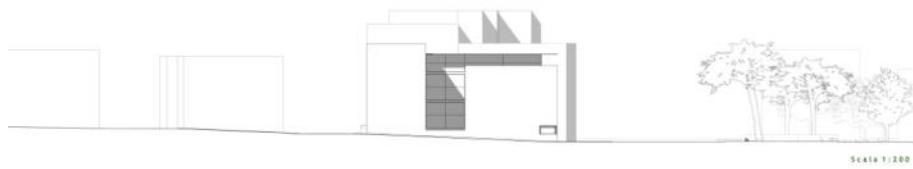
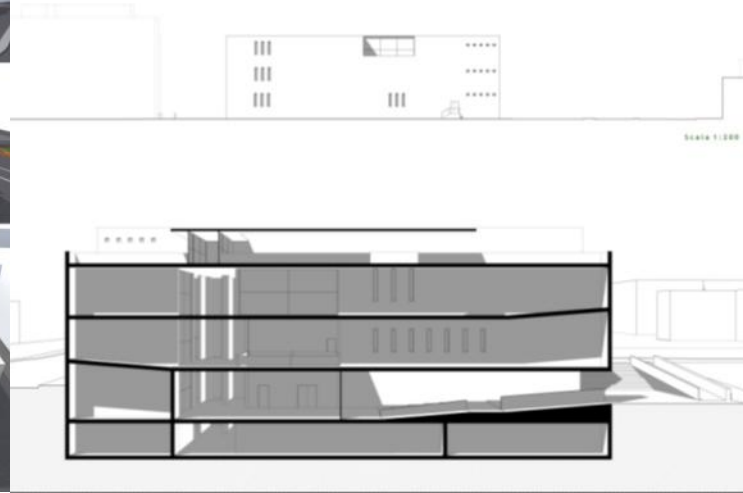
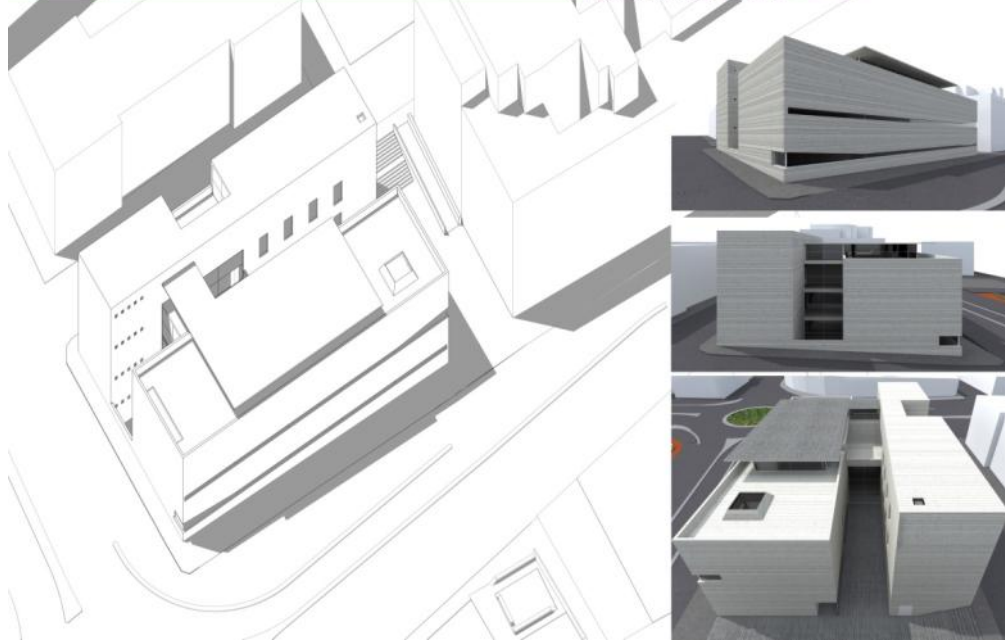


# 04\_combinazione di linee Michela Loi\_12-13

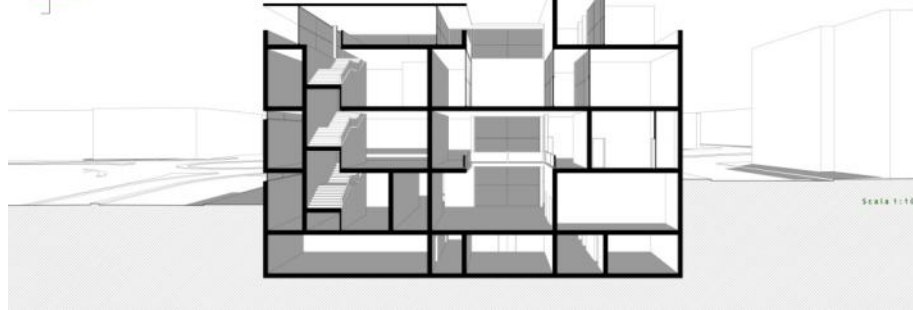
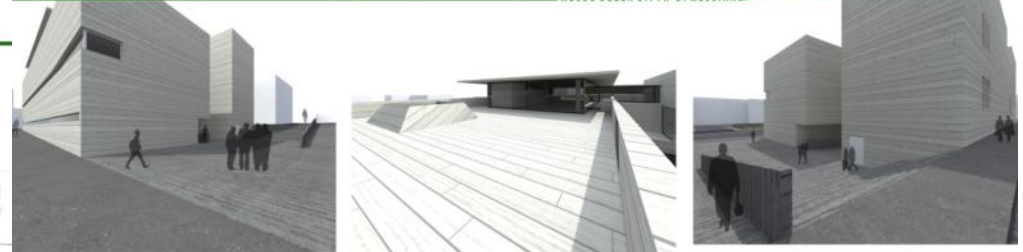




# 04\_ combinazione di linee Michela Loi\_12-13



SCALA 1:200

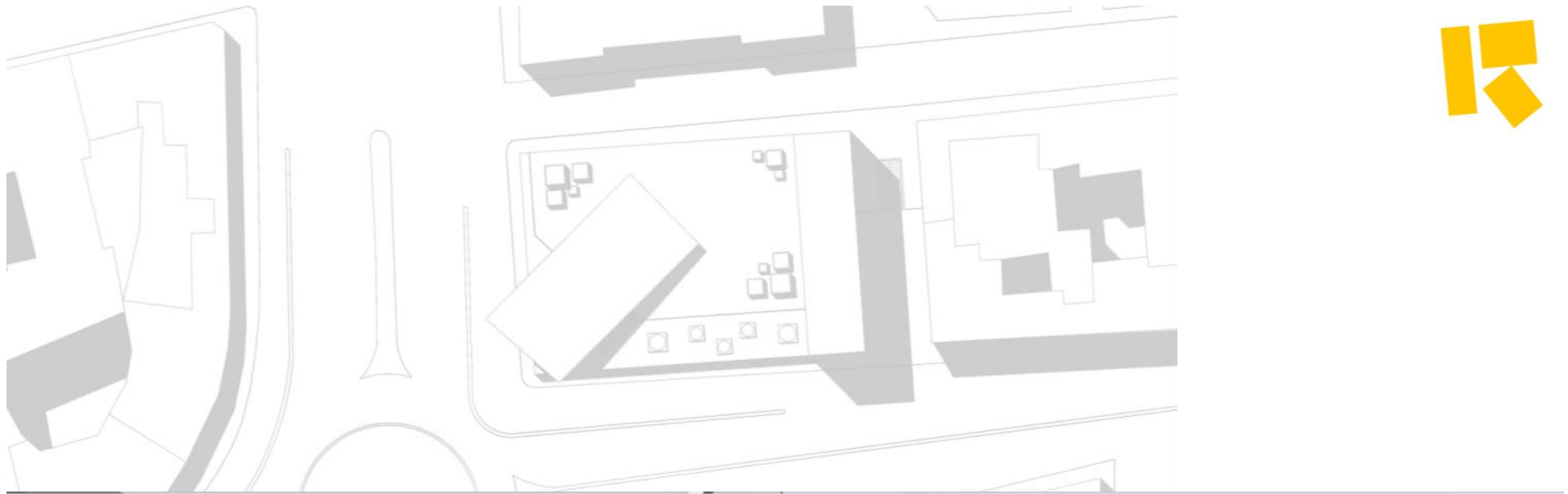


SCALA 1:100



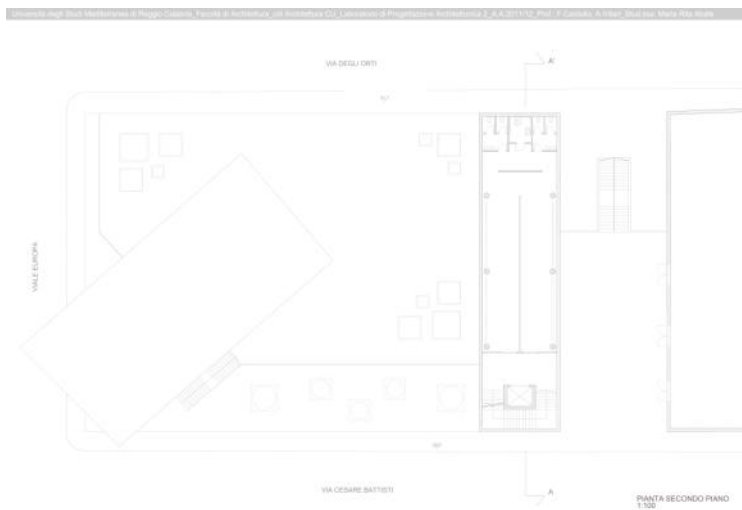
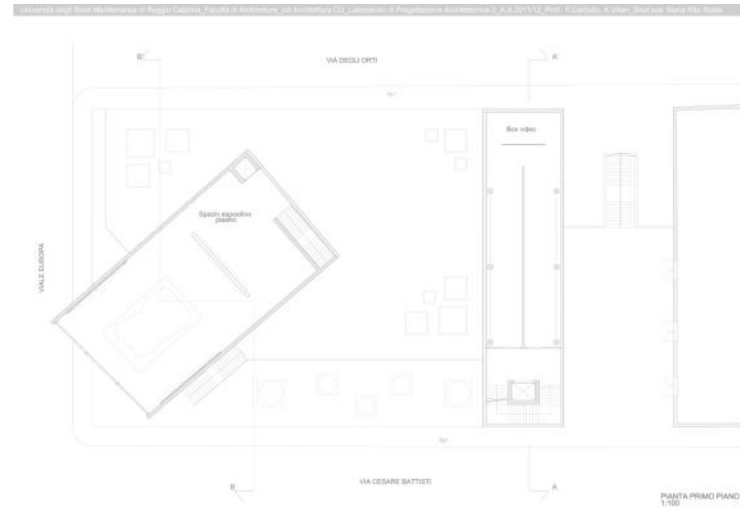


05\_aggregazione di volumi  
Maria Rita Abate\_11-12



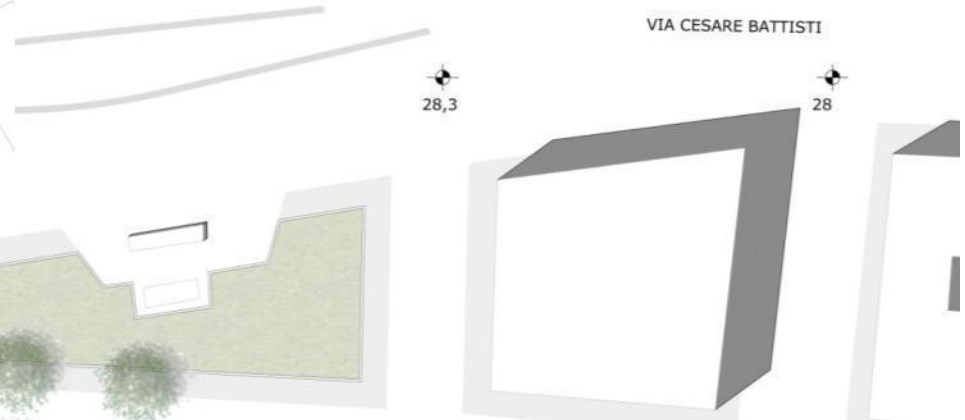
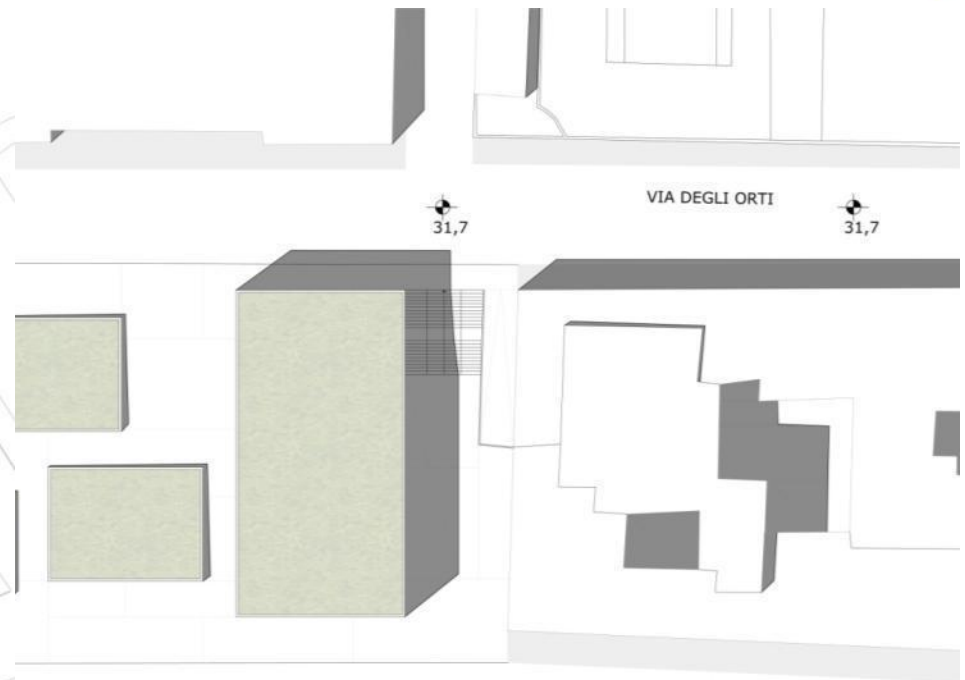
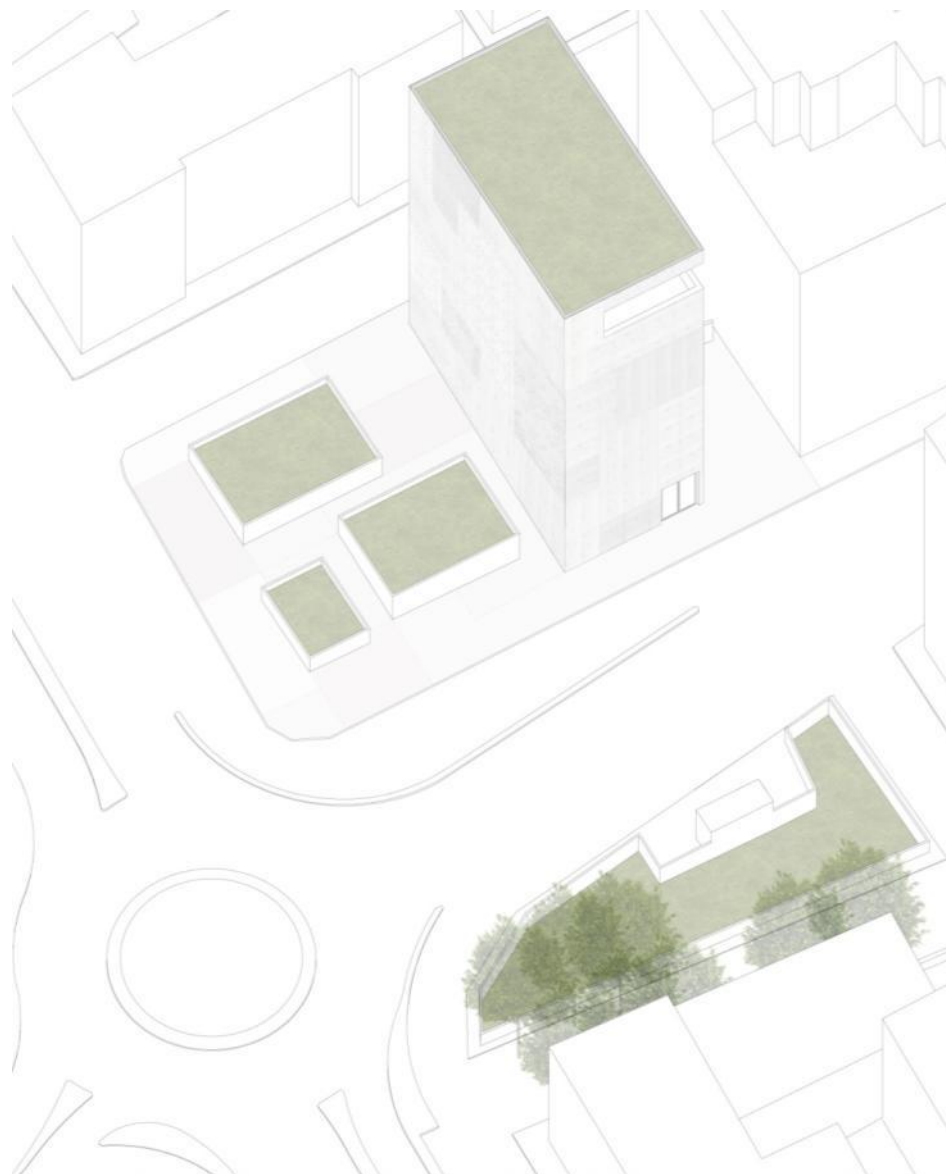
# 05\_aggregazione di volumi

Maria Rita Abate\_11-12



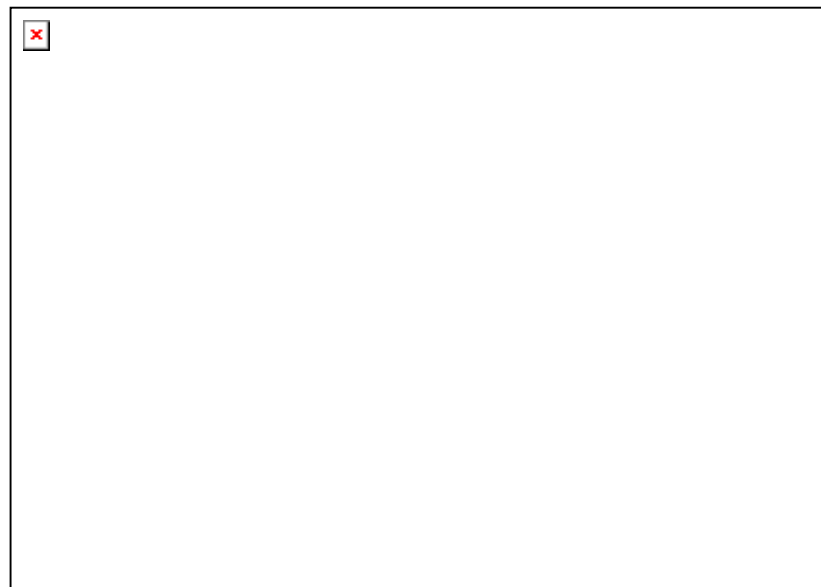
# 05\_aggregazione di volumi

Claudia Martelli\_12-13



# 05\_aggregazione di volumi

Claudia Martelli\_12-13



IL MUSEO DELLA CITTÀ DI MESSINA



# 05\_aggregazione di volumi

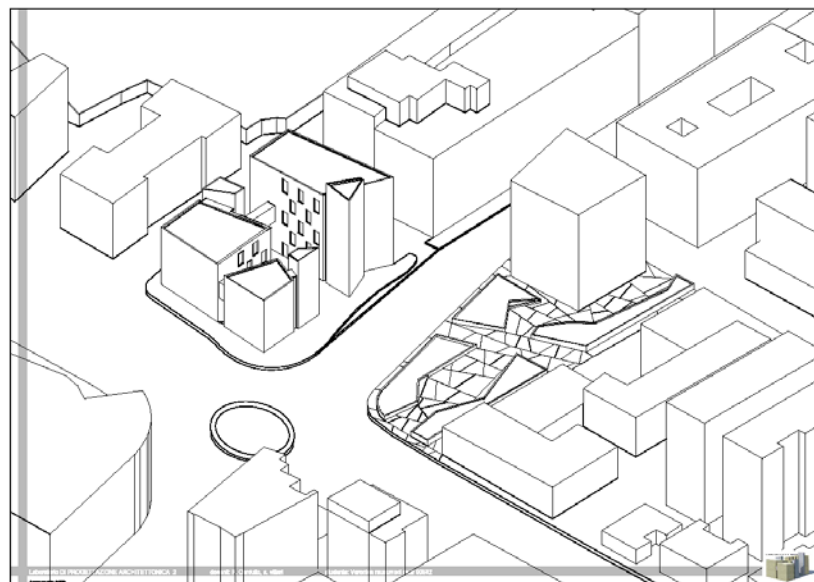
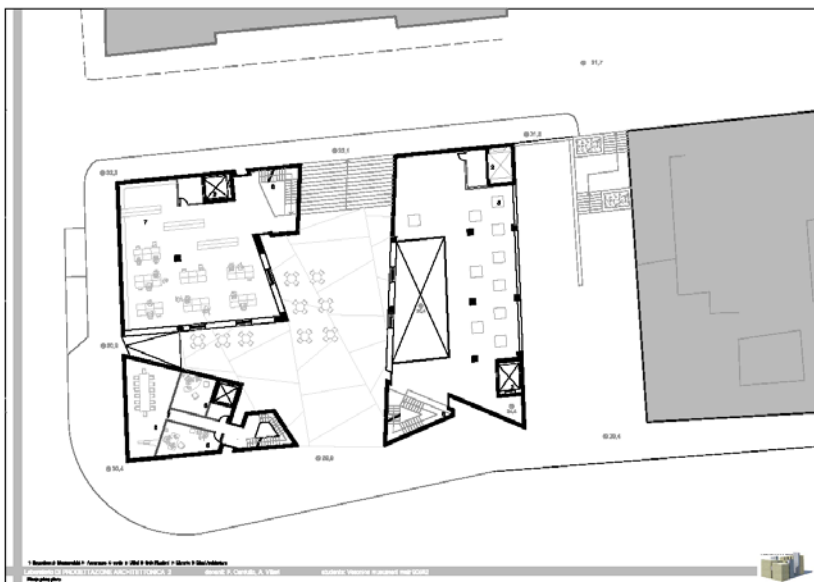
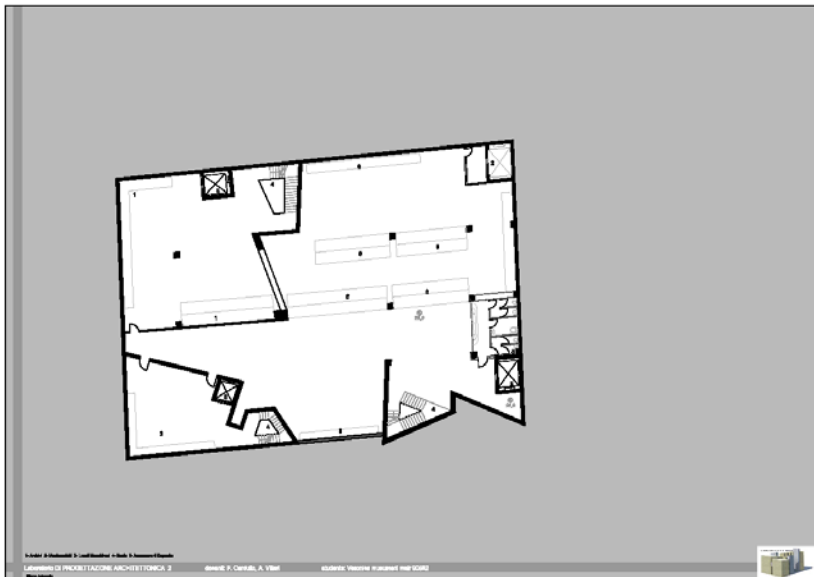
Veronica Musumeci\_12-13





# 05\_aggregazione di volumi

Veronica Musumeci\_12-13



# 05\_aggregazione di volumi

Veronica Musumeci\_12-13

