

Dipartimento Architettura e Territorio  
Corso di laurea in Design – L4  
A.A. 2024\_25



**CORSO DI:**  
**Metodologie e Tecniche di Design**  
Prof. A. De Capua

**MtD 9 SPAZIO CINEMA DESIGN**  
RIFERIMENTI SUGGERIZIONI PREFIGURAZIONI

MUSICA  
CINEMA ARTE  
DESIGN  
MODA ARCHITETTURA

## **RACCONTO**

Strumento di lettura e di ascolto.

Traduce stili di vita e di abitare.

Costruisce ambientazioni.

Definisce un'estetica.

Comunica attraverso lo spazio.

Caratterizza con il design.

Prefigura il futuro.

## **NARRATIVA**

**ESTETICA | AMBIENTAZIONI | PERSONAGGI**







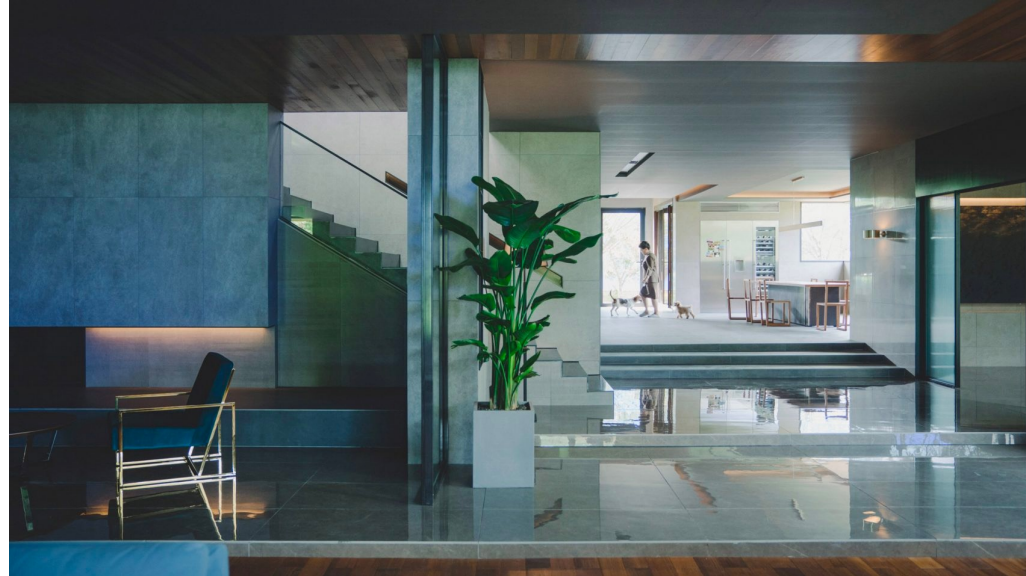
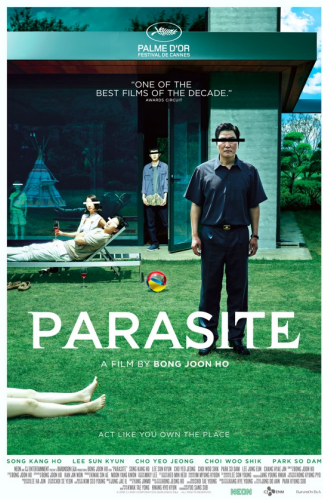


Maki Aste Lizamaide















# THE ROYAL TENENBAUMS

*Cordially request the  
pleasure of your company  
at home  
11 Tinsley Street*







**WORK CENTER**



**LIBRARY OF PLAYS**



**COLLECTION OF CARS**





THE  
GRAND BUDAPEST HOTEL

RALPH FIENNES  
M. Gable  
F. MURRAY ABRAHAM  
M. Gable  
MATHIEU AMALRIC  
M. Gable  
ADRIEN BRODY  
M. Gable  
WILLEM DAFOE  
M. Gable  
JEFF GOLDBLUM  
K. Gable  
JUDE LAW  
M. Gable  
HARVEY KEITEL  
M. Gable  
BILL MURRAY  
M. Gable  
EDWARD NORTON  
M. Gable  
SAOIRSE RONAN  
M. Gable  
LÉA SEYDOUX  
M. Gable  
JASON SCHWARTZMAN  
M. Gable  
TILDA SWINTON  
M. Gable  
TOM WILKINSON  
M. Gable  
OWEN WILSON  
M. Gable  
Introducing  
TONY REVOLORI  
M. Gable

in a film by  
WES ANDERSON  
FOX SEARCHLIGHT PICTURES in Association with INDIAN PAINTBRUSH and STUDIO BABELSBERG Present an AMERICAN EMPIRICAL PICTURE "THE GRAND BUDAPEST HOTEL" U.S. Casting by DOUGLAS AIBEL U.K. Casting by JINA JAY  
Costume Designer MILENA CANONERO Original Music by ALEXANDRE DESPLAT Music Supervisor RANDALL POSTER Editor BARNEY PILLING Production Designer ADAM STOCKHAUSEN Director of Photography ROBERT YEOMAN, A.S.C.  
Co-Producer JANE FRAZER Executive Producers MOLLY COOPER CARL WOEBCCKEN CHRISTOPH FISHER BENNING MÖLLENBERG Produced by WES ANDERSON SCOTT RUDIN STEVEN RALES JEREMY DAWSON Story by WES ANDERSON & HUGO GUINNESS  
Screenplay by WES ANDERSON 2014 Directed by WES ANDERSON  
GRANDBUDAPESTHOTEL.COM





**ISPIRAZIONI**



**Scalamandre zebra cushion / pillow cover as seen in *The Royal Tenenbaums***

As seen in:  
[The Royal Tenenbaums](#)

Director: [Wes Anderson](#)

This cushion/pillow cover is made in a variety of sizes and colours using Scalamandre zebra fabric – the iconic design which is seen in wallpaper form in *The Royal Tenenbaums*.

Approx £40.00 / \$52

[SHOP NOW](#)



**Zebra wallpaper as seen in *The Royal Tenenbaums***

As seen in:  
[The Royal Tenenbaums](#)

Director: [Wes Anderson](#)

This zebra wallpaper pattern influenced by the classic design seen in *The Royal Tenenbaums* is available as a custom printed wallpaper to any size and a variety of finishes.

[SHOP NOW](#)



**Scalamandre zebra 'Wallskin' as seen in *The Royal Tenenbaums***

As seen in:  
[The Royal Tenenbaums](#)

Director: [Wes Anderson](#)

Margot Tenenbaum's bedroom in Wes Anderson's cult classic *The Royal Tenenbaums* features the iconic zebra design wallpaper by Scalamandre, the decorative textiles and American heritage design house.

Approx £38.00 / \$49

[SHOP NOW](#)



**Zebra 'The Royal Tenenbaums' cushion / throw pillow**

As seen in:  
[The Royal Tenenbaums](#)

Director: [Wes Anderson](#)

This cushion / pillow throw features the iconic zebra design which is seen in wallpaper form in *The Royal Tenenbaums*.

Approx £22.00 / \$28

[SHOP NOW](#)



**Zebra 'The Royal Tenenbaums' bar stool**

As seen in:  
[The Royal Tenenbaums](#)

Director: [Wes Anderson](#)

This stool features the iconic zebra design which is seen in wallpaper form in *The Royal Tenenbaums*.

Approx £155.00 / \$203

[SHOP NOW](#)



**Zebra 'The Royal Tenenbaums' shower curtain**

As seen in:  
[The Royal Tenenbaums](#)

Director: [Wes Anderson](#)

This shower curtain features the iconic zebra design which is seen in wallpaper form in *The Royal Tenenbaums*.

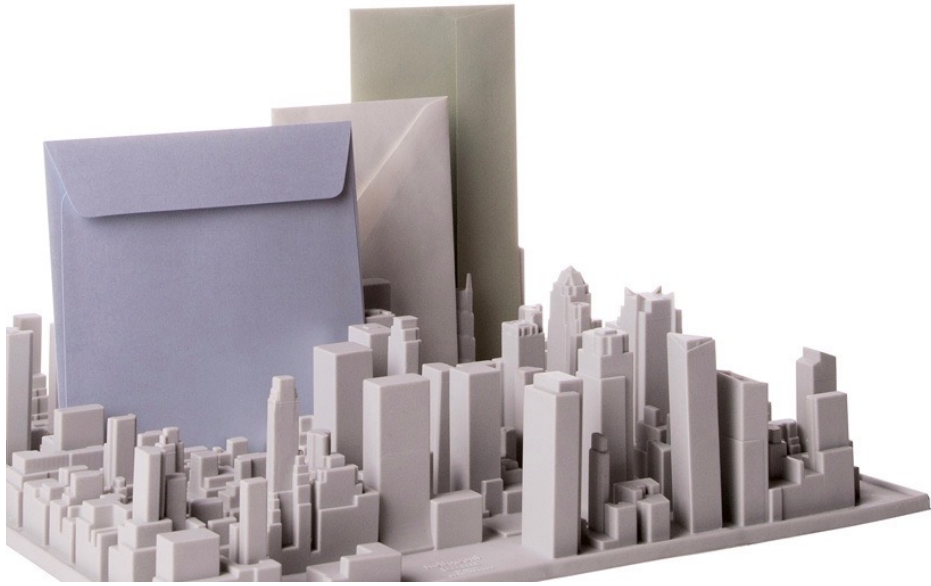
Approx £43.00 / \$56

[SHOP NOW](#)



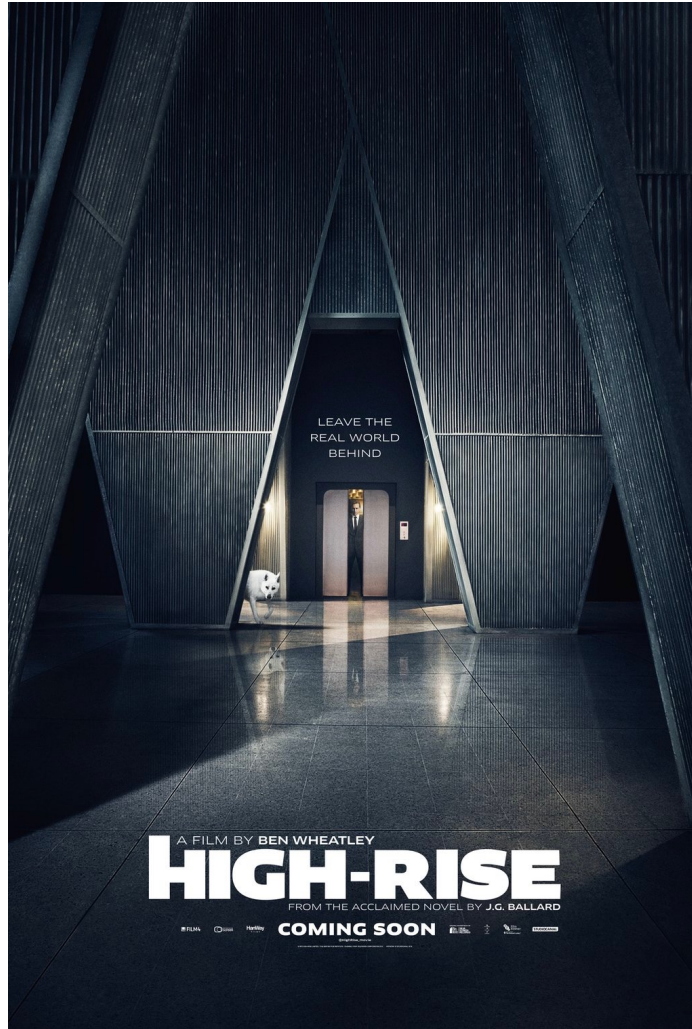


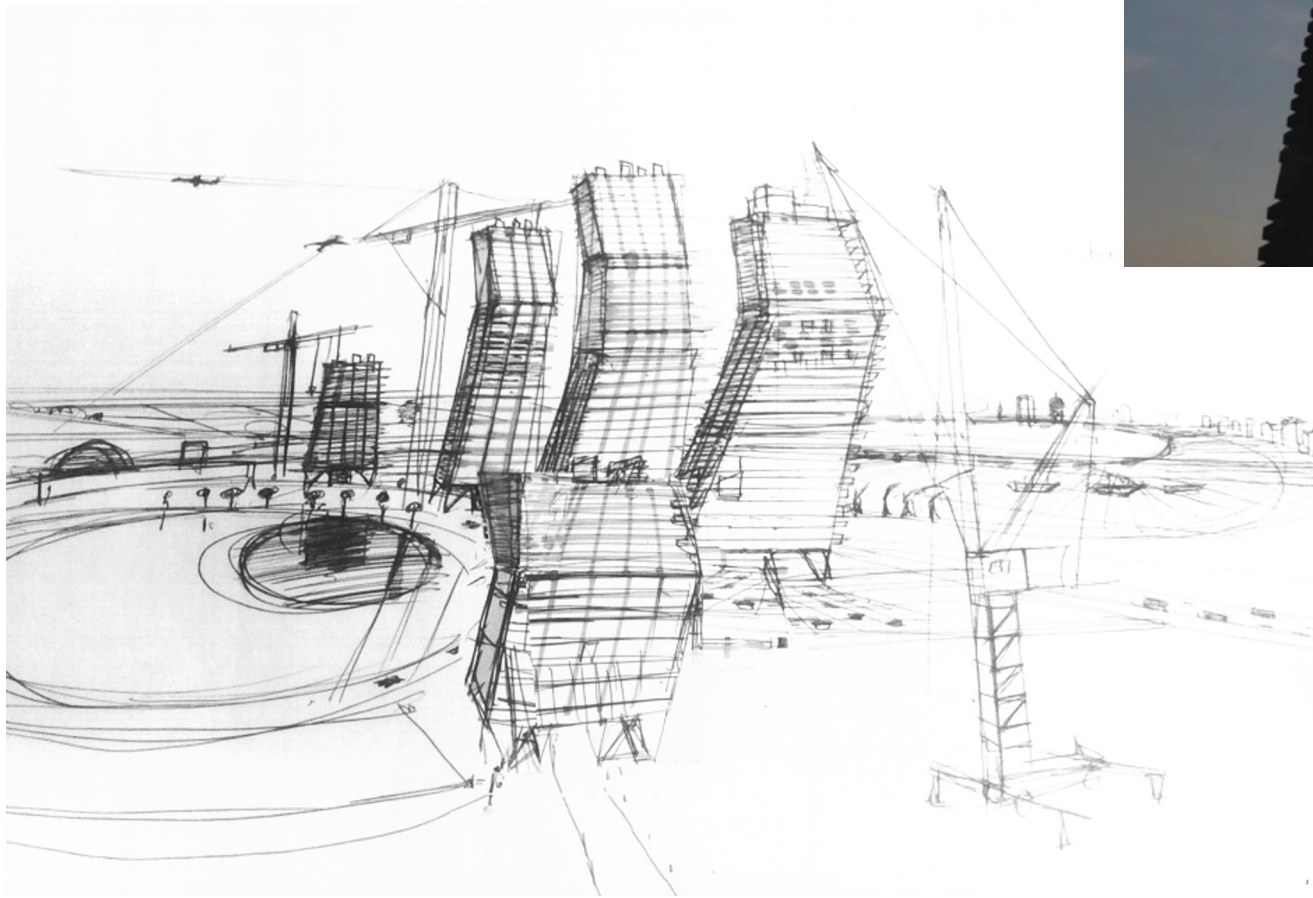




# **CITAZIONI**



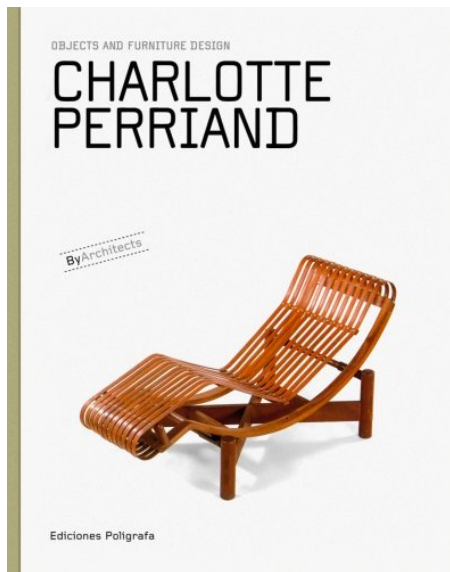














Vitra Eames Plastic Side Chair DSS













































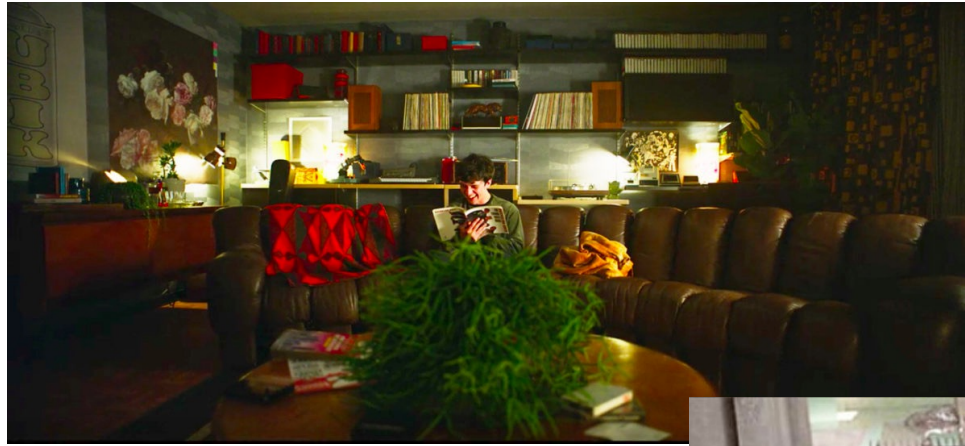








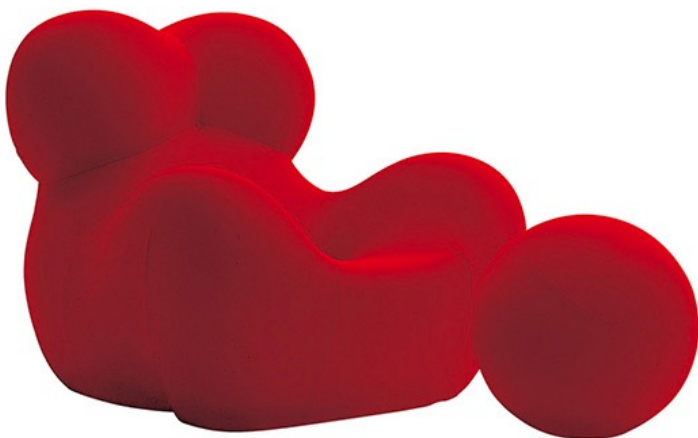










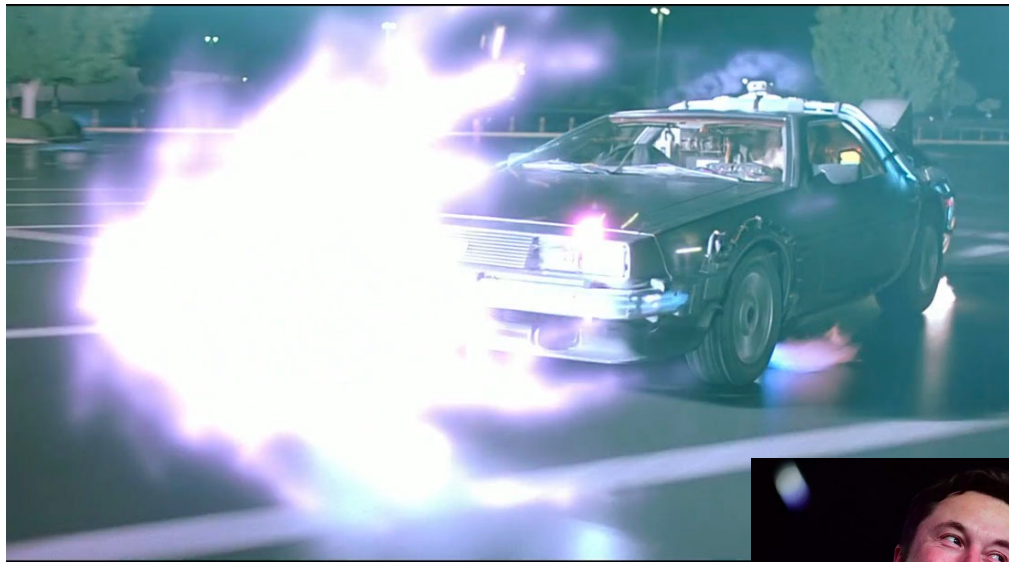




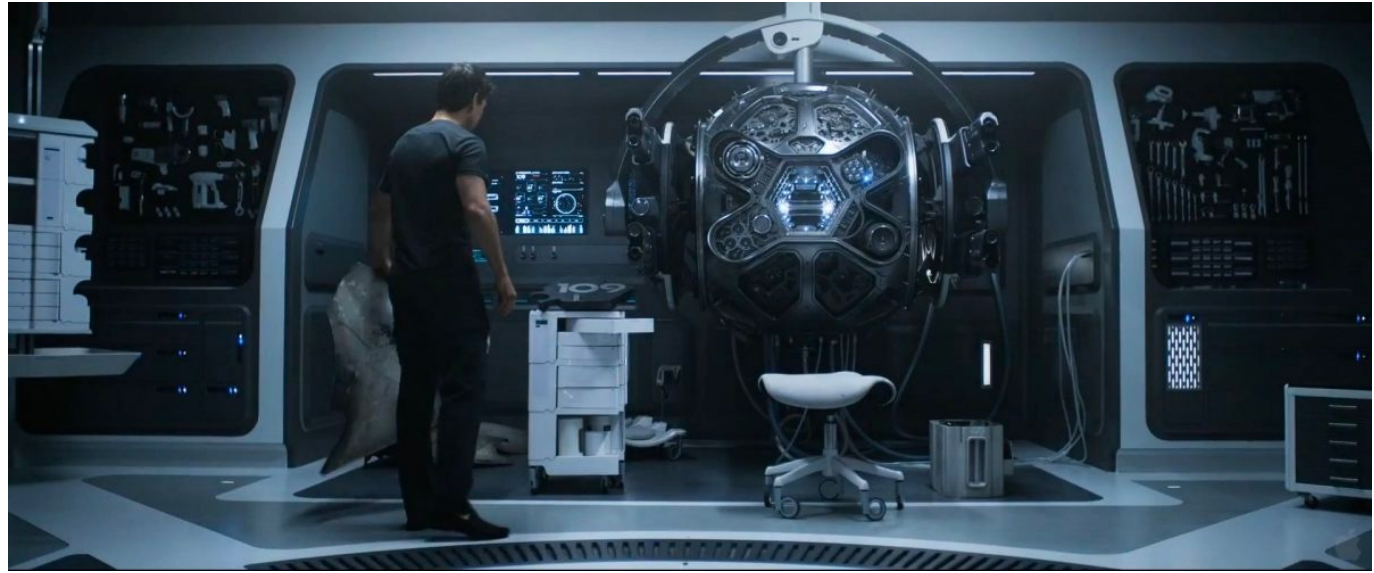


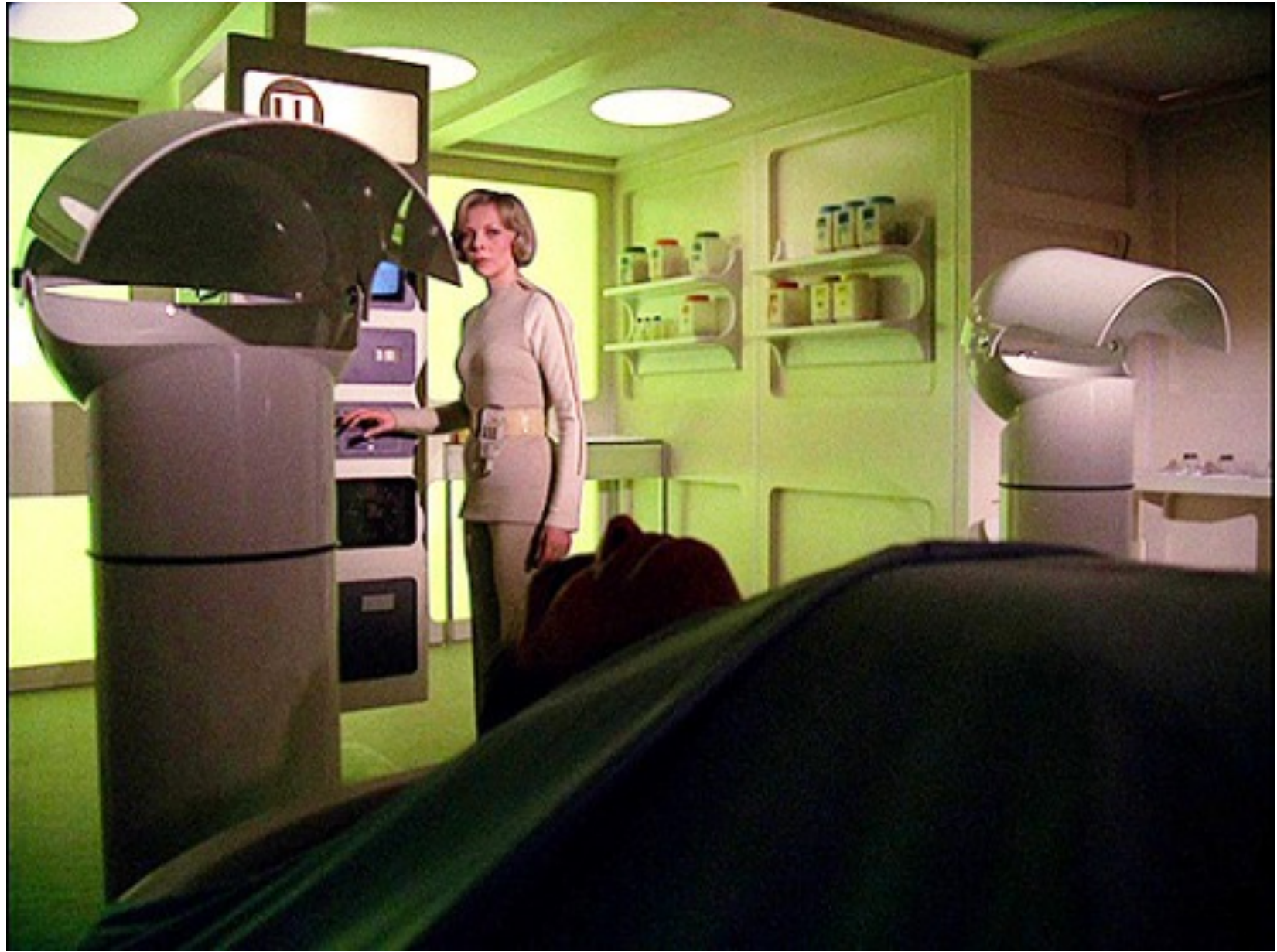
# **PREFIGURAZIONI**



















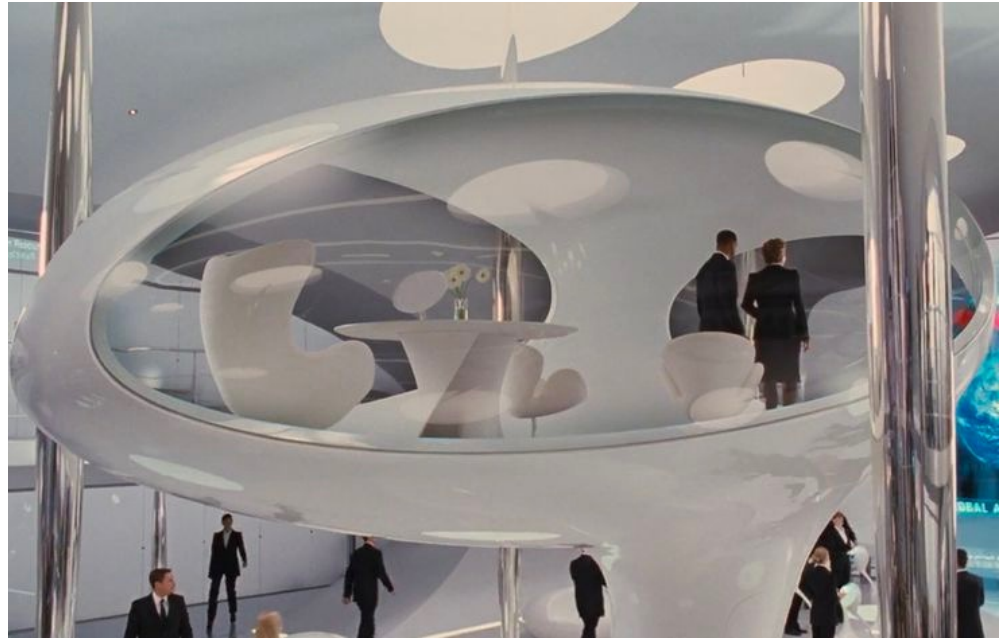




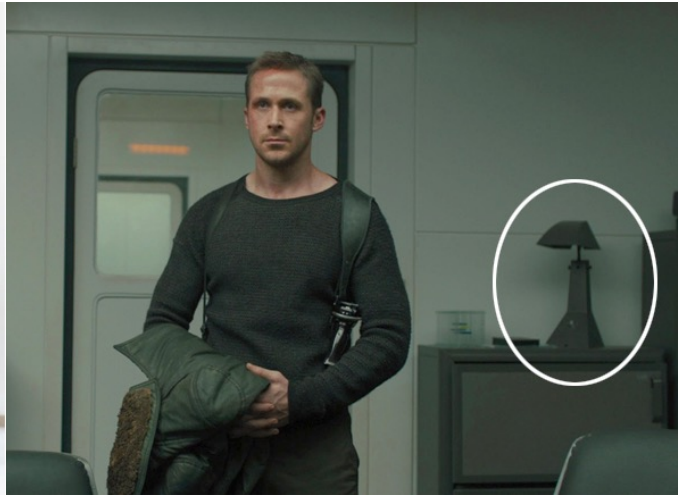




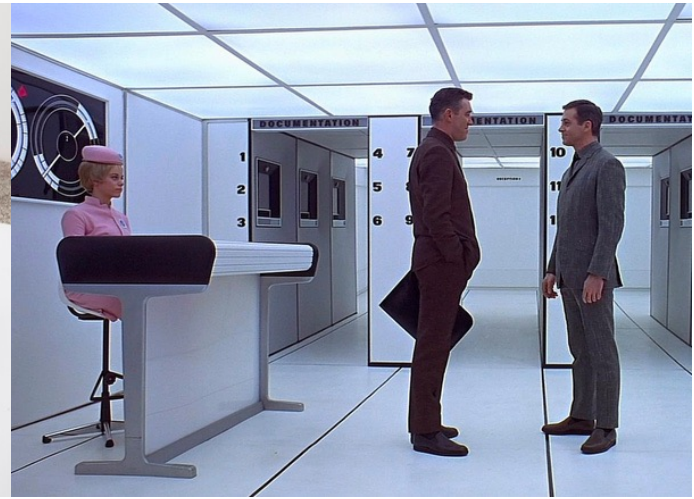








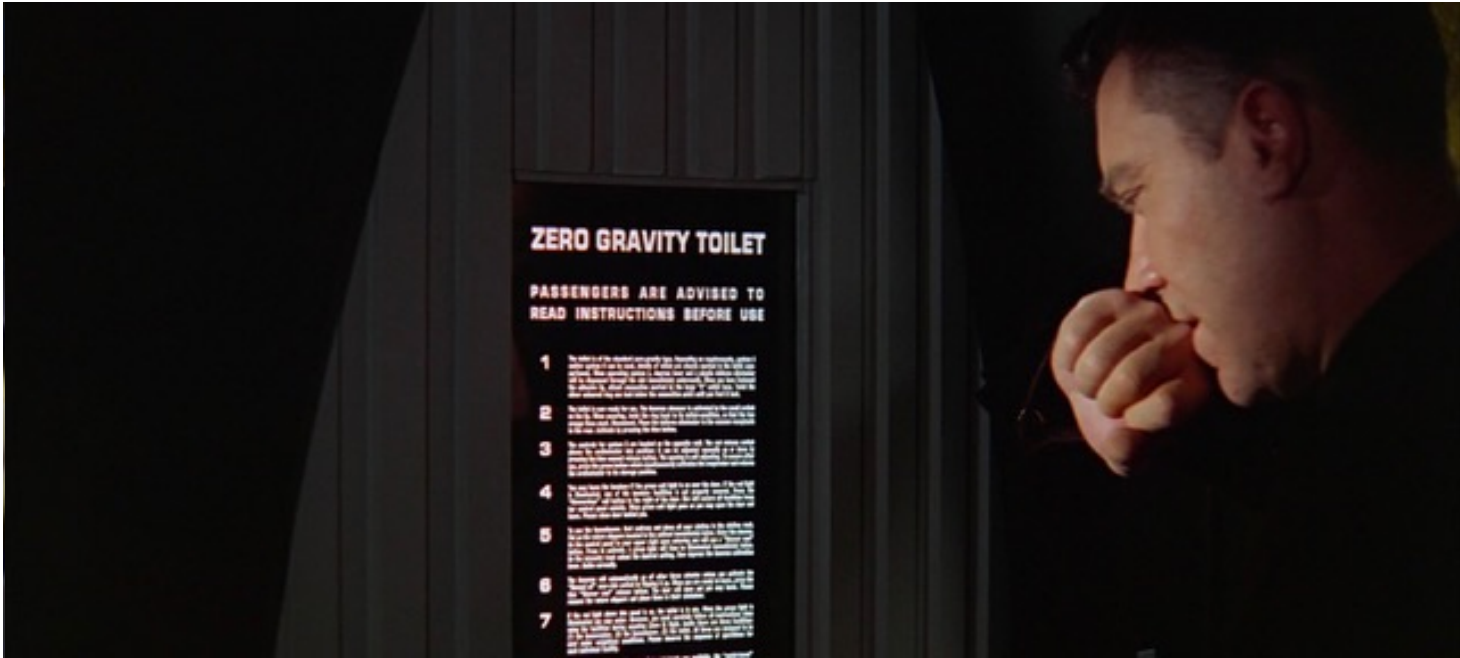












### ZERO GRAVITY TOILET

PASSENGERS ARE ADVISED TO READ INSTRUCTIONS BEFORE USE

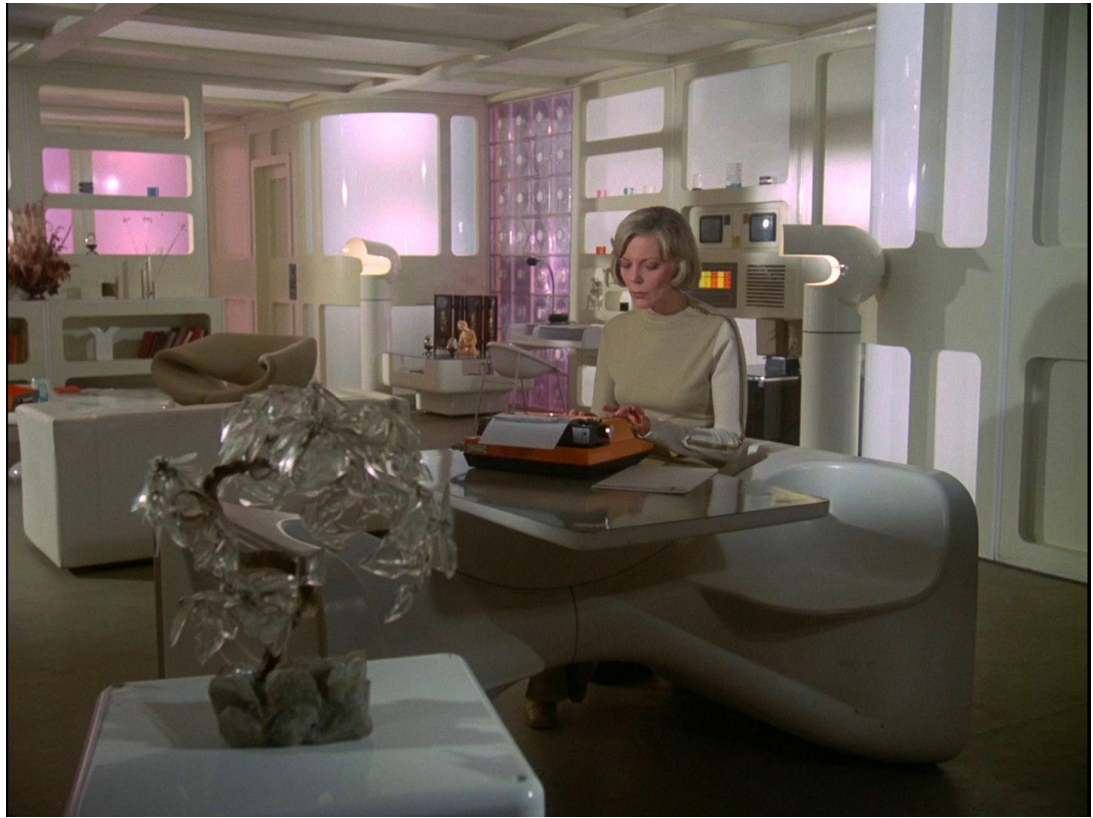
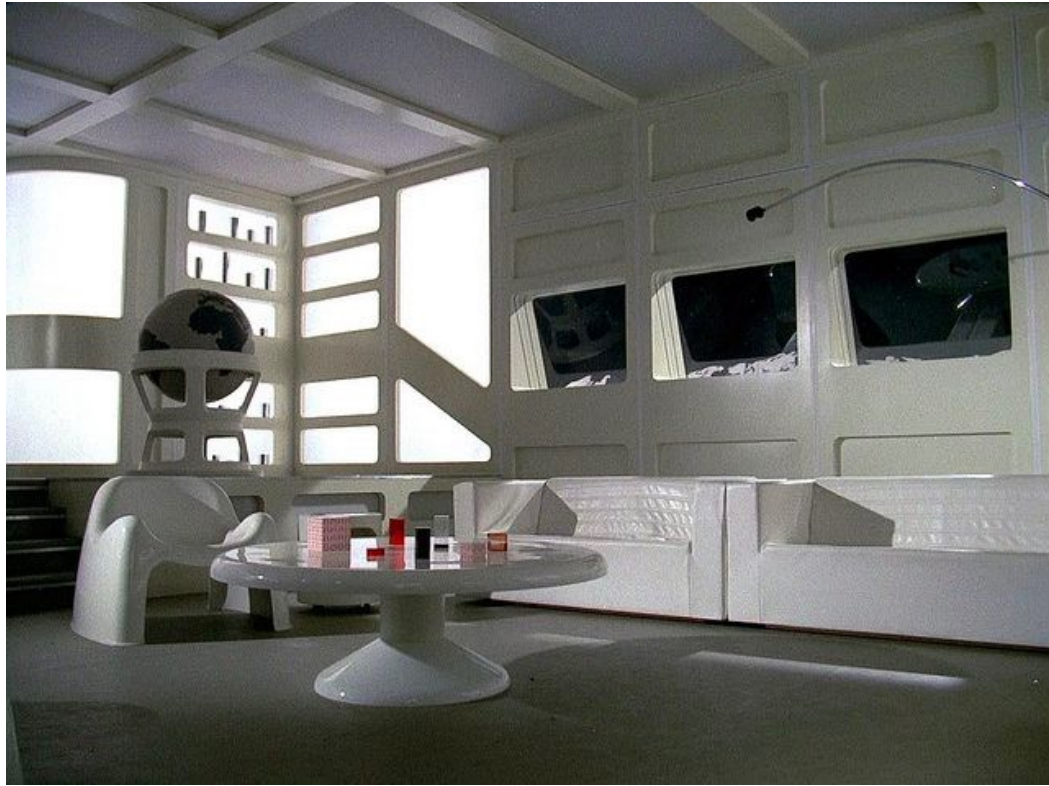
1. The purpose of this instruction is to ensure that passengers are properly trained in the use of the zero gravity toilet. This instruction is intended to provide passengers with the necessary information to use the toilet safely and effectively. Passengers should read this instruction carefully and follow the instructions to the letter. Failure to do so may result in injury or damage to the aircraft.
2. The toilet is used only for the purpose of relieving oneself. It is not to be used for any other purpose. Passengers should use the toilet only when the aircraft is in a level attitude and the cabin is pressurized. Passengers should not use the toilet during takeoff, landing, or any other time when the aircraft is not in a level attitude.
3. The toilet is located in the forward cabin of the aircraft. Passengers should use the toilet only when the aircraft is in a level attitude and the cabin is pressurized. Passengers should not use the toilet during takeoff, landing, or any other time when the aircraft is not in a level attitude.
4. The toilet is used by pulling down on the seat. Passengers should use the toilet only when the aircraft is in a level attitude and the cabin is pressurized. Passengers should not use the toilet during takeoff, landing, or any other time when the aircraft is not in a level attitude.
5. Passengers should use the toilet only when the aircraft is in a level attitude and the cabin is pressurized. Passengers should not use the toilet during takeoff, landing, or any other time when the aircraft is not in a level attitude.
6. The toilet is used by pulling down on the seat. Passengers should use the toilet only when the aircraft is in a level attitude and the cabin is pressurized. Passengers should not use the toilet during takeoff, landing, or any other time when the aircraft is not in a level attitude.
7. Passengers should use the toilet only when the aircraft is in a level attitude and the cabin is pressurized. Passengers should not use the toilet during takeoff, landing, or any other time when the aircraft is not in a level attitude.

# **LO SPAZIO NELLO SPAZIO**







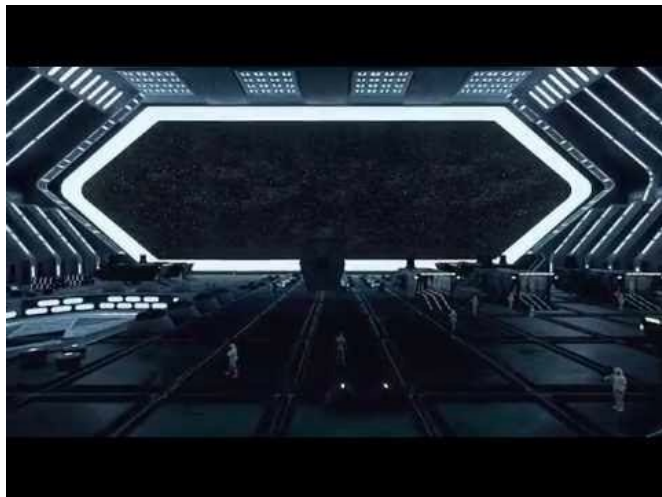








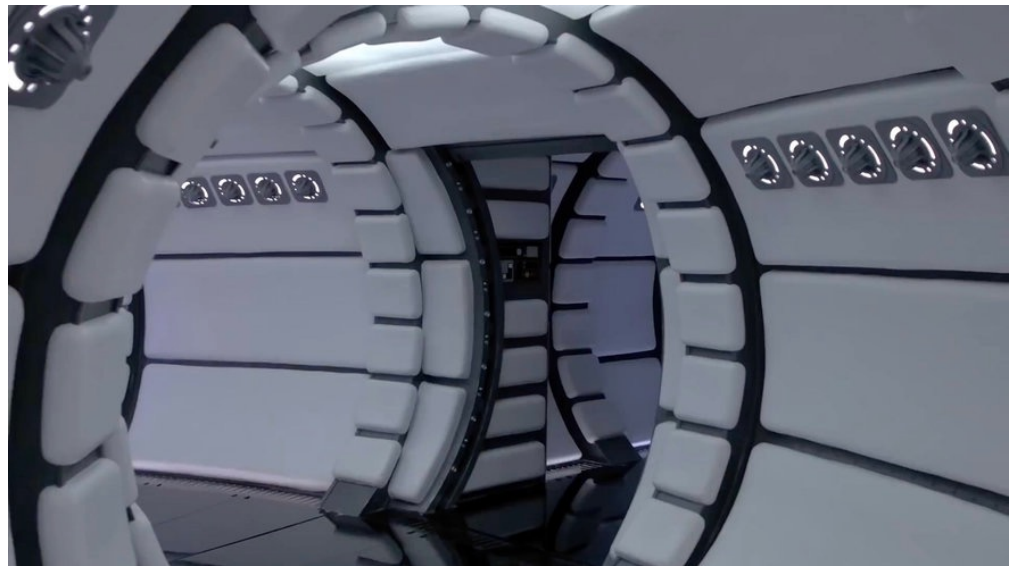
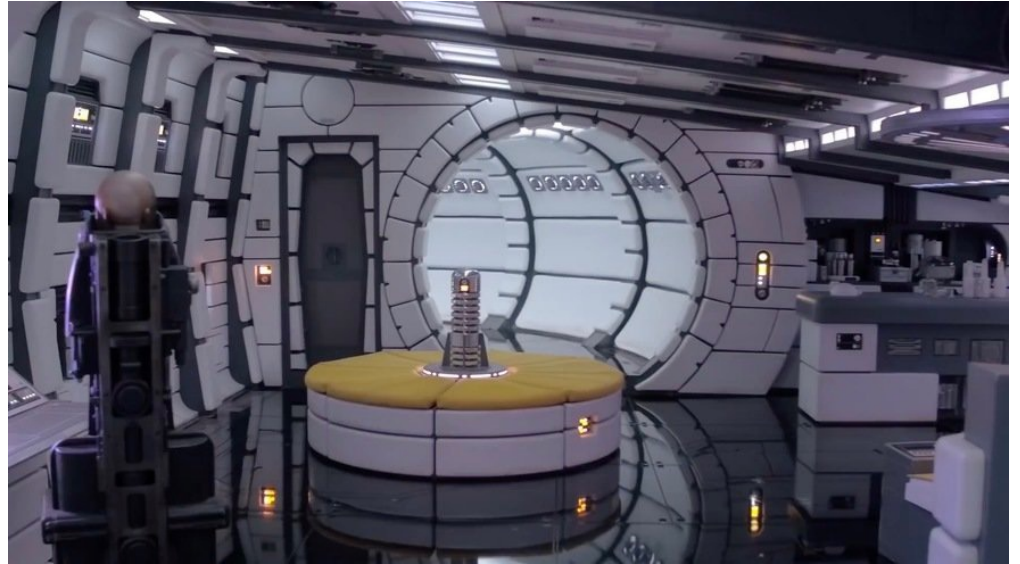






STAR WARS  
THE OLD REPUBLIC

© 2010 Lucasfilm Entertainment Company or Lucasfilm Ltd. All rights reserved.

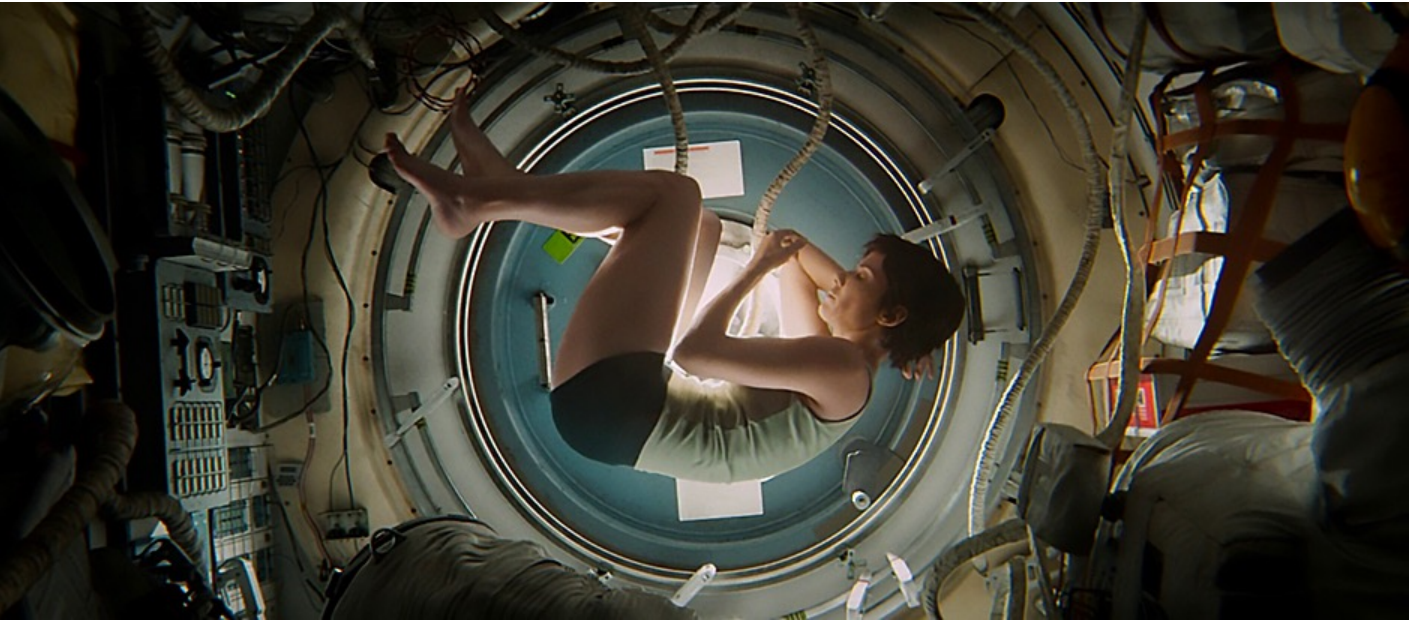




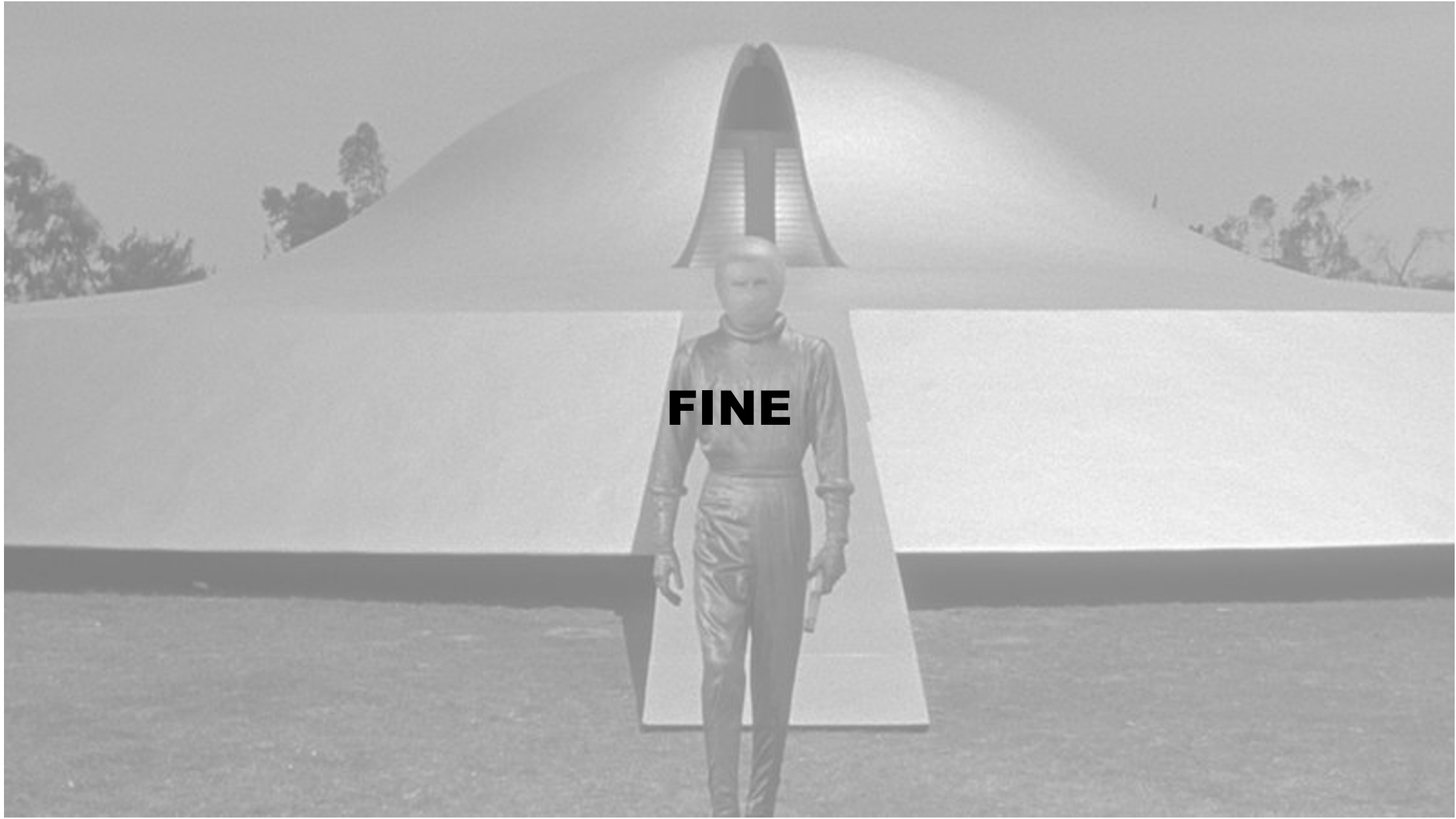












**FINE**