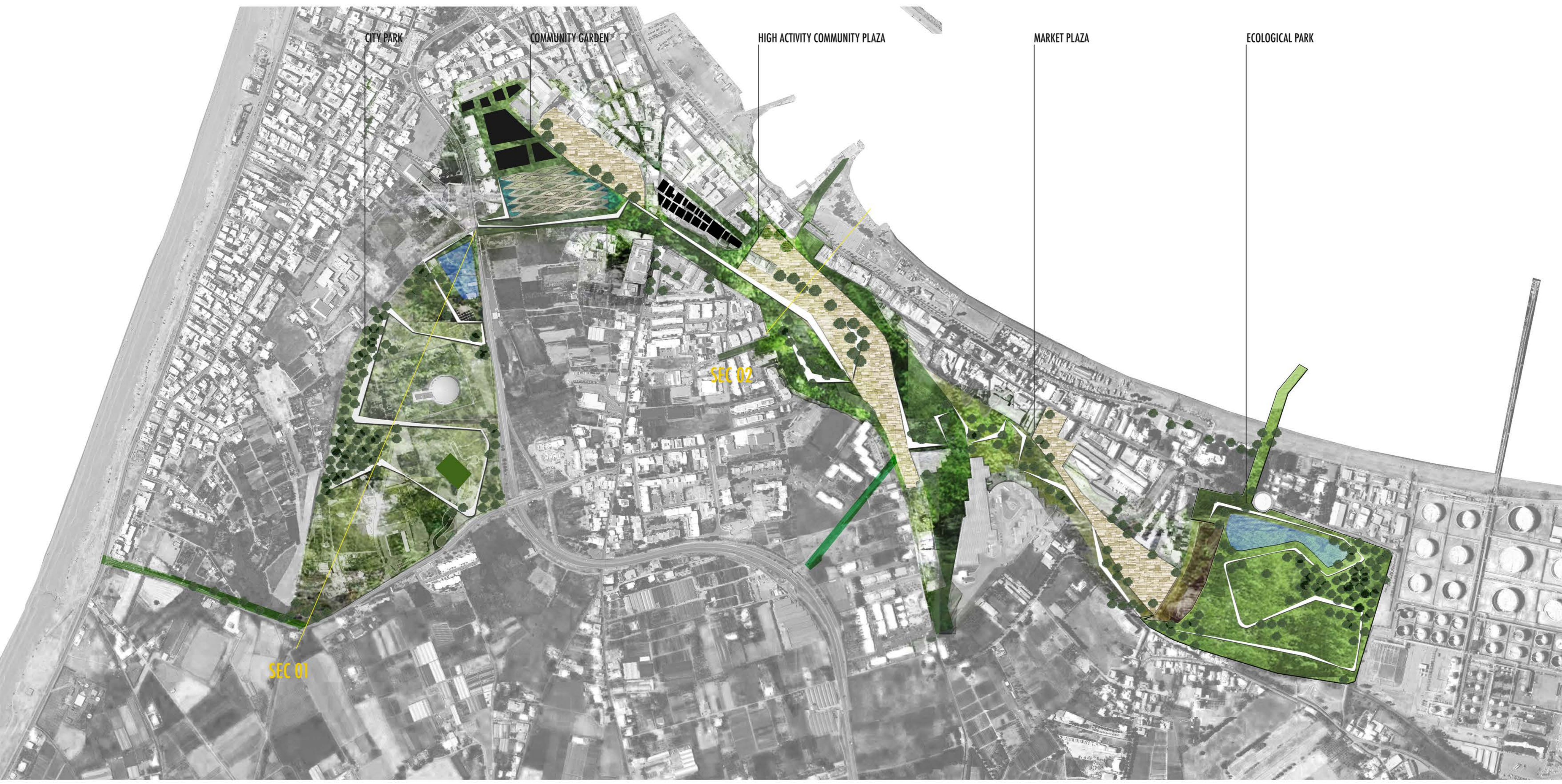
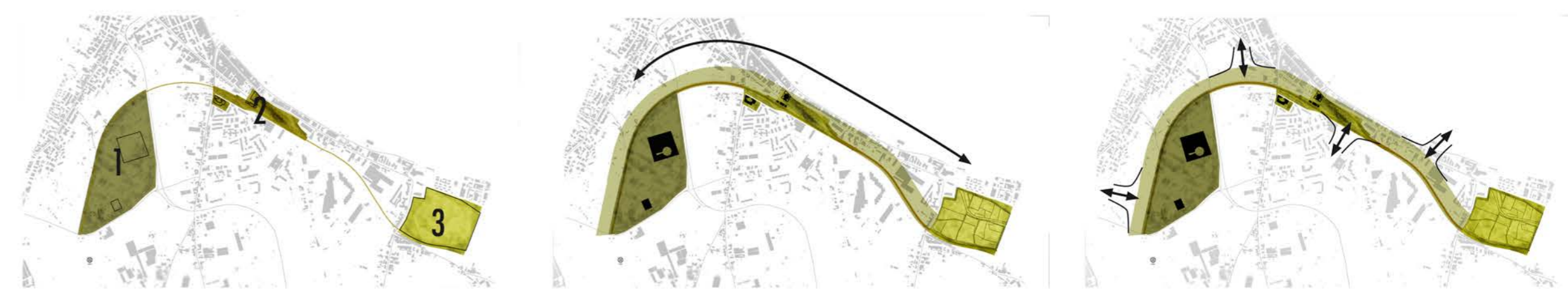
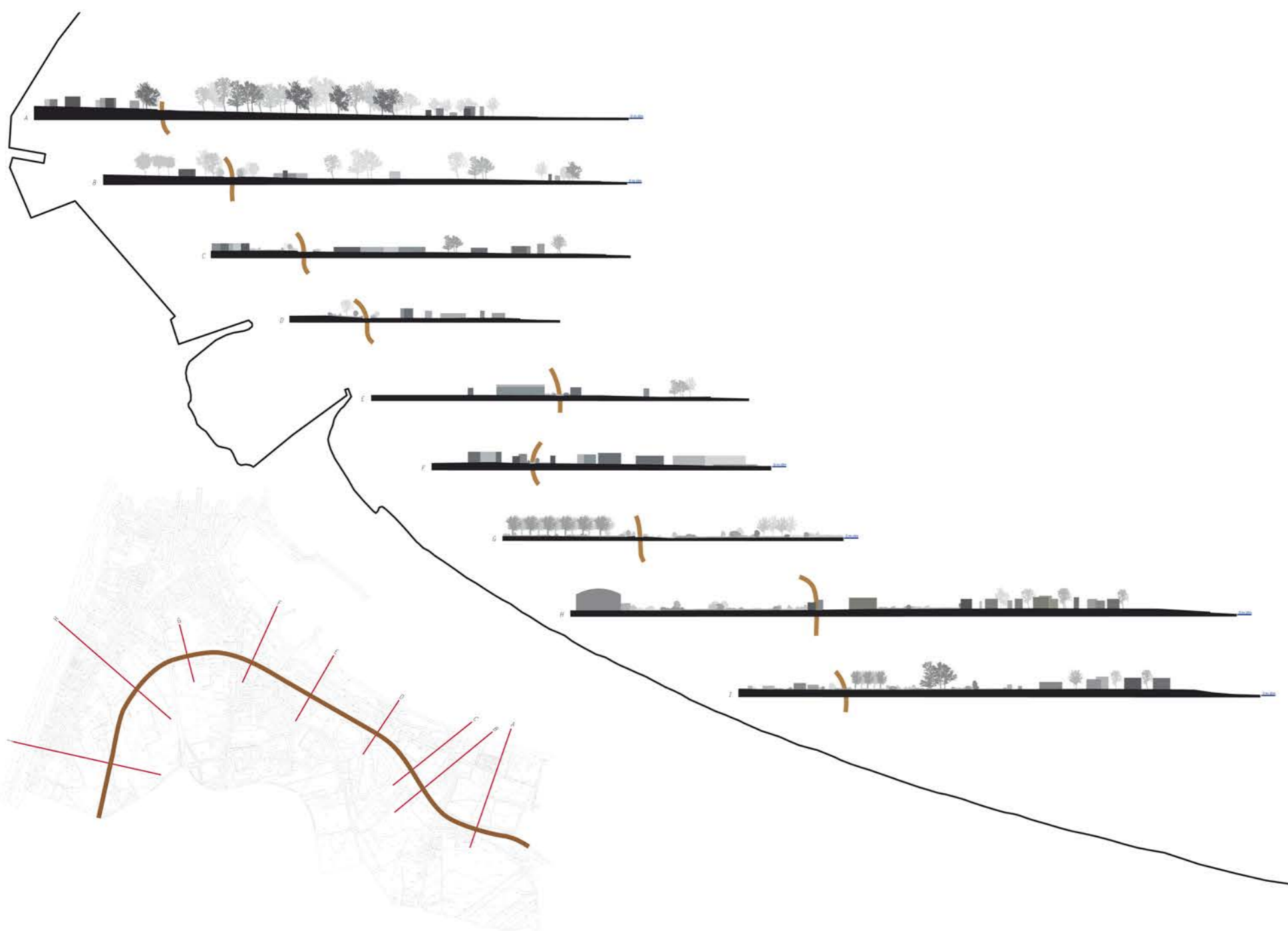


## THE SPINE





**New Housing**

Infill Development To Create Denser Neighborhoods

**Gathering and Intimate Spaces**

Variety Of Spaces For Different Users, From Large Community Gathering Points To Intimate Secret Gardens

**Paths, Ramps and Accessible Bridges**

Circulations That Connects All Parts Of The Project For All Kinds Of Users With Varying Methods To Provide Full Accessibility

**Vegetated Areas**

Maintaining Existing Vegetation And Introducing Native Flora For Ecological Renewal And Habitats

**Low Traffic Ecological Habitats**

Areas Of Low Human Traffic Allows For An Organic Growth Of Native Ecosystems

**High Points and Water Flow**

Water Is Directed From Highlands To Low Lying Pools For Ecological Study And On Site Irrigation

**Private Development**

Distributed Sections Of The RR Development Are Under Private Ownership To Provide Private Accountability And Ecological Research

**Impact on Surrounding Development**

Proposals for the development of the surrounding industrial, waterfront and agricultural areas. Industrial areas for Commercial Development. Waterfront as Public Domain. Agriculture to be maintained and Municipally Supported.

**360 Degree View Terrace**



**Old Train Station Walk**



**Train Rail Tower and High Activity Center**



**Accessibility Strategies**

